

Brookfield Cemetery
Brookfield, Massachusetts

Preservation & Management Plan



Paysage

Landscape Architecture & Historic Preservation
313 Elm Street
Northampton, MA 01060

with

Agricola Corp.
Preservation-Conservation-Management
P. O. Box 861
Chicopee, Massachusetts 01014

and

Larry Lowenthal
Historian
6 John Haley Road
Brimfield, MA 01010



June 2002

*Sleep precious dust while here confined in Earth
Till the glad spring of nature's second Birth
Then quit the transient winter of the Tomb
And rise and flourish in immortal Bloom*

- from the stone of Lucy Williston, d. 1782,
interred at the Brookfield Cemetery

Brookfield Cemetery
Brookfield, Massachusetts

Preservation & Management Plan

prepared by:

Paysage

Landscape Architecture – Historic Preservation
313 Elm Street
Northampton, Massachusetts 01060
413-586-4178

with

Agricola Corp.
Preservation-Conservation-Management
P. O. Box 861
Chicopee, Massachusetts 01014
413-592-3875

and

Larry Lowenthal
Historian
6 John Haley Road
Brimfield, MA 01010
413-283-3605

June 2002

CONTENTS

Introduction	1
The Brookfield Cemetery Landscape in History	3
Landscape Assessment	7
Recommendations	15
Implementation	29
Appendices	
A: Engineering Assessment at the Brookfield Cemetery	33
B: Bibliography	43
C: National Register of Historic Places Nomination	

ACKNOWLEDGEMENTS

The following citizens of the Town of Brookfield, Massachusetts generously gave their time and wisdom in guiding the Brookfield Cemetery Preservation & Management Plan:

Cemetery Commissioners

Peter Masuzzo
John McDavitt
Wayne Yaskoski

Historical Commissioners

Ron Couture, Project Coordinator
Jean Eaton
Kermit Eaton
Diane Martell
Jan Wilson

Advisors to the Historical Commissioners

Rita Warman
Robert Wilder

*The Preservation and Management Plan is dedicated to
Peter Terry,
past Historical Commission Chairman, and for many years a cemetery commissioner devoted to the
documentation and care of the Brookfield Cemetery*

INTRODUCTION

The Brookfield Cemetery Preservation and Management Plan represents the first two in many steps toward preserving the Town of Brookfield's only cemetery. Set on land reserved by the town in 1718, the cemetery contains many historic gravestones and monuments, a grand stone entry gate, a holding tomb, and many historic trees. The purpose of this project is to (1) complete all necessary documentation for submittal of a nomination to the National Register of Historic Places, and (2) to develop a long term plan for preserving, maintaining and protecting the cemetery landscape.

Existing Documentation

As noted in the bibliography of this report, resources for the project derive from many sources. Historic maps of the Town of Brookfield, beginning in the 1790s and continuing to 1999, provided a graphic image of where the cemetery began in relationship to the town, and how it grew and changed. Historic photographs from the collections of the Old Sturbridge Village and Worcester Art Museum offered snapshots of the cemetery landscape in the 1880s and 1930s. Aerial photography from the 1970s showed modern cemetery expansions.

Complementing these graphic images, was a vast amount of written material. Cemetery deeds, housed at the Worcester County Registry of Deeds provided detail about the physical establishment and growth of the cemetery. Town reports, beginning in the 1840s recorded information about cemetery expenditures nearly every year. Records of the Brookfield Cemetery Commission provided detail about burial locations and dates.

The general history of Brookfield and the role of the cemetery in the town's social development was included in several narratives about Worcester County and the Brookfields. Unlike Hadley, Salem and other early Massachusetts towns, no definitive history of Brookfield exists. Town history, therefore, was compiled from several sources that cover larger geographic areas.

Finally, for landscape management and preservation, recent publications from the Massachusetts Department of Environmental Management (*Preservation Guidelines for Municipally-Owned Historic Burial Grounds and Cemeteries*, 2000), Olmsted Center for Landscape Preservation (*Guide to Developing a Preservation Maintenance Plan for a Historic Landscape*, 1998), and National Trust for Historic Preservation (*Preservation of Historic Burial Grounds*, 1995), provided excellent guidance for the Brookfield Cemetery landscape.

The BROOKFIELD CEMETERY LANDSCAPE in HISTORY

Beginnings

The origins of the Brookfield Cemetery date to 1718, when public records describe the town setting aside land located at the heart of the original Quaboag Plantation for a burial ground. At this time, Brookfield was an incorporated town, but encompassed present day North Brookfield, West Brookfield, East Brookfield, Brookfield, as well as the towns of Warren and New Braintree. The tiny burying ground located on the main east-west route through the Quaboag River Valley served this entire geographic area - an area that would become six individual towns.

The first burials took place in the 1720s. Townspeople began filling the northwest corner, and continued southeastward, digging graves as people passed away, and burying unrelated individuals alongside one another. Slate tablets often carved with Puritan symbols - curving vines, skulls, death's heads, and winged skulls - marked many of the graves. Markers faced west, with graves extending eastward from the markers. An open, grassy area of the northwest corner suggests that some graves may have been marked with impermanent materials (such as wood) or left unmarked altogether. While historical records do not provide other details about its landscape, the burying ground likely resembled a field, less than five acres in size. Turf paths likely lead to gravesites.

1756-1848

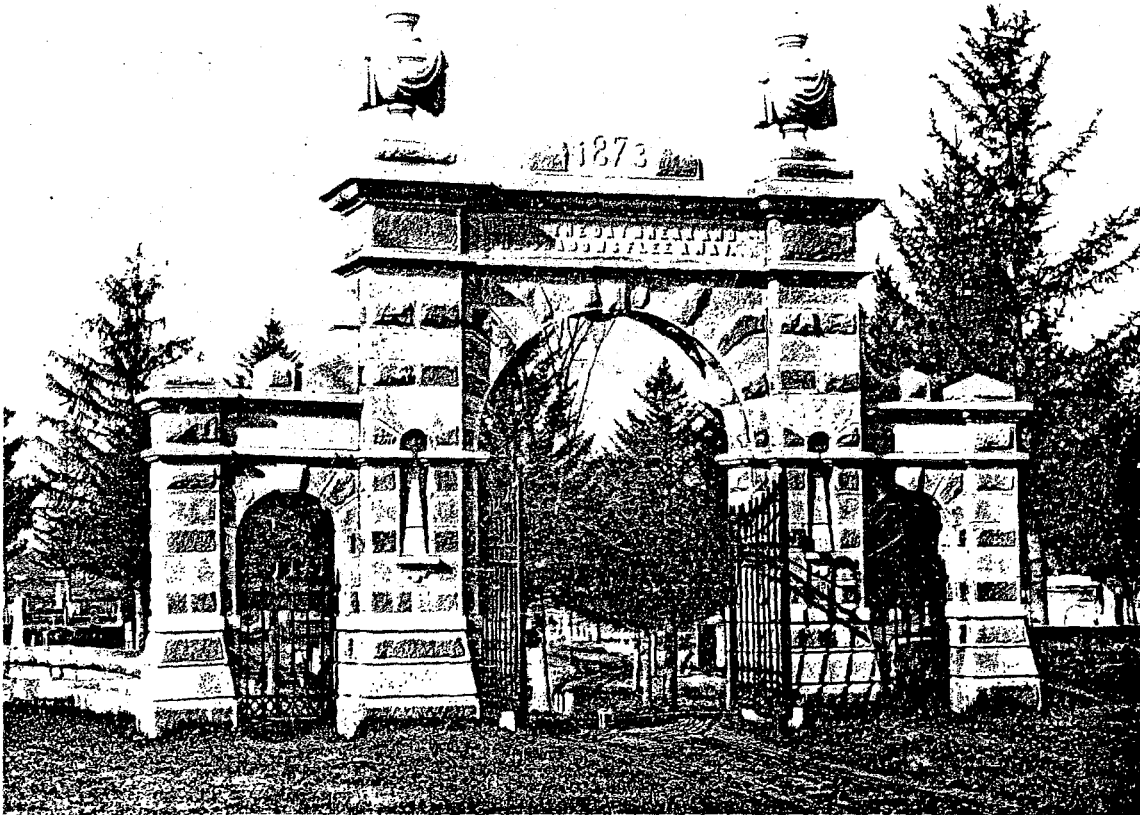
In 1756, the town enlarged the burying ground to five acres, and surveyed and staked the land. Warren had become a separate town in 1742, and North Brookfield broke away in 1812. By 1809, a new cemetery had developed to the west, and the separation of West Brookfield followed in 1848. The geographic area served by the Brookfield Cemetery gradually diminished in size.

During this period, details of the burying ground landscape likely remained the same. Most of the burials continued to be individual, with family plots emerging in the early part of the 19th century. Slate continued to serve as the predominant gravestone material, with marble becoming popular in the early 1800s. Town records show that part of the land was leased for cultivation of fresh meadow hay, and that the burying ground was at least partially fenced and/or walled. The town likely mowed the burying ground once or twice per year, probably using a scythe. Turf likely continued to cover the burying ground roads and paths.

1848-1900

Brookfield transformed the cemetery during the second half of the 19th century, updating it from a small burying ground to a true cemetery. The town added a hearse house in 1850, and by 1858, had staked and surveyed the land, creating family plots. In 1861, the town set up a committee to oversee development and care, and as a result, added many contemporary features. Stone retaining walls were added to family plots and the tomb was constructed. By 1867, town reports begin referring to the landscape as a "cemetery." In 1873, two prominent citizens - Banister and Hayden

- donated the stone arch gate, and in the next year, the town added the abutting stone wall. By 1890, the town had identified the need to honor its Civil War veterans, and constructed and dedicated the prominent zinc monument.



The 1873 granite arch gate, donated by Banister and Hayden, as photographed by Charles W. Eddy in 1886. The image appeared in the photographer's book, Brookfield Illustrated with Pen and Camera.

During this time, the cemetery acquired a Victorian appearance. Family plots, marked with central monuments and surrounded by curbs, copings and/or iron fences became the burial trend. Marble, and later granite, replaced slate as the popular monument and marker material, and many stones exhibited Victorian motifs (draped urns, many flower species, hands pointing toward the heavens, lambs). Turf and groundcover likely covered the cemetery floor, and periodic mowing likely continued with a scythe. Gravel roads became the norm, presenting a contrast to the early turf paths. The town may have introduced ornamental and shade trees, a popular practice in America during the latter half of the 19th century.

1900-2000

The 20th century brought modernization. The town enlarged the cemetery in 1937, 1941-42, 1952, and 1996, resulting in thirteen acres of developed cemetery land. In the 1930s, the town began bringing in fill to cover wetland areas and create more burial plots. The town also added the

flagpole and planted trees. By 1965, the sidewalk along the Route 9 edge had been added, providing pedestrian access to the cemetery from the center of town.

Landscape detail added a modern touch. New roads in the expansion areas were paved with bituminous asphalt, creating a more suburban look. Markers, constructed mostly of granite, became less ornate and were typically thirty inches high. Trees, planted during the 1930s, began to mature creating a canopy over the western half of the cemetery, and shrubs became popular as gravesite adornments. The town purchased a lawn mower, and began mowing the turf.

Today

In 2002, the Brookfield Cemetery still retains the character of these many phases in time, resulting in a landscape rich in history. Aging white pines and sugar maples canopy the westernmost section, providing a quiet, protective cover over the 18th century burials. The center section, dotted with family plots, stone retaining walls, the tomb, and grand entry arch, provides glimpses into Brookfield's Victorian era. And the easternmost section, marked by low, simple grave markers and decorative shrubbery, documents 20th century Brookfield. The town has maintained each landscape to the best of its ability, instilling in the cemetery a sense of dignity. By preparing the preservation and management plan, the town will assure that this dignity is retained, and history, preserved.

LANDSCAPE ASSESSMENT

The Brookfield Cemetery's thirteen acres include a diversity of landforms, plants and historic structures and other distinctive features. Cemetery high points stand along the northern edge, and from these, the topography tolls gently southward, meeting a wetland area at the southern edge. Dozens of historic trees, some reaching sixty inches in caliper, shade the cemetery's grassy burial areas. A wetland, rich in water-loving plants, spills into the cemetery's oldest section. Several stone retaining walls, a stone perimeter wall, a holding tomb, and the prominent entry gate further embellish the cemetery landscape. Refer to *Plan 2, Existing Conditions* for an illustration of the cemetery's features.

The following assessment of the Brookfield Cemetery landscape (1) documents the existing features, (2) determines the condition of the features, and (3) makes preliminary recommendations for treating the features. Together with the cemetery's history, the assessment provides a starting point for long-term landscape improvement and care.

Parking, Entrances, Circulation & Accessibility (Plan 3)

Visitors access the Brookfield Cemetery via Route 9 from the east or west, and may park either outside or inside the perimeter wall. Outside the wall, visitors leave their cars on either side of the 1873 entry gate, and across the street in a small gravel parking lot (privately-owned). Inside the wall, visitors park near the 1873 gate or along the roadways. Each parking spot near the 1873 gate resembles a worn patch in the turf lawn or dirt cemetery road, detracting from the elegance of the Victorian-style entrance.

The 1873 gate - a 20' granite structure with a central carriage entrance flanked by two pedestrian entrances - creates a dramatic portal into the cemetery. The arched carriage opening frames visitors' views into the cemetery's oldest sections, welcoming visitors into Brookfield's past. It separates the quiet cemetery landscape from the rush of Route 9, evoking a feeling of intimacy and privacy. It is one of the cemetery's most outstanding historic features.

In addition to the 1873 gate, visitors may proceed eastward on Route 9 and enter the cemetery through two other breaks in the perimeter wall. A center entrance leads directly to the Civil War Monument, while the eastern entrance connects to the newer cemetery sections. Visitors appear to use an eastern entrance more frequently, possibly because of its wider entry width, and the bituminous surface of its roadway. Its proximity to the cemetery's newer burials may also contribute to its use.

Roads and paths throughout the cemetery consist of several different surface materials including turf, dirt, gravel, chip seal and bituminous asphalt. The oldest sections contain only narrow (8-9 feet) grassy paths, sufficiently compacted to allow vehicles to pass. These complement the 18th century feel of these sections, providing discrete, unobtrusive access to the oldest graves. Dirt and gravel cover roads in the 19th century sections, appropriate treatments for this period in history. Again, compaction appears to have secured these roads from erosion and wear. Roads in the



The 1873 gate photographed from the Route 9 edge looking south into the cemetery.

newest section (post 1971) combine bituminous asphalt and chipseal, creating hard, modern surfaces. While popular during the 20th century, these surfaces detract from the simplicity of the turf and dirt/gravel roadways elsewhere in the cemetery.

Cemetery topography rolls gently from north, along Route 9, to south, along a marshy wetland. Nearly all roadways and most slopes are navigable by persons with disabilities (5% or less), making the cemetery accessible throughout. Visitor parking spots near the 1873 gate, described above, show signs of erosion, largely from overuse. A small culvert at the cemetery's southern end allows water from cemetery low point to drain to the surrounding wetland. Overall, the cemetery's topography appears stable.

The Brookfield Cemetery does not contain signs of any type. Visitors approaching the cemetery on Route 9 often pass the 1873 gate before seeing it, and once inside the cemetery, are not informed of cemetery rules and regulations. Signs outlining the cemetery's history and importance in the development of Brookfield do not exist on the grounds.

Context & Views (Plan 4)

The Brookfield Cemetery's setting complements its historic character. To the east lies an historic farm, with a barn and pasture, and a marshy wetland wraps around the west and south sides, creating a natural backdrop. Stonewalls line the west and north cemetery boundaries, creating a clear division between the cemetery and outside world. The northern wall, built of cut stone, guards the cemetery from Route 9. A row of mature sugar maple trees, planted outside the wall, further reinforces this edge. The western wall, constructed of fieldstone, draws a line between the



The cemetery's eastern edge provides a visually pleasing backdrop with its 19th century farmhouse and barn.

cemetery and adjacent wetland. A low hedge separates the cemetery from its western neighbor, and unmanaged, forested wetlands span the long southern edge.

Despite this distinctive setting, several intrusions mar the cemetery context. To the north, across Route 9, gravel parking and assorted commercial buildings conflict with the historic wall and row of sugar maples. One property owner, across Route 9 from the center cemetery entrance, has placed a sloppily-hand-lettered sign advertising low-cost housing near the road. Lack of shade trees along this Route 9 edge draws more attention to this mix of buildings, signs, and gravel parking areas. To the west and south, dense understory has infiltrated the wetland forest, resulting in a dense, messy appearance. The cemetery gravespoil area – several mounds of excavated soil – lies unscreened from view in the southeastern corner.

Views within the cemetery correspond to the cemetery's context. Pleasant views appear from inside the cemetery looking eastward, toward the farm. Views toward the wetlands, west and south, while somewhat obscured by the understory, provide glimpses of a spectacular marshy landscape. Many spots within the cemetery offer excellent views across the thirteen-acre landscape. Less pleasing views are of the commercial/residential development across Route 9 to the north, and of the gravespoil area to the south.

Vegetation (Plan 5)

The Brookfield Cemetery contains a mix of shade and evergreen trees, casting shade across the cemetery landscape and providing visitors a comfortable sense of scale. Of the 93 trees, nearly one-half (49%) are maples, and one-fifth (21%) are spruces. Pines and hemlocks stand in small quantities – 9% and 8% respectively. The remaining 13% are a mix of other evergreen and

deciduous species, including water-loving wetland plants. The cemetery contains a few shrubs in the form of gravesite plantings and borders inside the northern wall and along the eastern edge.

The heaviest concentration of trees lies in the oldest section, at the western end of the cemetery. Here, most trees exhibit calipers of 24" or more, with one white pine at 60". Moving eastward toward the newer sections, the trees become sparser, with the easternmost section completely absent of trees.



A mature white pine, located in the cemetery's oldest section. Over the years, severe storms and the aging process have lead to significant decay.

Turf covers the entire cemetery floor, creating a soft green carpet through the warm months. A mix of perennial groundcovers has emerged amongst the turfgrasses, providing rich contrast to the turf. These minimize the need for mowing and infuse variety into the cemetery landscape.

One of the cemetery's most distinctive natural features lies in the heart of the oldest section at the foot of the holding tomb – a vegetated wetland. This small finger of marsh contains a diversity of wetland trees, shrubs and herbaceous plants, offering an array of color and texture throughout the year.

Structures

Please refer to the attached *Engineering Assessment at the Brookfield Cemetery* (Appendix A) prepared by the CME/CPK Design Group for a detailed assessment of the cemetery's gate, walls, tomb, retaining structures, plot curbing, and other structural features.

Monuments & Markers

The cemetery contains monuments and markers of many shapes, sizes and materials, and in varying condition. The oldest markers lie in the westernmost section, and consist mostly of gray slate, brown sandstone, granite, schist and quartzite. Most take the shape of a simple tablet. The central section contains many marble markers from the Victorian period, in the form of tablets, columns, shafts, obelisks, and three-dimensional urns. Black, gray and red granite predominates in the easternmost section, with many 30" markers and flush tablets.

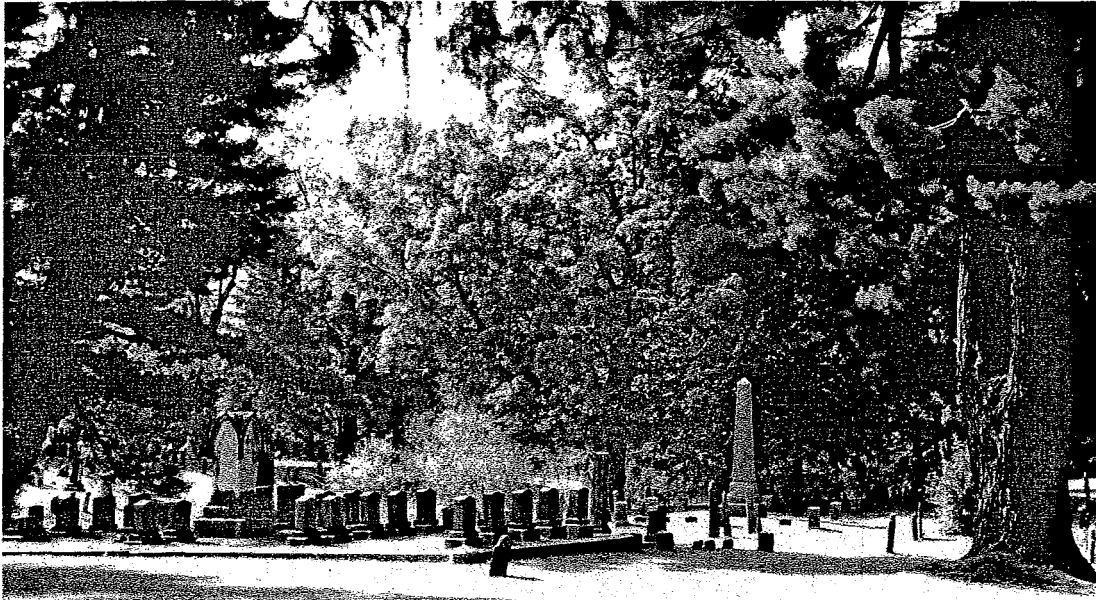


A broken cemetery tablet stone, covered with biological growth. Many damaged stones appear throughout the cemetery, suggesting the need for a gravestone assessment.

Overall, the monuments and markers stand in fair condition. Many tablets are tilted or broken, and many monuments and markers contain biological growth. The town has not commissioned a detailed inventory of the stones, and therefore no record exists of (1) the name on each marker, (2) date of death, (3) material, (4) type of stone and (5) carver (if known), and the stones have not been photographed. Similarly, an assessment of the condition, recommended treatment, and priority for repair has not been completed.

Historic Cemetery Styles (Plan 6)

The Brookfield Cemetery's history spans two and one-half centuries, and this history is reflected in the cemetery landscape. At the northwestern corner lies the oldest section, created and active before 1830. Here, unrelated individuals are buried aside one another, arranged in rows, with simple slate tablets marking their graves. Several patches of turf stand open, suggesting the presence of unmarked burials. The fieldstone wall rimming the western edge may have once marked the line between the cemetery and adjacent farmer. This old section reflects the style typical of the town burial ground.



Family plots, marked with a central monument and surrounding by a granite curb or coping, typify the burial trend of the mid 19th century.

The cemetery's mid section, including the 1873 gate and perimeter wall, Civil War Monument, town holding tomb, stone retaining walls, and wetland (or water) feature depicts a landscape of the early (1830-1859) and late (1860-1900) Victorian periods. Here, family plots replace the practice of burying unrelated individuals in adjoining graves. Several small individual headstones surround large, prominent family markers. Stone curbing, retaining walls, and iron fencing surround the plots. Grassy paths and gravel roads allow visitors easy access to burials. This mid section reflects the park-like, highly ornamental character of the Victorian era.

After 1900 cemetery design became more efficient and uniform, a style reflected in the easternmost and two southernmost sections. Family plots, while still popular, are small in area, and their markers, a uniform 30 inches in height. Roadways reflect a suburban aesthetic, with bituminous surfacing. The landscape lacks trees, allowing for easier mowing.

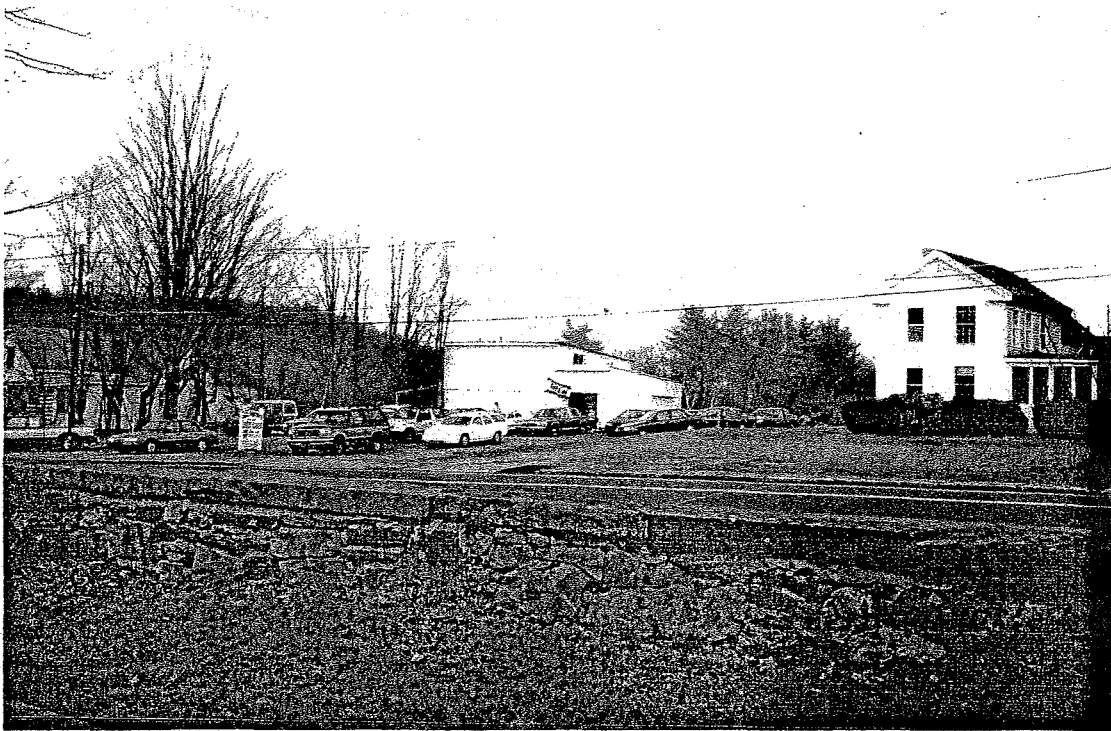
Assessment Summary

- The Town of Brookfield should introduce a program of signs to: (1) mark the cemetery entrance as visitors approach on Route 9, (2) welcome visitors to the cemetery, and relay cemetery rules and regulations, and (3) outline the history of the cemetery and its importance in the development of the town.
- A defined parking area or areas should be created for visitors to the cemetery. This will prevent overuse of the 1873 gate entrance and erosion of adjacent turf and slopes. This parking area should be marked.
- Roads and paths throughout the cemetery should be constructed of no more than two materials, preferably grass and dirt/gravel. These complement the cemetery's diverse historic landscapes, while at the same time offer a stable driving surface. Bituminous asphalt should be removed and prohibited from future use.
- The town should pursue tree plantings in the public right-of-way across Route 9 from the cemetery. This will help soften this harsh residential/commercial edge.
- The invasive understory in the surrounding wetlands should be removed to allow light to infiltrate the wetland floor. This will improve views through the wetlands and allow healthier tree and groundcover growth. Selective clearing in the wetlands will allow unobstructed views of the distant marshy areas. The town should work with the abutter on the cemetery's western side to better manage the wooded wetland areas.
- New tree plantings should be introduced to replace the mature trees as they die. These should include both deciduous and evergreen species trees, and involve a diversity of species. The rule of thumb for plantings in a landscape of this type is no more than 10% of one genus and 5% of one species.
- The many perennial groundcovers should be retained and encouraged to grow and flourish.
- The wetland area in the cemetery's older section should be retained and enhanced.
- The cemetery's structures should be treated per the recommendations of the structural assessment. In particular, the 1873 gate should be cleaned and its ironwork removed and restored, and the tomb should be restored. Portions of the perimeter wall (northern edge) should be reconstructed.

RECOMMENDATIONS

The following section provides specific recommendations for treating the landscape of the Brookfield Cemetery. A visual summary of these appears in Plan 7. The recommendations combine one or more preservation treatment methods, including stabilization (preservation), restoration, rehabilitation, and reconstruction.

Route 9 Edge



The northern edge of Route 9 contains no trees, leaving its many buildings and driveways exposed to the street and cemetery. A planting of street trees along this edge will help soften the cemetery's context.

As noted in the landscape assessment, the edge along Route 9 both complements and detracts from the cemetery's character. The new plantings of cherry trees, interspersed with the mature sugar maples, form a strong edge along the south side. But the lack of trees along the north side allows the mix of buildings, signs and gravel parking areas to visually spill over into the cemetery. The significant width of Route 9's pavement along the cemetery boundary adds further harshness to this historically important edge. The following improvements will help soften these conflicting elements, and provide a more dignified setting for the cemetery:

- Continue to maintain the south side of Route 9 by regular mowing, planting spring bulbs, and caring for the new and old trees. Consider planting new sugar maples among the

cherries to assure that the tall sugar maple canopy endures. New plantings of bulbs under the new trees will add color and texture to the spring landscape. However, the town should NOT plant bulbs directly under the mature sugar maples, as excavation may harm the roots.

- In coordination with MassHighway and the Town of Brookfield Department of Public Works, consider planting shade trees on the north side of Route 9 - trees that complement the sugar maples in height. This will help establish a canopy over the roadway, creating a traffic-calming device.

Parking

Currently, visitors park around the 1873 gate, cluttering the look of the cemetery's most distinctive and outstanding feature. Parking should be prohibited from this area, and moved to the cemetery interior, in designated spots along roadways. Signs should be placed in spots where gravesites lie a minimum of five feet from the roadway. The cemetery welcome sign should spell out regulations for parking.

Entrances, Paths & Roadways

Entrances

While vehicular access to the cemetery is possible at three points, cars most frequently enter the cemetery at two - the 1873 gate and the modern gate at the cemetery's eastern end. By taking the following steps, the town can control vehicular use of the entrances, and provide separate, safe entryways for pedestrians.

- Retain the 1873 gate and eastern gate as the two vehicular entrances by marking them with entry signs (see *Visitor Amenities*, below).
- Replace the sets of bollards obstructing the two pedestrian gates with decorative steel gates. Place the gates on hinges, allowing pedestrians to open and close the gates when they enter and leave the cemetery.
- Prohibit vehicles from parking around the 1873 gate by installing curbing, plantings, benches and signs, as shown in Plan 8.

Turf Paths

Turf cart paths provide access to gravesites in the older (Colonial and early Victorian) sections of the cemetery, evoking a late 18th and early 19th century feel, and making a large contribution to the historic value of the cemetery landscape. The town should retain these, and under no circumstances introduce paved surfaces. When ruts occur, the town should fill holes and grooves with crushed stone or gravel (such as traprock), and allow turf to naturalize around filled areas. Adding four to six inches of topsoil and seed to the gravel will expedite the naturalizing process. The gravel will reinforce the turf, minimizing future wear.

Gravel Roads

In the newer (late Victorian and Modern) sections, the town should select one type of paving material, such as gravel or chip seal (a bituminous asphalt surface rolled with gravel). Either will

result in a more historically-sensitive roadway treatment. Gravel, while less stable, restores what was likely the original surface material to the late Victorian section. Chip seal, while more expensive to install, provides a lower maintenance surface and will give the appearance and feel of gravel.

Plants

Existing Woodland (Restoration)

Unmanaged woodland lies along a significant portion of the cemetery's western edge, blocking many outstanding views through marshes to the Quaboag River. Small volunteer trees have sprung amidst the large trees (over 18" in caliper), competing for nutrients and prohibiting light from penetrating through to the woodland floor. Dead or decaying trees have not been removed, adding greater clutter to the woodland. The following measures can be taken by the town to upgrade the existing woodland:

- In areas not designated as wooded wetland, remove dead or decaying trees and selectively clear volunteers to promote healthier growth of the middle-aged and older trees. Removal and clearing will also allow light to filter through the canopy, and foster growth of healthy woodland groundcover.
- Remove enough trees to allow occasional views across the marsh to the Quaboag River. The best locations for such views appear at the northwest and southwest cemetery corners.



The small wetland penetrating the cemetery's oldest section could be enhanced by controlling invasive species and introducing new native wetland plants.

Existing Wetland (Restoration)

Alterations to the wetlands surrounding and within the cemetery will require review and approval by the Brookfield Conservation Commission, who administers the Massachusetts Wetlands

Protection Act for the town. Depending on the town's interpretation of the Act, the cemetery commission may be able to minimally alter the wetland vegetation to upgrade its appearance. All proposals for alteration must be reviewed and approved by the Brookfield Conservation Commission. **NO ALTERATIONS SHOULD BE MADE WITHOUT A NOTICE TO PROCEED FROM THE COMMISSION.** Improvements could include:

- Removing any exotic invasive species such as *Lythrum salicaria* (purple loosestrife).
- Adding wetland species such as *Vaccinium corymbosum* (highbush blueberry), *Chamaedaphne calyculata* (leatherleaf), *Kalmia angustifolia* (sheep laurel), and other plants found in shrub swamps.

Existing Trees (Stabilization)

Mature maples, pines, spruces and hemlocks contribute significantly to the historic character of the cemetery. To insure their long-term health, the town should commission a certified arborist to conduct a tree-by-tree inventory with specific treatment instructions for each tree. Such an inventory will spot any diseased or dying trees for removal, and indicate others in need of special care. In the meantime, the town can follow some basic tree care guidelines:

- Test the soil of the cemetery for quality in relationship to the mature tree population. The test will detect any soil deficiencies, and determine a remedy for correction. Contact the University of Massachusetts Extension Program, located in Amherst, for help in performing these tests.
- Remove all dead or decaying trees and grind stumps to grade being careful not to interfere with gravesites. In areas where graves lie near the base of dead trees, do not grind the stumps.
- Prune dead or dying tree branches of ½" or greater in caliper.
- Provide and install cables to trees with weakly joined limbs.
- Treat trees with a systemic insecticide to minimize stress caused by leaf-feeding pests.
- Create a ring of mulch around the base of each tree, as wide as possible and up to the diameter of the tree crown.
- Where soil has built up at the base of trees, remove enough to expose the root collar.

Existing Turf (Stabilization)

Turf mixes with ground covers throughout the cemetery. The following fertilizing and mowing guidelines will help maintain a lush, green appearance and insure healthier, longer lived plants:

Fertilize sparingly, as too much fertilizer can cause grass to grow too rapidly, requiring more mowing and making the plants more susceptible to disease. Not enough fertilizer can result in weaker plants that are more susceptible to disease or stress brought on by drought.

- Apply fertilizer three times per year - around Memorial Day and Labor Day, and finally, around Halloween.

- Do NOT fertilize in mid-summer. At this time of year, roots have become dormant. Fertilizer will cause the leaves to grow, making the plants less tolerant of drought, heat and disease.
- Follow these fertilizing instructions:
 - *Memorial Day* – apply 1 pound of Nitrogen per 1,000 sf (with 50% of Nitrogen slow-release). Use an N:P:K Ratio of 14-14-14.
 - *Labor Day* – apply 2 pounds of Nitrogen per 1,000 sf (with 50% of Nitrogen slow-release). Use an N:P:K Ratio of 14-14-14.
 - *Halloween* – apply 1 pound of Nitrogen per 1,000 sf (with 75% of Nitrogen slow-release). Use an N:P:K Ratio of 28-3-9.
- When mowing, remove no more than one-third of the height of the turf at one time, always leaving twice as much leaf height as is cut.
- The best level for mown grass is 2 ½ inches, with 2 to 3 ½ inches the range.
- It is best to mow lawns on an as-needed basis, not on a regular schedule, such as once per week.
- When mowing around monuments and markers, the town should avoid contact between the equipment and stones. Slashes near the base of stones are one the most common causes of breakage. Weed-whackers should be used sparingly, and preferably not at all.
- When mowing in autumn when leaves have fallen, employ a mulching mower. Such mowers use a special blade and enclosed deck to slice up grass clippings and dried leaves numerous times before depositing them back deep into the turf. Once settled amongst the turf, the leaf and grass particles decompose in a few days, infusing needed nutrients.
- When ever possible, allow perennial ground covers to grow and flourish, as they minimize the need for mowing and spread many textures and colors across the cemetery landscape. Allow each existing ground cover time to bloom, wither, and cast its seeds before mown. Weed killers and other such herbicides should not be used near these plants (many ground covers are classified as weeds).

New Plants (Rehabilitation)

Historical records do not indicate the exact location and species of plants at the Brookfield Cemetery, and therefore the town cannot reconstruct original planting schemes. However, the following palettes offer a selection of trees appropriate to each section of the cemetery (Colonial, early Victorian, late Victorian, and Modern). This palette will help diversify the existing collection of trees, as well as augment the distinctive feel of each section.

Colonial & Early Victorian Sections (Before 1859)

<i>Acer rubrum</i> */**	Red Maple
<i>Amelanchier canadensis</i>	Shadblow Serviceberry
<i>Cedrus libani</i>	Cedar of Lebanon
<i>Cladrastus lutea</i>	Yellow Wood
<i>Cornus mas</i>	Cornelian Dogwood
<i>Franklinia alatamaha</i>	Franklinia

Ginkgo biloba**	Maidenhair Tree
Juglans cinerea	Butternut
Koelreuteria paniculata	Golden Rain Tree
Liriodendron tulipifera	Tulip Tree
Nyssa sylvatica*	Black Tupelo
Platanus occidentalis*/**	Sycamore
Populus tremuloides	Quaking Aspen
Quercus robur	English Oak
Quercus velutina	Black Oak
Salix babylonica*	Weeping Willow
Sophora japonica	Scholar Tree
Ulmus americana 'Liberty'**	Liberty Elm

Late Victorian and Modern Sections (1860-Present)

Abies concolor	White Fir
Acer palmatum	Japanese Maple
Aesculus hippocastanum	Horse Chestnut
Cercidiphyllum japonicum	Katsuratree
Chamaecyparis obtusa	Hinoki False Cypress
Cornus florida rubra	Pink Dogwood
Fagus sylvatica	European Beech
Larix laricina	American Larch
Picea pungens	Blue Spruce
Tilia tomentosa**	White Linden

*Indicates wetland species

**Indicates street tree

As part of its planting policy for the cemetery, the town should adopt a "no shrub" rule. As shrub plantings at gravesites grow and mature, they begin to obscure plots, increasing the cemetery's maintenance needs. Instead, the town should ask families to donate trees to the cemetery, allowing for the replacement of dead trees with new, needed species.

Structures

Twitchell Plot Wall

The wall surrounding the Twitchell plot stands in very good condition, and simple careful cleaning will improve its appearance. The town should never employ high pressure water blasting or sand blasting methods, but rather use a modern masonry cleaner. Such cleaners will remove dirt and grime without damaging the base material.

Kimball Plot Wall

A sinkhole has formed behind the Kimball plot wall, adding pressure to the soil behind, and causing the wall to fail. The town should not replace the wall, but may employ one or more of the following measures to slow the failure process:

- Redirect the surface rainwater away from the wall;

- Replace the backfill material immediately behind the wall with a lightweight material such as expanded shale crushed stone; and/or
- Core weep holes through the face of the existing walls.

The town can further stabilize the Kimball plot wall by removing the trees and shrubs growing from the face, and resetting any adjacent stones.



The Twitchell plot wall, a mortared rubble retaining structure, is in very good condition and can be improved through simple cleaning.

Front Border Wall

While the overall condition of the front border wall is good, the town can employ one or more of the following measures to improve its integrity and upgrade its appearance:

- Clean and properly re-point the joints with quality mortar;
- Carefully dismantle the wall, remove the mortar, and reconstruct the wall without mortar;
- Reconstruct the collapsed portions of the wall with either a quality mortar or without mortar altogether.

1873 Arch & Gates

The 1873 gate has settled over time, but at a slow rate. Unless the movement continues at an accelerated rate, the town should not dismantle and reconstruct the wall. Complete failure will take many, many years. The following steps will help stabilize the gate:

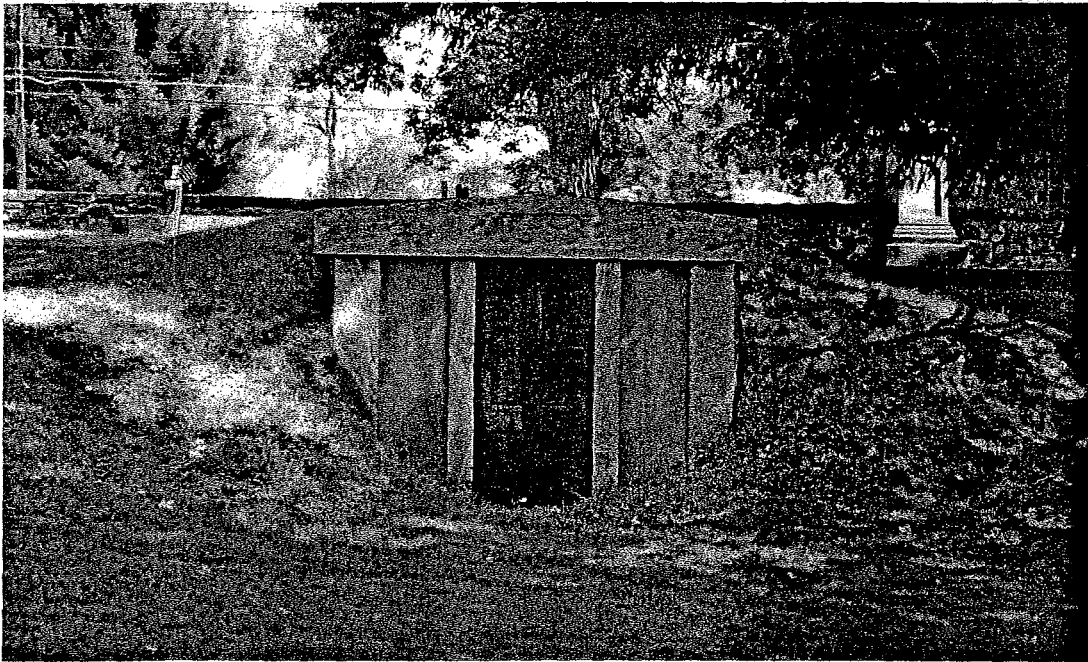
- Re-point any open joints in the arch with a mortar similar in color, texture and material to that in the majority of the bead joints;
- Clean the arch of residue and stains. Do not employ high-pressure water blasting and sand blasting techniques, as they may damage the surface of the stone and mortar. Select a high-quality masonry cleaner and use in strict accordance with the manufacturer's

recommendations. Clean a small test area first in order to determine the effectiveness of the cleaner.

To repair the iron gates, the town should employ a professional metals conservator, who will likely remove the panels to a metals shop. The following work should be included in the gate restoration:

- If required, replace the rods that hold the gates together;
- Replace the broken and missing castings with new castings (original pieces still extant can be used to make molds for the new);
- Remove the paint completely. Special care should be taken with the removal, as the paint likely contains lead. Determine the original paint color during the removal process and re-paint the finished gates with a modern paint system of a matching color;
- Straighten the bent places;
- Re-install the gates on the existing hinges.

Town Tomb



The Town Tomb, constructed of granite in 1861, stands in very good condition. Installing a proper drainage system around its perimeter will prevent water from seeping through the floor.

As noted in the structural assessment, the Town Tomb is in very good condition, with the exception of leaks in the ceiling. To restore the structure to its original condition, the town should adhere to the following guidelines:

- Remove the soil over the top of the tomb to the base;
- Mortar the gaps in the ceiling near the tomb façade;
- Apply a quality waterproofing seal to the tomb roof;
- Install a new drainage system around the perimeter of the tomb to prevent groundwater from percolating up through the floor;
- Backfill the structure with a quality soil that is not frost-susceptible;

- Clean and repaint the door, and purchase and install an historically-sensitive lock-set; and
- DO NOT repair the damaged door jamb. This is a costly measure that will detract from the historical integrity of the structure.

Monuments & Markers

Stone Assessment

Many monuments and markers at the Brookfield Cemetery show signs of damage and/or decay, and should receive treatment in the near future. Before treatment begins, the Town of Brookfield should invest in a stone-by-stone assessment of the pre-1900 monuments and markers, most of which lie in the northern two-thirds of the cemetery. A trained gravestone conservator must complete such an assessment (names of qualified individuals may be obtained through the Association for Gravestone Studies, see the "Implementation" section of this plan), which should include, at a minimum:

- A review of historical documents pertaining to the cemetery the National Register of Historic Places nomination (included in this plan), and sources noted in the nomination's bibliography;
- A listing of each marker (head and foot stones), organized according to the type of conservation needed;
- A complete inventory form for each marker, including full name(s) of the deceased, date of death, material, type of stone, carver (if known), recommended treatment, and priority for repair. The inventory form should also include a photograph of the marker, before conservation treatment occurs;
- An annotated map of each cemetery recording the location of marker requiring treatment; and
- A phasing plan for conservation.

Stone Fragments

Many fragments of head and foot stones lie scattered about the cemetery. To properly care for such remnants as they await conservation, the town should take the following steps towards developing a "fragment collection":

- Document each fragment, assigning an identification number and recording (1) the cemetery and location in which it was found, (2) the name (if any) on the stone, (3) any other information on the stone, and (4) the stone's material. Make a sketch of the stone and note any missing pieces.
- Do NOT discard any piece of the fragment.
- Collect all the pieces that are broken and lying on the ground. Include any pieces that have been embedded in the ground.
- Store each fragment in a dry, secure place, in a wooden box (if possible), resting on 1"-thick Styrofoam. Do not tightly pack material around the fragment (it must be allowed to breathe). Do not stack the stones.

- As an alternative to storing the fragments, bury them adjacent to their parent stone (if known), in holes 10" to 15" deep. Place 2" of clean fine-graded sand in the holes, and lie the stones down face up. Cover the stones with sand, and then topsoil and seed. Create a record of the buried fragments, including all information listed above, as well as their location.

Volunteer Activities

An additional approach to gravestone conservation involves organizing a group of volunteers to attend the annual Association for Gravestone Studies conference, held each June (refer to the "Recommendations" section of this plan for more information about the association). Here, trained professionals provide hands-on training in simple gravestone conservation techniques. The Town of Brookfield may also want to invite a gravestone conservator to the cemeteries to conduct a one-day gravestone conservation workshop for volunteers. *Each of these activities should occur in concert with (not as a substitute for) the professional stone inventory.*

Decorative Features

Plot Fencing

The cemetery landscape would be enhanced through the restoration of missing decorative plot enclosures. The town should enlist a professional metals conservator to evaluate the existing plot fencing, and make an assessment of material, condition, and appropriate treatment method. Lead paint covers much historic metalwork, requiring special techniques for abatement.

At plots where metalwork is no longer extant, the town may opt to introduce reproduction fencing, as a means of enhancing the character of the early and late Victorian sections. Such additions should complement the scale and detail of the monuments and markers they enclose.

Plot Copings

Granite curbs or copings surround many of the family plots in the early and late Victorian sections. To repair those that have failed, the town can employ the following measures:

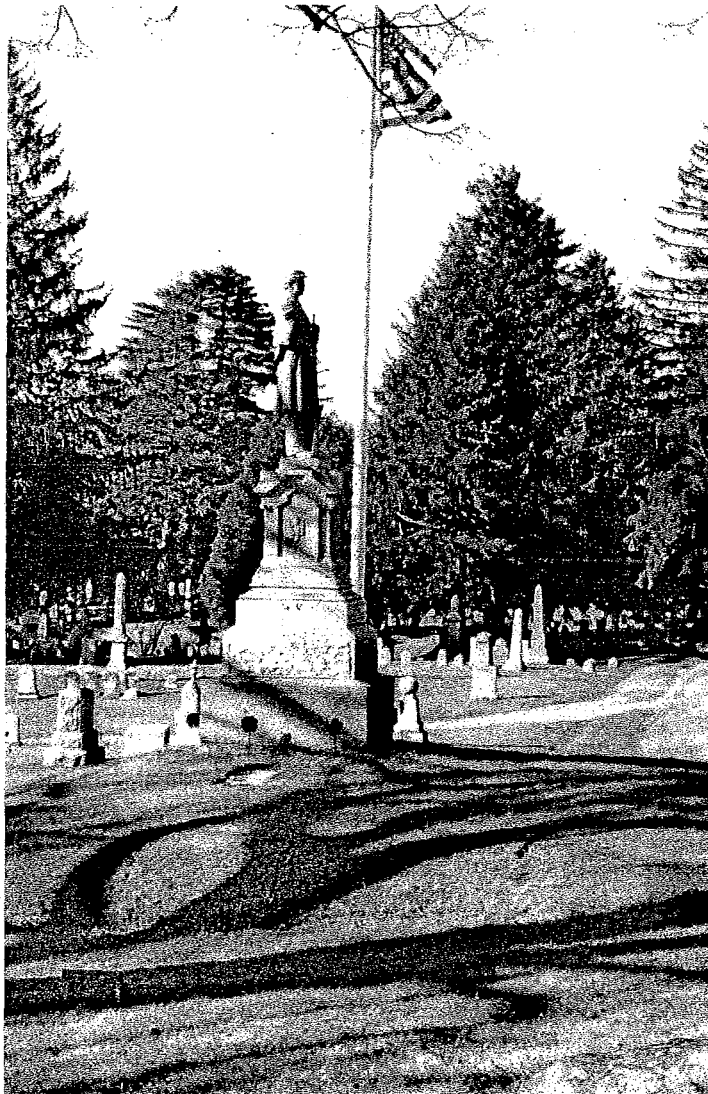
- Remove the soil beneath the structure to a depth of 18 to 24 inches and replace with a compacted granular subbase material (a material far less prone to settlement and frost heaving);
- Pin the stones together with either brass or stainless steel rods; and/or
- Leave the joints between stones open, or point with lead sheeting (do not use mortar, as it is prone to cracking with even minor shifting of the stone).

Civil War Monument

The zinc civil war monument, tucked just inside the southern pedestrian entrance through the front border wall, is one of the town's most beloved memorials. As illustrated in Plan 9, the following additions to its environs will improve access to the monument and, at the same time, enhance its aesthetic beauty.

- Create a stonedust pathway leading from the pedestrian entrance to the monument, and continue the path around the base of the monument.

- Construct a low (18") retaining wall around the base of the monument to allow spots for additional veterans' names.



The Civil War monument, dedicated in 1890, stands out as one of the cemetery's most prominent features. By adding a simple walkway and retaining wall around its perimeter, visitors will be able to better access its base and the graves of soldiers buried at its foot.

- Plant perennial ground cover and bulbs between the retaining wall and monument structure to minimize mowing close to the base, and give special prominence to the monument.
- Place a sign alongside the monument describing its origins and importance to the town, as well as the service of Brookfield residents in the Civil War.
- Consider relocating the flagpole to a larger setting, one that provides a visually-pleasing backdrop as well as a generously-size foreground gathering spot.

Visitor Amenities

Signs

Other than the inscription on the main entry gate, the Brookfield Cemetery contains no signs. Visitors arrive at the cemetery not knowing where to park, and once inside the gate, are not informed of the cemetery hours or rules. The town should invest in a sign program, consisting of one, coordinated design, and constructed of substantial material. Signs will have particular importance when the cemetery achieves status on the National Register of Historic Places. The new signs should adhere to the following guidelines:

- The sign boards and support materials should be permanent and historically sensitive, such as black aluminum or bronze, supported by steel and/or granite posts.
- Lettering should be white (or lighter in color than the board's background) and large enough to be read by motorists passing slowly.
- Entry signs should stand inside the main and southern entry gates. Each board should contain the cemetery name, its founding date, a short description of its importance to the history of the Town of Brookfield and State of Massachusetts, regulations for visitors, and, when achieved, its status on the National Register.
- Interpretive signs should be placed alongside the cemetery's most important gravesites and/or features. The historical commission and cemetery commissioners should join forces to choose the gravesites and/or features.

Benches

The Brookfield Cemetery's narrow unpaved roadways and grassy paths offer a particularly friendly walking environment for visitors. Because the gravesites spread over thirteen acres and alongside over one mile of road and pathway, the town may want to place benches, allowing visitors spots to rest as they stroll the grounds. Adhere to the following guidelines, when selecting a bench material and choosing locations:

- Opt for a low-maintenance bench material, such as stone. Wood benches may require periodic painting or staining, and can attract deviant wood carvers. Aside from graffiti, little damage can be done to stone. The benches will last indefinitely.
- Select ONE style of bench for use throughout the cemetery. A stock item, provided by a quarry or stone supplier will be the lowest in cost, and most easily obtainable.
- Space the benches close enough to one another so that visitors will not have to travel more than 1/10th mile (approximately 500 feet) between stops. Too many benches will create clutter in the landscape.
- Place the benches in protected areas and in spots that will provide visitors with views.
- Do not place benches near the bases of mature trees, as their weight may damage tree roots and foot traffic may lead to compaction.

Cemetery Storage

Currently, the cemetery commission stores tools in the small shed on the cemetery's western side, and deposits excavated soil nearby. While the shed appears neat and tidy, the mound of "grave spoil" blocks westward views across the marsh to the Quaboag River. Relocating the pile to a less visible spot will help restore these views. The best location for spoil is at the edge of the cemetery's undeveloped portion (southern side). Here, spoil may be spread over a larger area to minimize the appearance of a pile. If desired the cemetery commission can use the spoil to create berms and undulating landforms in the undeveloped portions of the cemetery.

IMPLEMENTATION

Preservation Priorities & Costs

The following list organizes the recommendations by priority, and assigns a preliminary cost to each. Recommendations marked by an asterisk (rather than a cost) may be undertaken by the cemetery commissioners and/or Town of Brookfield Department of Public Works. Note that the cost figures are merely projections, intended as guidelines for the town in setting fundraising goals.

High Priority Projects

Turf Path Maintenance	*
Tree Inventory	\$ 7,500
Tree Stabilization	\$25,000
Turf Management	*
New Tree Plantings	\$10,000
Gravestone Assessment	\$10,000

Medium Priority Projects

Sign Program	\$ 6,000
Route 9 Edge Plantings	\$ 7,500
Designated Parking Areas	*
Restored Main Entrance	\$50,000
Gravel Road Restoration	*
Woodland Management	*
Wetland Management	*
Tomb Restoration	\$20,000
Fragment Collection	*
Volunteer Training	\$ 2,500
Benches	\$ 3,000
Grave Spoil Relocation	*

Lower Priority Projects

New Pedestrian Gates	\$ 5,000
Plot Wall Cleaning	\$ 2,500
Front Border Wall Restoration	\$20,000
Civil War Monument Enhancement	\$30,000
Restored Plot Copings	cost varies
Restored Plot Fencing	cost varies

Cemetery Preservation Resources

The following organizations can provide advice, guidance, and technical assistance with preservation efforts in historic cemeteries:

The Alliance for Historic Landscape Preservation. The Alliance is an organization of professionals dedicated to the preservation and conservation of historic landscapes in all their variety from formal gardens to public parks to rural expanses. The organization provides a forum for communication and exchange among its members.

The Alliance for Historic Landscape Preservation
82 Wall Street, Suite 1105
New York, NY 10005
www.mindspring.com/~ahlp/

American Association for State and Local History. This national organization provides leadership, service and support for preservation and interpretation of state and local history, making the past more meaningful in American society. The organization's bookstore offers dozens of titles pertaining to historic preservation.

American Association for State and Local History
1717 Church Street,
Nashville, TN 37203-2991
(615) 320-3203
www.aaslh.org

The Association for Gravestone Studies. AGS is a non-profit organization dedication to the study and preservation of cemeteries and gravestones.

The Association for Gravestone Studies
278 Main Street, Suite 207
Greenfield, MA 01301
413-772-0836
www.gravestonestudies.org

Center for Historic Cemeteries Preservation. This organization is involved in promoting the study, documentation, and preservation of historic burial sites.

Center for Historic Cemeteries Preservation
Sharyn Thompson
P.O. Box 6296
Tallahassee FL 32314
850-877-9014

Chicora Foundation, Inc. This public, nonprofit heritage preservation organization is engaged in archaeological and historical research, public education, and conservation and preservation with museums, libraries, archives, historic organizations and private citizens.

Chicora Foundation, Inc.
P. O. Box 8664
Columbia, SC 29202-8664
803-787-6910
www.chicora.org

The Cultural Landscape Foundation. The Cultural Landscape Foundation seeks donations and gifts from corporations, individuals, private foundations and government grants to increase the awareness and public benefit for cultural landscapes listed on, or eligible for the National Register of Historic Places. Project support emphasizes interpretation, education, outreach, and public awareness.

The Cultural Landscape Foundation
1909 Que Street, NW
Third Floor
Washington, DC 20009
202-483-0553

Historic Massachusetts, Inc. HMI is a state-wide nonprofit organization dedicated to preserving the State's cultural and historic resources through advocacy, education and community revitalization. HMI sponsors an annual meeting - a day-long gathering with symposia and workshops, and announcement of the Commonwealth's most endangered resources.

Historic Massachusetts, Inc.
45 School Street
Boston, MA 02108
617-723-3383
www.historicmass.org

National Preservation Institute. This nonprofit organization provides preservation information, knowledge, and skills to train and guide the stewards of historic and cultural places through seminars in historic preservation and cultural resource management.

National Preservation Institute
P. O. Box 1702
Alexandria, VA 22313
703-765-0100
www.npi.org

APPENDIX A: ENGINEERING ASSESSMENT AT THE BROOKFIELD CEMETERY, BROOKFIELD, MASSACHUSETTS

STRUCTURES AT THE BROOKFIELD CEMETERY

This purpose of this report is to review the existing conditions of the significant structures located within the Brookfield Cemetery. These structures include the following:

- Entry Arches and Gates
- Town Tomb
- Family Plot Retaining Walls
- Front Border Wall
- Family Plot Curbing

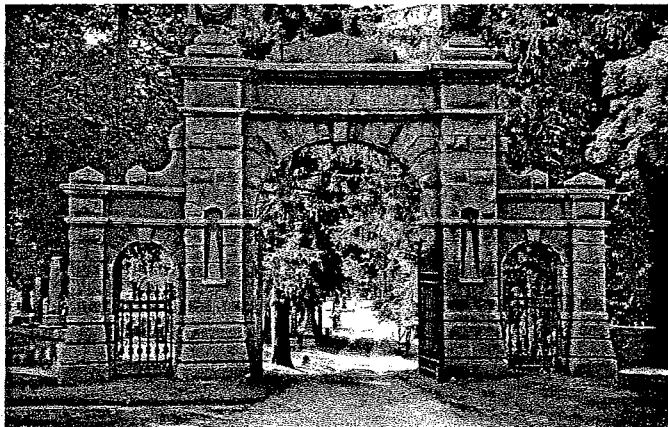
BRIEF HISTORY OF STRUCTURES

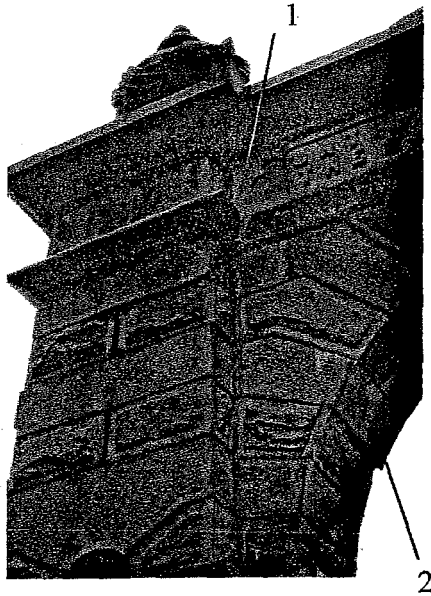
The Brookfield cemetery has undergone several expansions over its history. The oldest portion of the cemetery is to the east. The only substantial structures that exist in this portion of the cemetery include the Town Tomb built in 1861, and two family plot retaining walls. These two retaining walls which surround the Kimball and Twichell family plots were probably constructed at different times, most likely by each individual family. The exact age of each of these walls is not known.

The front entry gate and stone arch is the most significant structure in the entire cemetery. It appears that the arch and the front border wall were constructed together in 1873. The arches were donated to the Town by W. A. Banister and Otis Hayden, both of whom are buried in the cemetery. The construction of the arches and the front border wall were probably part of a significant cemetery expansion. There is however, a small portion of the front border wall that appears to have been added in one of the most recent expansions to the east.

EXISTING CONDITION OF THE ENTRY ARCH

The entrance to the Brookfield Cemetery consists of a very elaborate stone archway with iron gates. The arch was constructed in 1873, and it is built with cut granite block masonry. From a distance, the arch appears to be in excellent conditions. A hands-on inspection was performed which led to the discovery of several significant structural problems.





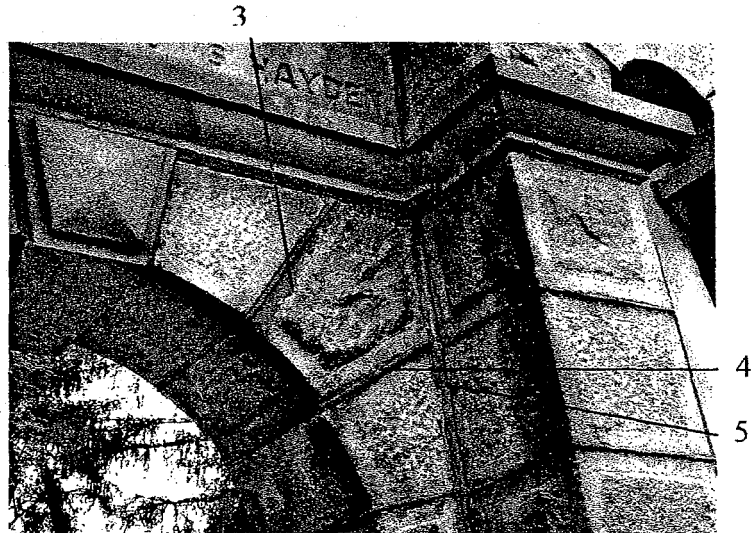
The arch shows signs of long-term settlement problems. The joints between the west center post and the main arch is open approximately 1 inch from its original position (1). The arch stones are also shifted laterally (2). There are similar signs of movement on the east center post, but they are not as pronounced. This shifting of stones is a classic sign of settlement problems. The most likely cause is the settlement of the west center post.

The actual stones are in excellent condition with a few exceptions. There is an old corner spall on one of the stones near the bottom of the west center post. This spall was probably the result of a snow plow hit. The piece that broke off has been re-attached with what appears to be an epoxy. The repair is holding up well.

Movement and settlement of large stone structures can be a result of three problems:

1. *Poor soil conditions under the footings:* If the soil does not have adequate bearing capacity, shifting and settlement will result. Quick calculations of the weight of the arch revealed an approximate bearing pressure of 5000 pounds per square foot. This is a moderately high value that could lead to problems if the soils were not of good quality.
2. *Frost heaving:* The depths of the footings are not know, but if they are less than 4 feet below grade, there would be a potential for frost heaving.
3. *Degradation of the foundation materials:* Monuments are typically founded on stone rubble footings. Many times these footings are built with low quality stone joined by lime mortar. The 130 years of exposure to moisture may have led to failure of the mortar and crushing of the joints. We have discovered this type of failure on a set of granite steps that were built in 1926 at the Webster, Massachusetts Town Hall.

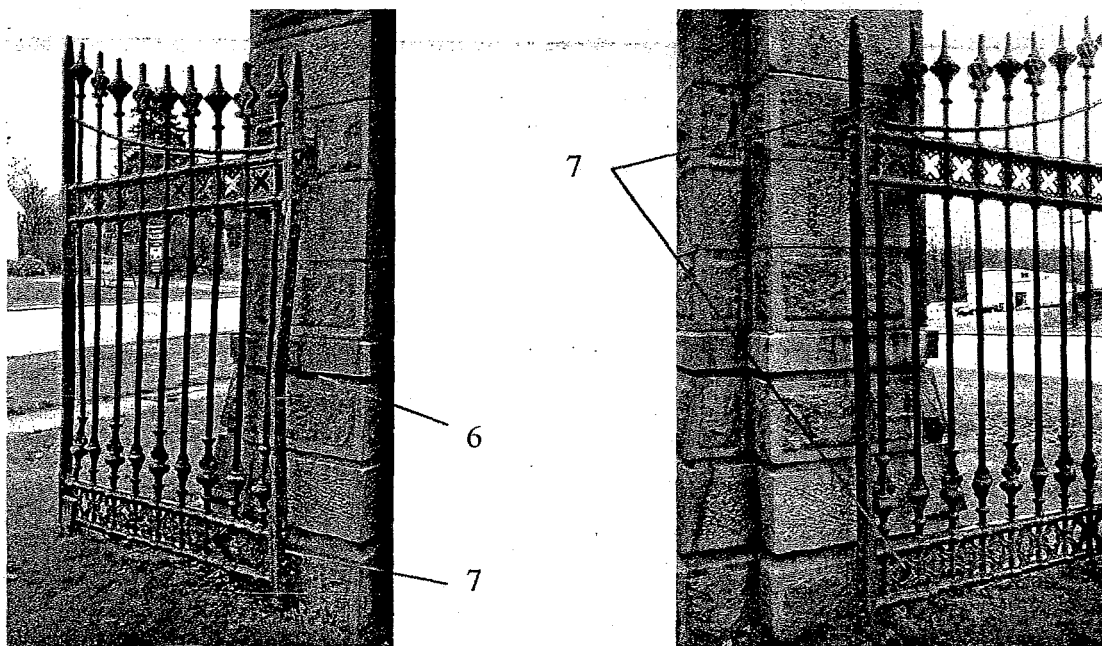
The grout joints in the arch appear to have been re-pointed at least two times. We managed to inspect a small portion of an open joint on the east post and found three different types of mortar. The deepest mortar appears to be a lime based mix. This would have been typical of what would be used in the 1870's. Cement based mortars were very new and expensive, and lime was plentiful at that time. There is a small repair on the east pedestrian portal that is tan in color (3). This appears to be a cement based mortar that was part of an early repair. The majority of the pointing is a gray cement based mortar that is used throughout the structure. The mortar joints are a bead type (4), which different from most mortar joints because they project out beyond the face



of the adjacent stone in a half round shape. This type of pointing is prone to water infiltration because the projections tend to attract water. The more common concave mortar joints are much more weather tight because they do not project beyond the face of the structure, and tend to shed wind driven rain water. We know that the grey mortar is not original because many of the open settlement joints are filled with this material (5).

The surface of the stone has moderate staining. The stains are a result of a combination of normal weathering, residue from adjacent trees, minor rusting of the gates, and minor efflorescence from the mortar. Efflorescence is a by product of a chemical reaction of the mortar and rain water.

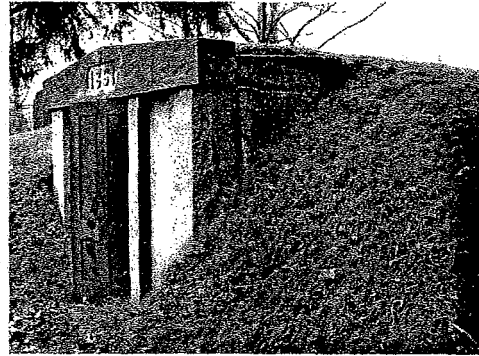
There are three gates on the arch. There is a double main gate in the center, and two single pedestrian gates on each side. These gates are constructed of mostly cast iron and a few pieces of wrought iron. The cast iron pieces are joined with vertical through rods that run from top to bottom. The gates are in fair condition overall. Typical damage consists of bent bars from snow plow impact (6) and broken and missing castings (7).



The paint on the gates is not original. A detailed paint analysis was not performed, but it appears that the original color was a light green. This color may have been meant to resemble a weathered copper patina.

EXISTING CONDITIONS OF THE TOWN TOMB

The Brookfield cemetery contains a small stone tomb. The tomb, which was built in 1861 is located just southwest of the entry gate. The entire tomb is constructed with cut granite blocks. The ceiling and walls are rough cut and the front façade has a smooth carved surface. The floor consists of brick pavers.



The interior walls and ceiling have been repointed several times. There is however, a large open joint between the front façade and the interior ceiling. This has allowed



water, insects and animals to enter the tomb for many years. Many insects and old animal nests were found in the tomb. There are some signs of minor movement, but it is not significant.

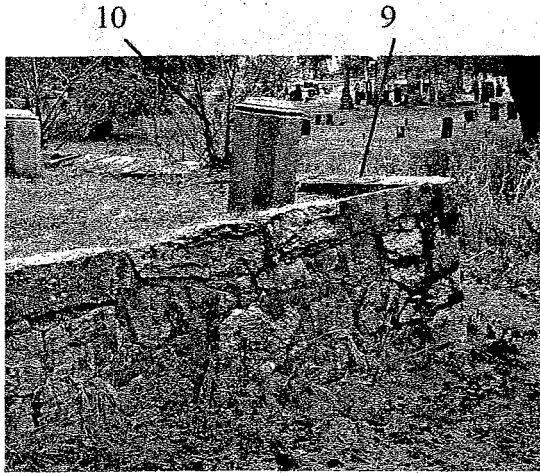
The front door is unusual in that it is most likely made of wrought iron, but has the appearance of a raised panel wood door. The door is in good condition, but the lockset is missing. The door has been catching on the stone jamb over the years, which has caused several large spalls of the exterior jamb (8).

EXISTING CONDITIONS OF RETAINING WALLS PLOT CURBING

The purpose of retaining walls is to provide relatively level ground where slopes exist. This is typically done in cemeteries to provide additional space for burials on uneven ground. The Brookfield Cemetery technically has three small retaining walls that are supporting embankments and gravesites. Two of the retaining walls surround the Kimball and Twichell family plots, and the third is a portion of the front wall that runs along the north edge of the cemetery. We refer to the front wall as a border wall because it is primarily functioning as a border that separates the cemetery from the State highway. This wall also functions as a retaining wall on the last 150 feet of the western end.

The following pages contain a brief report on the make-up and condition of each of the three retaining walls:

Kimball Plot Wall



This wall is a mortared cut stone structure that varies in height from one to four feet. The wall is constructed of stone masonry. This wall is in fair condition. The face of the wall has shifted outward, which is a sign of either inadequate design, or high soil pressures due to the presence of water. This type of shifting is technically categorized as a failure. Over time, this movement will get worse and eventually lead to collapse of the wall, however this is a very slow process. There are many cracks in the mortar joints which is another sign of continued movement of the wall.

There is a sinkhole located directly behind a portion of this wall (9). This is due to settlement of the soil behind the wall combined with the intrusion of ground and surface water. The sinkhole now collects more water, which accelerates the progressive failure of this wall. There are several small trees growing out of the face of the wall, which has displaced several stones (10). As the trees get larger, the damage to the wall will increase.

Twichell Plot Wall

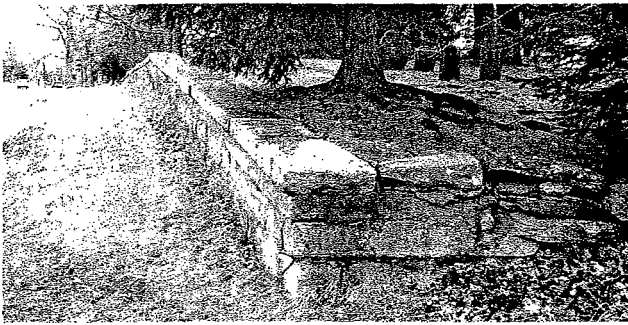
This stone retaining wall has an unusual design. Most stone retaining walls have either a vertical or slightly canted front face. This wall has a unique curved top surface, which softens the sometimes harsh appearance of a typical stone wall. The stones are rounded river cobbles that are joined by cement based mortar. The exact age of the wall is unknown.



There are several cracks in the mortar, but overall the wall is in very good condition. There are no signs of settlement or shifting. There is a minor sink hole in the southeast corner. The curved top of the wall leads us to believe that the wall is quite thick, which is probably why this wall has survived in such good condition. The mass of the wall is critical to its long term performance.

Front Border Wall

This wall is more of a boundary wall, than a retaining wall, but as previously stated, the western portion does support approximately three feet of soil. The intent of this wall is to delineate the cemetery from the highway. The wall is constructed of mortared stone masonry, with a cut granite cap. There are small portions of the wall that are partially collapsed, which allowed an inspection of the original construction. It appears that the original mortar for the wall was lime based.



The entire wall has been re-pointed at one time. There are signs of minor shifting and settling, and a few small areas are in poor condition, but the overall integrity of the wall is very good. At the extreme western end, the wall turns south and quickly turns into a field stone farm wall. This wall has collapsed and has been overgrown by vegetation. The extreme eastern end near the civil war memorial appears to have

been added at a later date. The stonework is slightly different, and the pointing is in much better condition.

Family Plot Curbing

Several of the family plots within the Brookfield Cemetery have stone curbing surrounding the gravesites. These curbs are intended to delineate the plots, provide an aesthetic border, and sometimes support minor amounts of soil. The curbs are primarily constructed with carved granite and marble. Some have small steps. The joints in most curbing are made up of lead sheet that is fit between the stones. Sometimes the stones are also joined with brass or copper pins. The curbing is generally only embedded several inches below the surface of the ground.



Most of the curbs are in very good condition, however all have some shifting and settling. The limited depth of the stones combined with the soil pressure behind leads to this movement. Many of the curbs catch surface water runoff, which exacerbates this problem. There are several curbs that have completely collapsed due to these problems (11).

CAUSE OF MOVEMENT RETAINING WALLS AND CURBING

As built plans do not exist for any of the walls, therefore, we cannot offer specific comments on the structural integrity of these structures. We can only comment on the information that we gathered during the site inspection. The most common causes of retaining wall failures are inadequate design, poor backfill soils, and excess ground water. The failures and leaning of the walls at the Brookfield Cemetery can be attributed to a combination of all of these causes.

Control of water is extremely important in order to provide a durable long lasting retaining wall. Water infiltration in the backfill soil of a wall can cause several problems:

1. The water will increase the unit weight of the soil, thereby increasing the pressures acting on the wall face.
2. If water is present in the backfill soil during freezing weather and if the backfill soil is not free draining, the soil will freeze and expand causing enormous pressures to build up.
3. Water will decrease the strength of the soil under the base of the wall and limit its ability to support loads.

There is very little control of surface and ground water on these walls. There are no signs of wall drains (weepholes) and the surface runoff is allowed to collect on top of many of the walls where the water can soak into the ground. These walls were probably not engineered. They were probably constructed by masons using a rule-of-thumb approach.

AREAS FOR PRESERVATION

The Twichell plot wall is in very good condition. This wall can be preserved by means of careful cleaning. The cleaning should not involve high pressure water blasting, or sand blasting. There are modern masonry cleaners that can remove dirt and grime without damaging the base material. More significant rehabilitation of this wall (see below) could be justified, but only if the condition of the wall changes over time.

AREAS FOR REHABILITATION

The investigation of the Kimball plot and front border walls brought out several key issues that will effect our recommendations for rehabilitation:

1. The walls were not properly designed from the beginning. The mass of the walls (thickness) is not sufficient to support the soil loading.
2. There is no drainage system present to redirect surface water above the walls, and remove ground water behind the walls.

At this time, we would not recommend replacing these walls since they are only leaning a few inches, and it will take many years for these walls to completely fail (if left as is). There are some measures that can be taken to minimize the long-term degradation of these walls if budgets permit:

Redirection of Surface Runoff

If possible, the flow of surface rainwater should be redirected away from the walls. This may not be viable since there are gravesites that cannot be disturbed by re-grading.

Replacement of Backfill Material

This is a very useful method of stabilizing a wall that may not have been properly designed. The backfill material directly behind the face of the wall can be removed and replaced with a lightweight high strength material such as expanded shale crushed stone.

We have recently calculated the effect of using this material for a memorial restoration at the Sleepy Hollow Cemetery in Concord, Massachusetts. The lightweight stone can reduce the soil pressures by a factor of two in some cases. This stone also has an added benefit, since it can allow water to pass through easily to either a drainage pipe, or weepholes. The stone backfill can be topped with 4 to 6 inches of topsoil that can support new plantings.

Installation of Ground Water Drainage

This can be done in several ways. Weep holes can be cored through the face of existing walls, however our experience is that this has a limited effect. Without well graded granular backfill material, the weepholes quickly plug with sediment. The best way to control ground water is to install weepholes during replacement of the backfill as outlined above.

Removal of Vegetation

The trees and shrubs that are growing out of the face of the Kimball plot wall should be removed including the root masses. This may require the removal and resetting of several adjacent stones

Re-pointing of the Front Border Wall

The overall integrity of the front border wall is good, however the mortar joints are in poor condition. This is not a structural problem, but it is an aesthetic one. The joints could be cleaned and properly re-pointed with a quality mortar. This process is very expensive, and would not result in a significant change to the appearance of the wall. The minor shifting and settling of the wall will also continue to cause these joints to crack. If the appearance of the wall was of concern, a possible solution would be to carefully dismantle the wall, remove the mortar, and reconstruct the wall without mortar. This would allow the wall to flex and bend with the settlement. Many border walls in New England were constructed without mortar, therefore the reconstruction would be historically accurate to the region.

AREAS FOR RESTORATION

Front Entrance Arch and Gates

The front arch has significant settlement problems that have led to several restoration projects over the years. The first of these projects was probably shortly after the arches were constructed, if settlement of the arch is the cause of the movement. If frost or degradation of the foundation materials is causing the problems, then the movement would have taken place over a longer period of time. In order to completely arrest the problems, the entire arch will need to be dismantled and reconstructed. We do not recommend this approach at this time due to the fact that the arch is still stable. If the movement continues, or if it accelerates, a complete reconstruction may be in order.

At this time the joints in the arch that have opened up can be re-pointed. A true historic restoration of the structure would require the removal of all the mortar, and replacement with a more historically accurately lime based mortar. We do not recommend that this action be taken because the movement problems are probably still ongoing. Any significant repair would be lost if the cracks re-opened. We recommend that the repaired joints be made to match the majority of the bead joints, in color, texture, and material.

The entire stone arch can be cleaned of all residue and stains. High pressure water blasting and sand blasting should not be used under any circumstances since it will damage the surface of the stone and mortar. There are several very good masonry cleaners that have been developed for cleaning historic structures. Any product that is used should be used in strict accordance with the manufacturer's recommendations. In addition, a small test area should be cleaned first in order to determine the effectiveness of the cleaner.

The iron gates can be removed and brought to a shop for restoration. The following restoration work can be done to bring these gates back to their original condition:

1. The rods that hold the gates together can be replaced if required.
2. The broken and missing castings can be replaced with new castings. The original pieces that remain can be used for the construction of new casts.
3. The paint can be completely removed. Care should be taken as the paint most likely contains lead. The color of the original paint can be determined and the finished gates can be re-painted with a modern paint system that matches the original color.
4. The bent plates can be straightened.
5. The gates can then be re-installed on the existing hinges.

Town Tomb

The tomb structure is in very good condition, with the exception of the leaks in the ceiling near the front façade. There is no reason why this structure could not be restored to its original condition. In order to eliminate the problems noted during the inspection, the following procedures should be followed:

1. The soil over the top of the tomb should be removed down to the base.
2. The gaps in the ceiling near the front façade can be mortared.
3. A quality waterproofing seal should be applied to the roof of the tomb.
4. A new drainage system should be installed around the perimeter in order to prevent ground water from percolating up through the floor.
5. The structure should then be backfilled with a quality soil that is not frost susceptible.
6. The front door can be cleaned and repainted. A historical lockset can be purchased and installed.
7. The damaged door jamb should not be repaired. A quality repair would be very difficult to execute and would detract from the historic character of the structure.

AREAS FOR RECONSTRUCTION

Reconstruct Failing Walls

Several portions of the front border wall will need to be reconstructed because several areas have collapsed. The extent of this work is very limited. As stated above, if there is interest in improving the appearance of this wall, then the wall could be completely dismantled and reconstructed in place without mortar. The existing stones could be re-used to produce a historically accurate reconstruction.

APPENDIX B: BIBLIOGRAPHY

Published Works

- Crane, E.B. History of Worcester County, Massachusetts. New York: 1924.
- Eddy, Charles W. Brookfield, Illustrated with Pen and Camera. Ware, MA: Charles W. Eddy, 1886.
- Foster, Roger. "Historical Address" in Charles J. Adams, ed. Quabaug 1660-1910: An Account of the Two Hundred-fiftieth Anniversary Celebration Held at West Brookfield, Mass., September 21, 1910. Worcester: Davis Press, 1915.
- Geib, Susan. Changing Works: agriculture and society in Brookfield, Massachusetts, 1785-1820. Ph.D. Thesis, Boston University, 1981.
- Jewett, C.F. History of Worcester County, Massachusetts, 2 vols. Boston: 1879.
- Kingsley, E. & F. Knab. Picturesque Worcester. Springfield, MA: 1895.
- LeBeau, Dennis. The Brookfields: from the collection of William Bullard/Dennis LeBeau. Dover, NH: Arcadia, 1996.
- Lewis, J.W. History of Worcester County, 2 vols. Philadelphia, 1889.
- Martin, Rev. Abijah P. "The Brookfields," in C.F. Jewett, History of Worcester County (Boston, 1879).
- National Park Service. National Register of Historic Places Registration Form: Brookfield Common Area,
- Nelson, John. Worcester County: A Narrative History. New York: 1934.
- Roy, Louis E. Quaboag Plantation alias Brookefield, A Seventeenth Century Massachusetts Town. West Brookfield, MA: Louis E. Roy, M.D., 1965.
- Systematic History Fund. Vital Records of Brookfield, Massachusetts to the end of the year 1849. Worcester: Franklin P. Rice; 1909.
- Temple, J.H. History of North Brookfield, 1647-1887. North Brookfield: Published by the Town, 1887.

Town of Brookfield, Massachusetts. Town Reports, 1843-2000.

Whiting, Lyman. "A Bicentennial Oration Made in West Brookfield, July 4, 1860 at the Celebration of the Two Hundredth Anniversary of the Settlement of the Town of Brookfield." West Brookfield: Thomas Morey, 1869.

Worcester County Registry of Deeds. Deeds and Plans.

Maps

Stebbins, H. Worcester from actual surveys made by Caleb Butler in 1825 and by H. Stebbins in 1831.

1855. Fagan, L. Map of Brookfield, West Brookfield and North Brookfield.

1857. Walling, Henry F. Map of Worcester County.

1870. Beers, F. W. (assisted by Geo. P. Sandford and others). Atlas of Worcester County, Massachusetts.

1885. Walker, Geo. H. & Co. Atlas of Brookfield, West Brookfield, and North Brookfield Towns, Massachusetts.

1893. Sanborn Fire Insurance Map.

1894. Richards, L. J. & Co., Atlas of Worcester County.

1898. Richards, L. J. & Co., Topographical Atlas of Worcester County.

1898. Sanborn Fire Insurance Map.

1904. Sanborn Fire Insurance Map.

1904. Walker, Atlas of Massachusetts.

1909. Walker, Atlas of Massachusetts.

1922. Walker, Atlas of Massachusetts.

1982. United States Geological Survey, Warren Massachusetts 1:25,000-scale metric topographic map.

1999. Town of Brookfield Assessors Maps. Original Issue 1968. Prepared by Avis Airmap, Brookline, Massachusetts. Maps 6B and 7B.

Photographs

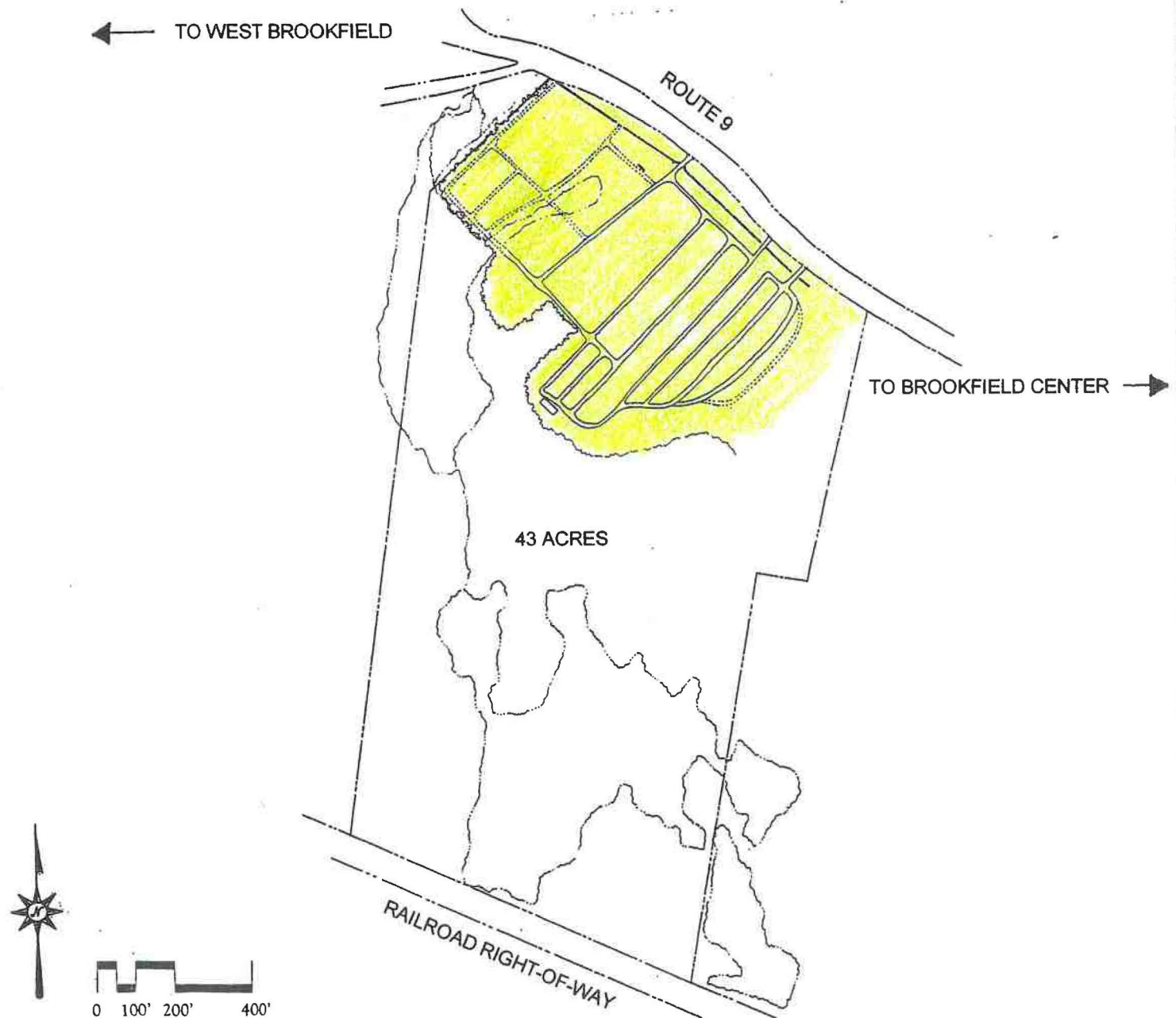
Col-East, Inc., 1971 aerial photograph from negative 15543-34, scale 1" = 600'.

Eddy Photograph Collection, Old Sturbridge Village.

Worcester Art Museum Photograph Collection.

LOCATION & SETTING

The Brookfield Cemetery covers approximately thirteen acres within a 43-acre parcel owned by the Town of Brookfield, Massachusetts. Brookfield's historic town center stands approximately one-half mile to the east, and the West Brookfield town line is one-half mile to the west. Massachusetts Route 9 forms the cemetery's northern edge, and an historic farm lies to the east. Marshy wetlands wrap around the western and southern edges, creating a picturesque setting to the town's only burying ground.



BROOKFIELD CEMETERY

Preservation & Management Plan

Brookfield, Worcester County, Massachusetts

Paysage

Landscape Architecture & Historic Preservation
313 Elm Street
Northampton, Massachusetts 01060

Plan

1

Landscape Assessment
EXISTING CONDITIONS

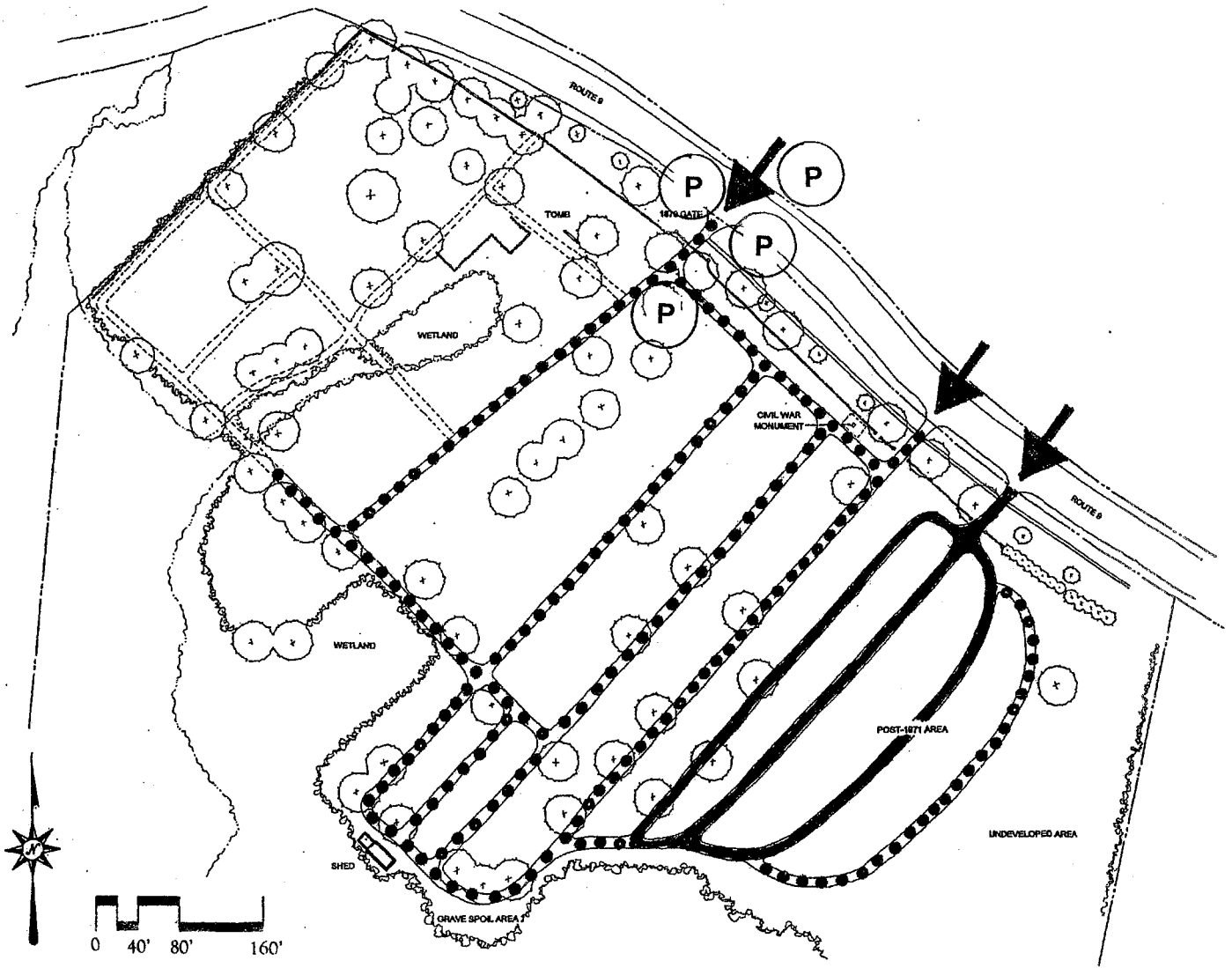
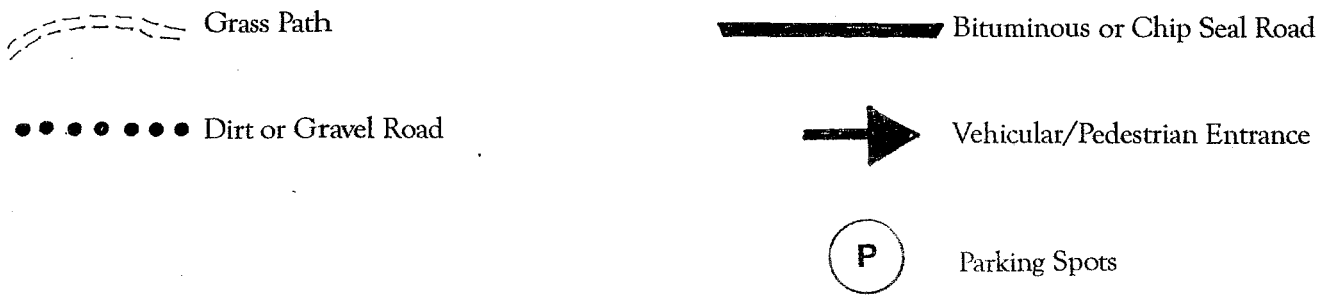
The cemetery's thirteen acres include a diversity of landform, plants and historic structures. Cemetery high points appear along the northern edge, and from these the topography rolls gently southward, meeting a wetland area at the southern edge. Dozens of historic trees, some reaching 60 inches in caliper, shade the cemetery's grassy burial areas. A wetland, rich in water-loving plant species, creates a distinctive feature in the cemetery's oldest section. Several stone retaining walls, a stone perimeter wall, a holding tomb, and the prominent entry gate further embellish the cemetery landscape.



BROOKFIELD CEMETERY
Preservation & Management Plan
Brookfield, Worcester County, Massachusetts

Paypage
Landscape Architecture & Historic Preservation
313 Elm Street
Northampton, Massachusetts 01060

Landscape Assessment
**PARKING, ENTRANCES,
 CIRCULATION & ACCESSIBILITY**

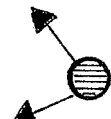
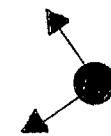


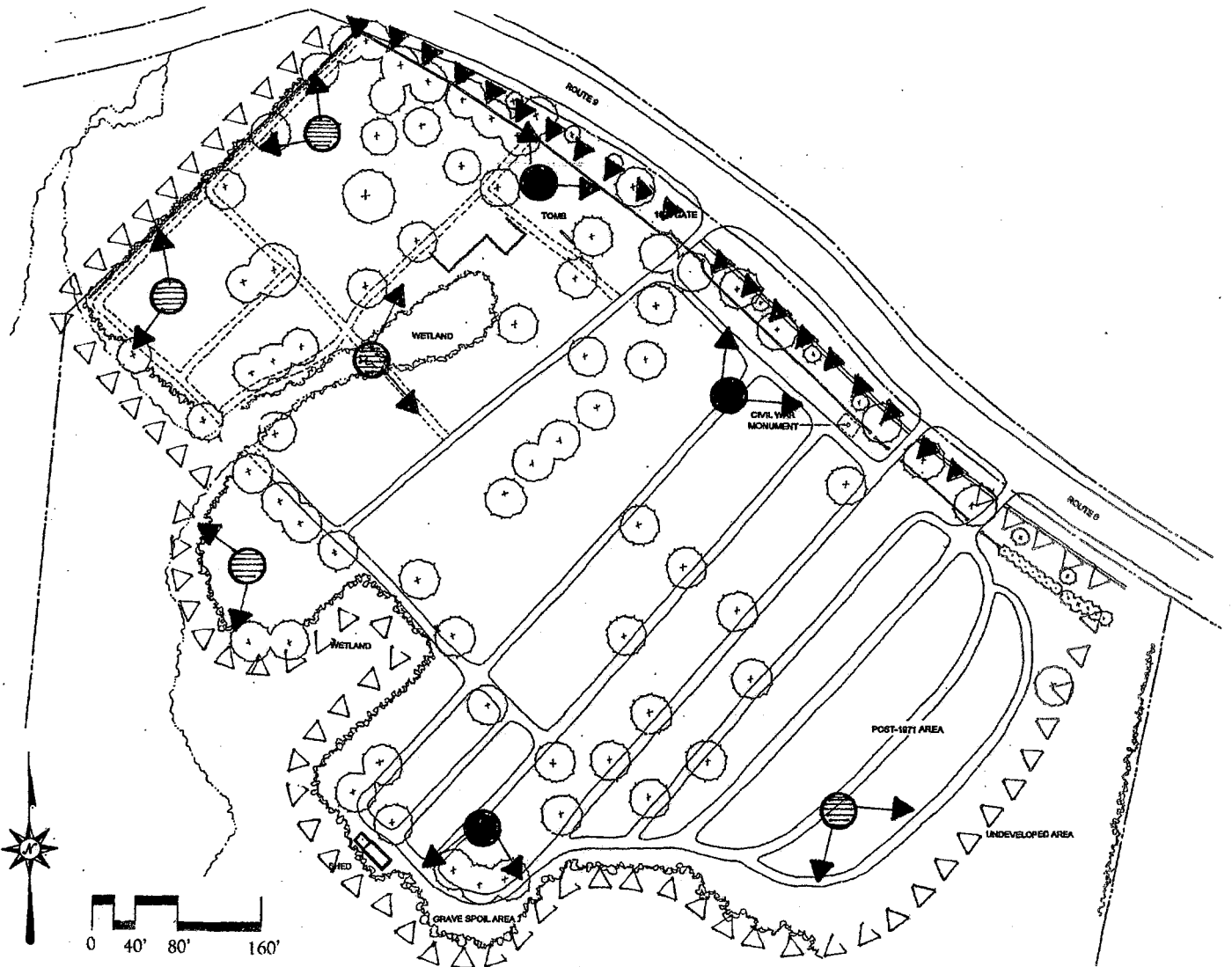
BROOKFIELD CEMETERY
Preservation & Management Plan
 Brookfield, Worcester County, Massachusetts

Paysage
 Landscape Architecture & Historic Preservation
 313 Elm Street
 Northampton, Massachusetts 01060

Landscape Assessment
CONTEXT & VIEWS

- △ △ △ △ △ Supportive Edges (Complement Historic Character)
- ▲ ▲ ▲ ▲ ▲ Unsupportive Edges (Detract from Historic Character)

-  Pleasant Views to be Retained and Enhanced
-  Unpleasant Views to be Improved



BROOKFIELD CEMETERY

Preservation & Management Plan

Brookfield, Worcester County, Massachusetts

Paysage

Landscape Architecture & Historic Preservation

313 Elm Street

Northampton, Massachusetts 01060

Plan

4

Landscape Assessment
VEGETATION

● Acer (Maple) - 49%

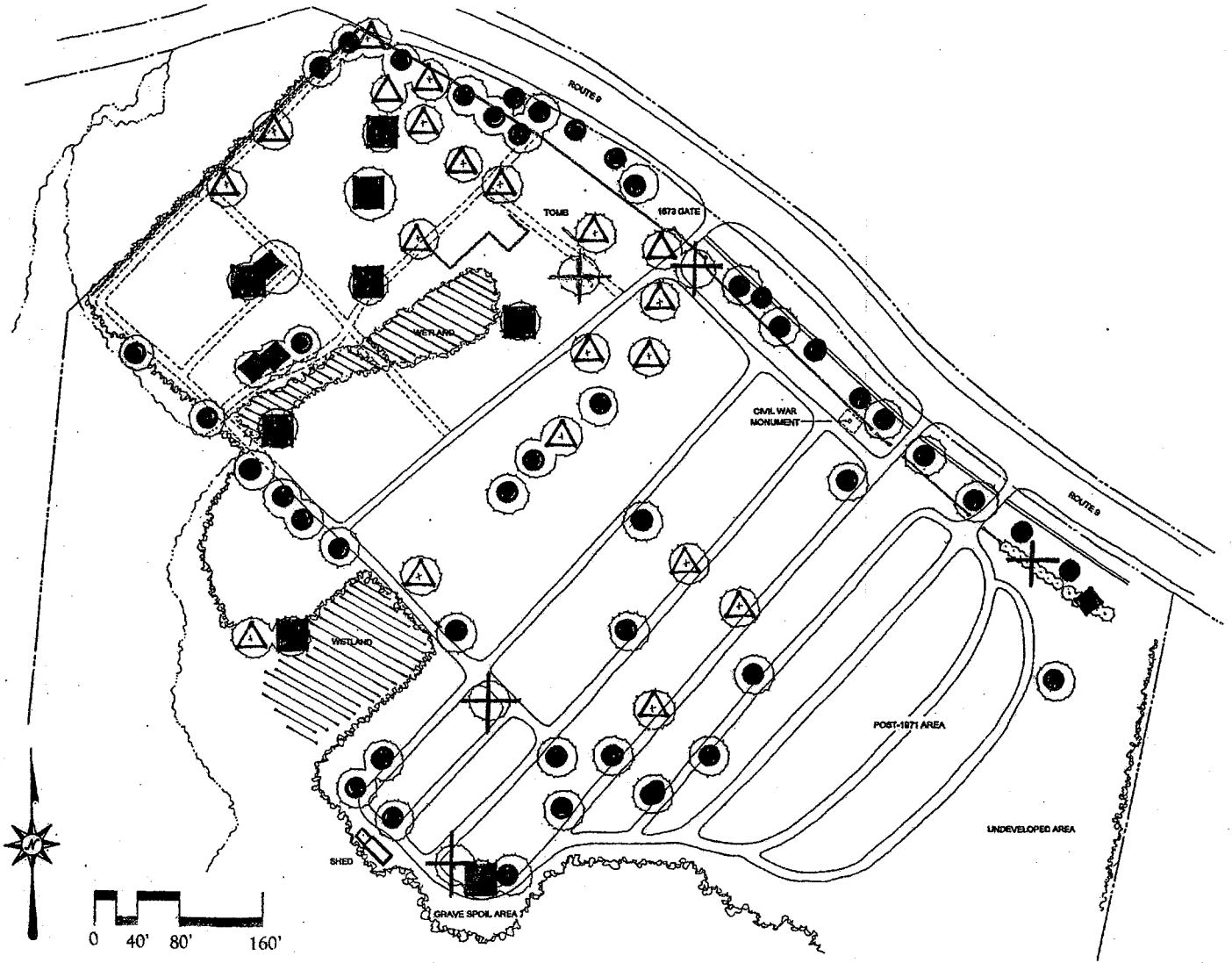
◆ Tsuga (Hemlock) - 8%

△ Picea (Spruce) - 21%

⊕ Other - 13%

■ Pinus (Pine) - 9%

▨ Wetland Vegetation Area



BROOKFIELD CEMETERY
Preservation & Management Plan
 Brookfield, Worcester County, Massachusetts

Paysage
 Landscape Architecture & Historic Preservation
 313 Elm Street
 Northampton, Massachusetts 01060

HISTORIC CEMETERY STYLES



Town Burial Ground (Before 1830)



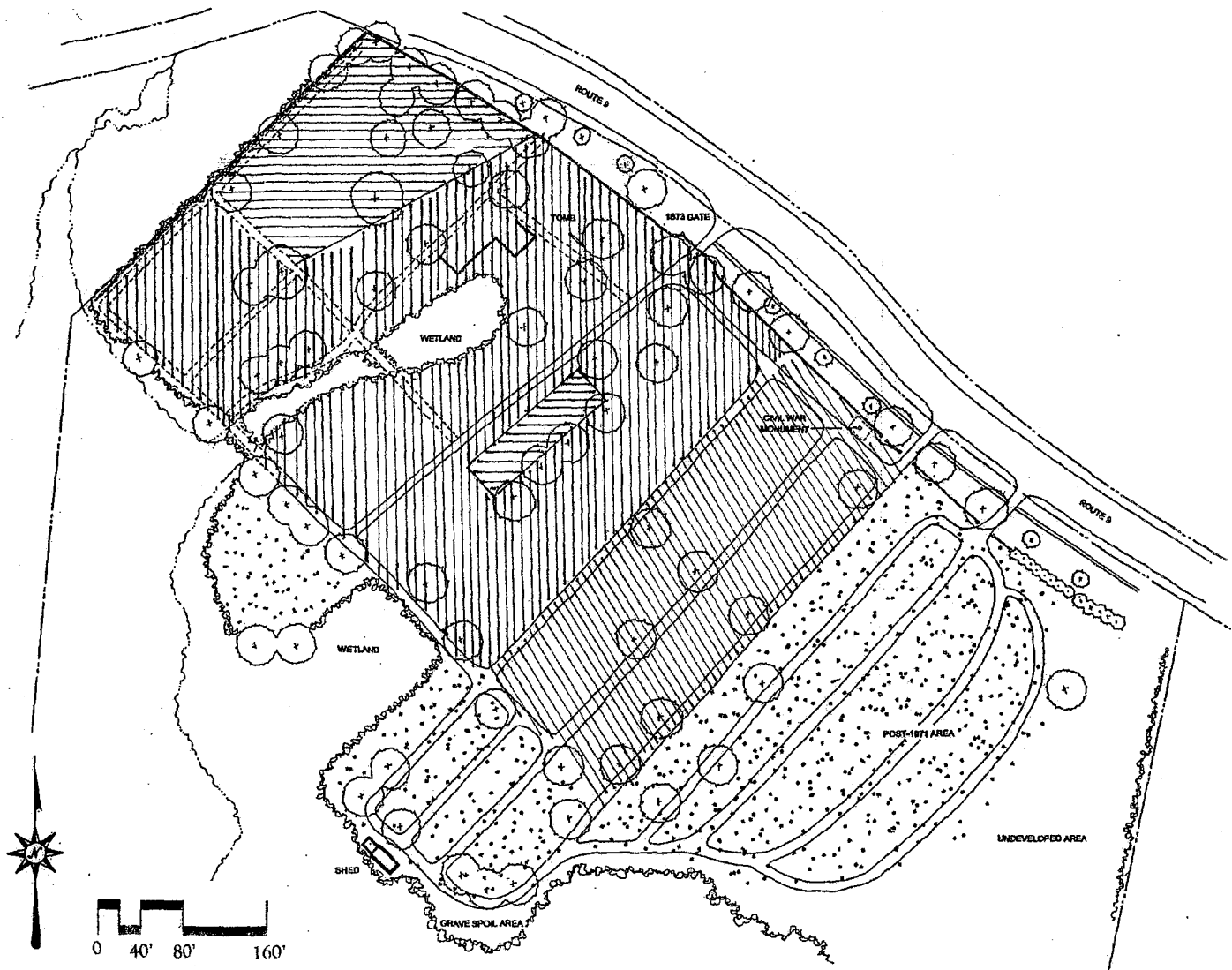
Late Victorian (1860-1900)



Early Victorian (1830-1859)



Modern (After 1900)



BROOKFIELD CEMETERY

Preservation & Management Plan

Brookfield, Worcester County, Massachusetts

Passage

Landscape Architecture & Historic Preservation

313 Elm Street

Northampton, Massachusetts 01060

Recommendations
PRESERVATION PLAN

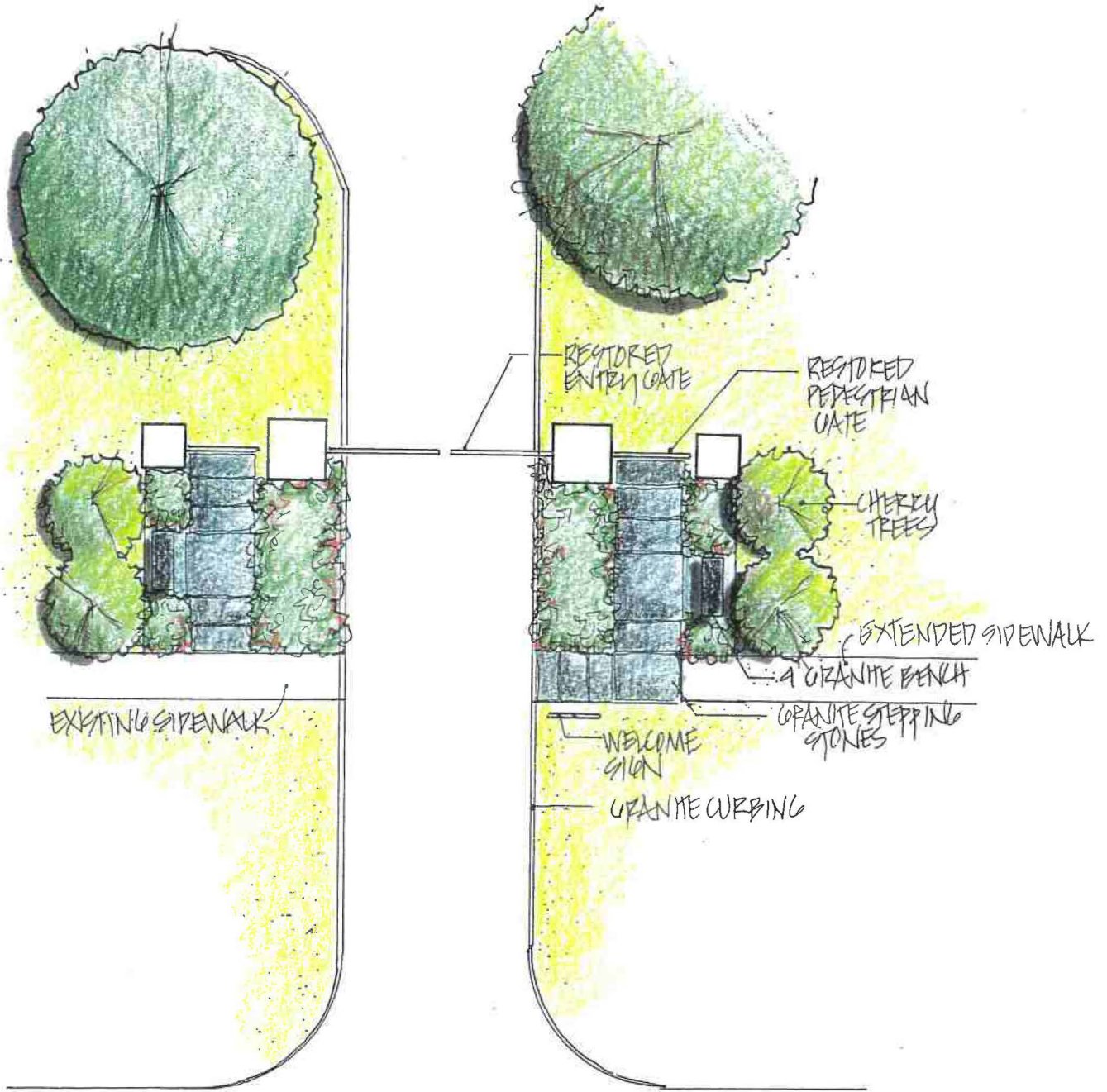


BROOKFIELD CEMETERY
Preservation & Management Plan
 Brookfield, Worcester County, Massachusetts

Passage
 Landscape Architecture & Historic Preservation
 513 Elm Street
 Northampton, Massachusetts 01060

Recommendations

1873 GATE & ENVIRONS



BROOKFIELD CEMETERY

Preservation & Management Plan

Brookfield, Worcester County, Massachusetts

Paysage

Landscape Architecture & Historic Preservation

313 Elm Street

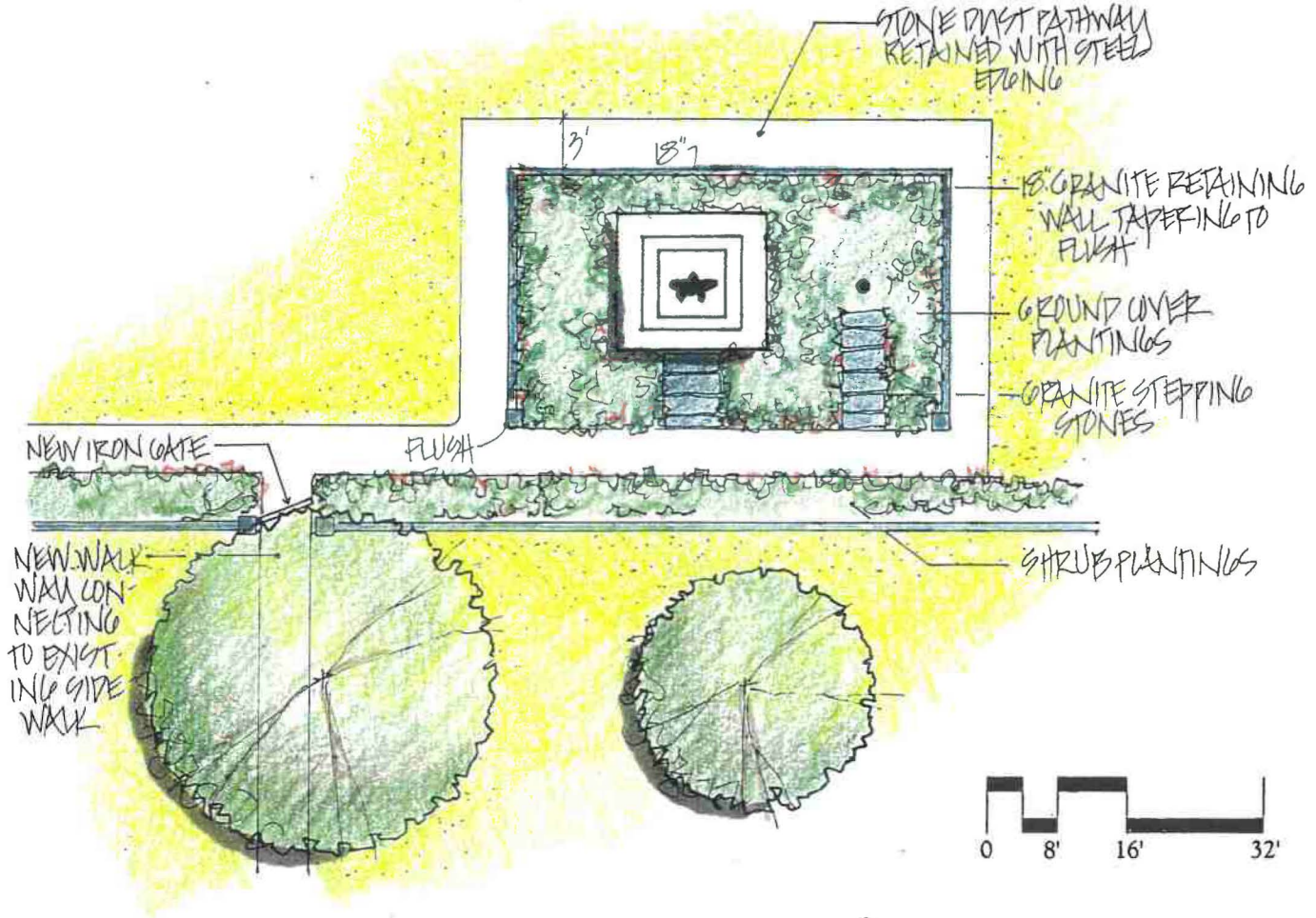
Northampton, Massachusetts 01060

Plan

8

Recommendations

CIVIL WAR MONUMENT & ENVIRONS



BROOKFIELD CEMETERY

Preservation & Management Plan

Brookfield, Worcester County, Massachusetts

Paysage

Landscape Architecture & Historic Preservation
313 Elm Street
Northampton, Massachusetts 01060

Plan

9

**United States Department of the Interior
National Park Service**

**National Register of Historic Places
Registration Form**

This form is for use in nominating or requesting determinations for individual properties and districts. See instructions in How to Complete the National Register of Historic Places Registration Form (National Register Bulletin 16A). Complete each item by marking "x" in the appropriate box or by entering the information requested. If any item does not apply to the property being documented, enter "N/A" for "not applicable." For functions, architectural classification, materials, and areas of significance, enter only categories and subcategories from the instructions. Place additional entries and narrative items on continuation sheets (NPS Form 10-900a). Use a typewriter, word processor, or computer, to complete all items.

1. Name of Property

historic name BROOKFIELD CEMETERY

other names/site number _____

2. Location

street & number MAIN ST. (Mass. Route 9) not for publication

city or town BROOKFIELD N/A vicinity

state MASSACHUSETTS Code MA county WORCESTER code _____ zip code 01506

3. State/Federal Agency Certification

As the designated authority under the National Historic Preservation Act of 1986, as amended, I hereby certify that this nomination request for determination of eligibility meets the documentation standards for registering properties in the National Register of Historic Places and meets the procedural and professional requirements set forth in 36 CFR Part 60. In my opinion, the property meets does not meet the National Register Criteria. I recommend that this property be considered significant nationally statewide locally. (See continuation sheet for additional comments.)

Signature of certifying official/Title Cara Metz, Executive Director
Massachusetts Historical Commission, State Historic Preservation Officer

Date _____

State or Federal agency and bureau _____

In my opinion, the property meets does not meet the National Register criteria. (See continuation sheet for additional Comments.)

Signature of certifying official/Title _____

Date _____

State or Federal agency and bureau _____

4. National Park Service Certification

I hereby certify that this property is:

Signature of the Keeper _____

Date of Action _____

- entered in the National Register
 - See continuation sheet.
- determined eligible for the National Register
 - See continuation sheet.
- determined not eligible for the National Register
- removed from the National Register
- other (explain): _____

BROOKFIELD CEMETERY

Name of Property

BROOKFIELD, WORCESTER COUNTY, MA

County and State

5. Classification

Ownership of Property

(Check as many boxes as apply)

(Check only one box)

- private
- Public-local
- public-State
- public-Federal

- building(s)
- district
- site
- structure
- object

Number of Resources within Property

(Do not include previously listed resources in the count.)

Contributing	Noncontributing	
0	1	building
38	0	sites
8	0	structures
59	0	objects
105	1	Total

Name of related multiple property listing

(Enter "N/A" if property is not part of a multiple property listing.)

N/A

Number of contributing resources previously listed in the National Register

N/A

6. Function or Use

Historic Functions

(Enter categories from instructions)

FUNERARY: Cemetery

Current Functions

(Enter categories from instructions)

FUNERARY: Cemetery

7. Description

Architectural Classification

(Enter categories from instructions)

Other: Cemetery

Materials

(Enter categories from instructions)

foundation _____
walls _____
roof _____
other STONE: granite, slate, sandstone, marble
METAL: iron, zinc

Narrative Description

(Describe the historic and current condition of the property on one or more continuation sheets.)

(Please refer to continuation sheets)

BROOKFIELD CEMETERY

Name of Property

BROOKFIELD, WORCESTER COUNTY, MA

County and State

8. Statement of Significance

Applicable National Register Criteria

(Mark "X" in one or more boxes for the criteria qualifying the property for National Register listing.)

- A** Property is associated with events that have made a significant contribution to the broad patterns of our history.
- B** Property is associated with the lives of persons significant in our past.
- C** Property embodies the distinctive characteristics of a type, period, or method of construction or represents the work of a master, or possesses high artistic values, or represents a significant and distinguishable entity whose components lack individual distinction.
- D** Property has yielded, or is likely to yield, information important in prehistory or history.

Criteria Considerations

(Mark "X" in all the boxes that apply.)

Property is:

- A** owned by religious institution or used for religious purposes.
- B** removed from its original location.
- C** a birthplace or grave.
- D** a cemetery.
- E** a reconstructed building, object, or structure.
- F** a commemorative property.
- G** less than 50 years of age or achieved significance within the past 50 years.

Areas of Significance

(Enter categories from instructions)

- ARCHITECTURE**
- COMMUNITY PLANNING & DEVELOPMENT**
- LANDSCAPE ARCHITECTURE**
- SOCIAL HISTORY**

Period of Significance

1714-1952

Significant Dates

1714

1861

1920

Significant Person

(Complete if Criterion B is marked above)

N/A

Cultural Affiliation

N/A

Architect/Builder

Narrative Statement of Significance

(Explain the significance of the property on one or more continuation sheets)

9. Major Bibliographical References

(Cite the books, articles, and other sources used in preparing this form on one or more continuation sheets.)

Previous documentation on file (NPS):

- preliminary determination of individual listing (36 CFR 67) has been requested
- previously listed in the National Register
- previously determined eligible by the National Register
- designated a National Historic Landmark
- recorded by Historic American Buildings Survey # _____
- recorded by Historic American Engineering Record # _____

Primary location of additional data:

- State Historic Preservation Office
- Other State agency
- Federal agency
- Local government
- University
- Other

Name of repository:

BROOKFIELD CEMETERY

Name of Property

BROOKFIELD, WORCESTER COUNTY, MA

County and State

10. Geographical DataAcreage of Property 43 acres**UTM References See continuation sheet.**

(Place additional UTM references on a continuation sheet)

1. Zone 18 Easting 738320 Northing 4677780

2. Zone 18 Easting 738400 Northing 4677710

3. Zone 18 Easting 738300 Northing 4677600

4. Zone 18 Easting 738060 Northing 4677350

5. Zone 18 Easting 738000 Northing 4677400

_ See continuation sheet

Verbal Boundary Description

(Describe the boundaries of the property on a continuation sheet.)

see attached

Boundary Justification

(Explain why the boundaries were selected on a continuation sheet.)

see attached

11. Form Prepared Byname/title Martha Lyon, Larry Lowenthal, & Gregory Farmer (consultants) with Betsy Friedberg, NR Director, MHCorganization Massachusetts Historical Commissiondate June 2002street & number 220 Morrissey Boulevardtelephone 617-727-8470city or town Bostonstate Massachusettszip code 02125-3314**Additional Documentation**

Submit the following items with the completed form:

Continuation Sheets**Maps**

A USGS map (7.5 or 15 minute series) indicating the property's location.

A sketch map for historic districts and properties having large acreage or numerous resources.

Photographs - Representative black and white photographs of the property.**Additional items** (Check with the SHPO or FPO for any additional items)**Property Owner**

(Complete this item at the request of the SHPO or FPO.)

name Town of Brookfieldstreet & number Town Halltelephone 508-867-8004city or town Brookfieldstate MAzip code 01506**Paperwork Reduction Act Statement:** This information is being collected for applications to the National Register of Historic Places to nominate properties for listing or determine eligibility for listing, to list properties, and to amend existing listings. Response to this request is required to obtain a benefit in accordance with the National Historic Preservation Act, as amended (16 U.S.C. 470 et seq.).**Estimated Burden Statement:** Public reporting burden for this form is estimated to average 18.1 hours per response including the time for reviewing instructions, gathering and maintaining data, and completing and reviewing the form. Direct comments regarding this burden estimate or any aspect of this form to the Chief, Administrative Services Division, National Park Service, P.O. Box 37127, Washington, DC 20013-7127; and the Office of Management and Budget, Paperwork Reductions Project (1024-0018), Washington, DC 20503.

**United States Department of the Interior
National Park Service**

**National Register of Historic Places
Continuation Sheet**

Section number 7 Page 1 Brookfield Cemetery
Brookfield, Worcester County, MA

NARRATIVE DESCRIPTION

The Brookfield Cemetery is the town's primary secular burial ground and represents an essential community function with a continuous history of use from 1714 to the present. The cemetery retains a high degree of integrity in its location, design, setting, materials, workmanship, feeling, and association and meets National Register Criteria A and C at the local level. The Brookfield Cemetery derives its primary significance from the distinctive 18th & 19th century grave markers and from the association of the cemetery with the development and history of the town.

Location & Setting

The Brookfield Cemetery occupies a gently sloping site overlooking the Quaboag River, one-half mile west of the town common in Brookfield Center. The 43-acre parcel is roughly rectangular and extends from US Route 9 (West Main Street) on the north to the Conrail railroad tracks on the south. Since the rear of the parcel is very marshy, only the northern portion has been developed and used for burials.

The cemetery is set in a rural/suburban corridor defined by Massachusetts Route 9 (West Main Street), a two-lane undivided road whose original layout followed the outline of a pre-colonial trail. Directly north of the cemetery on the opposite side of West Main Street is a mix of light residential and commercial development along the travel corridor. To the east, the residential development becomes more dense as it approaches the village center (0.5 miles).

Wetlands cover both the south and west sides of the cemetery, providing a rich natural context. Forested wetlands, including birch, hemlock and fern, lie at the higher elevations close to the cemetery edges, providing a tall, dense boundary. As the lands drops away from the cemetery, wet meadows of grasses, sedges and rushes prevail. The undeveloped meadows extend southward to the Quaboag River, interrupted only by the Conrail tracks lining the river edge.

United States Department of the Interior
National Park Service

National Register of Historic Places
Continuation Sheet

Section number 7 Page 2 Brookfield Cemetery
Brookfield, Worcester County, MA

Site and Layout

Boundaries & Entrances

The cemetery is separated from the adjacent roadway by a low fieldstone wall along the north boundary, interrupted by three vehicle entrances and two pedestrian entrances. The western boundary is marked by a partial stone wall and a dense evergreen hedgerow, while a second shorter evergreen hedgerow extends east of the stone wall. The southern boundary is marked by dense brush of recent growth. The eastern boundary is unmarked and extends to the open lawn of the adjacent residential property.

The low fieldstone wall that defines the north boundary features a granite coping and granite posts at each entry point. Iron pin hinges are fixed in the granite posts at some locations, but the gates themselves remain only on the primary entrance.

The easternmost entrance in the north wall is a small pedestrian passage formerly fitted with an iron gate. The gate is missing, but entry to the oldest part of the cemetery is further narrowed by two granite posts set in the opening of the wall. A grassy footpath is barely discernible at the pedestrian entry.

The primary entrance in the north wall is marked by a rusticated granite arch fitted with iron gates (Photo #1). The form of the arch is Romanesque with the large center opening for vehicles flanked by two smaller pedestrian entries. The top of the arch supports two large draped urns in granite. Between them is a carved tablet with the dedication date (1873) and the legend:

"until the day breaks and the shadows flee away"

Above the side arch is a second inscription:

"presented to the Town of Brookfield by W. A. Banister and Otis Hayden"

A roadway of compacted dirt (Photo #2) passes under the arch and then branches out to the south and east, and a second vehicle entry lies at a break in the stone wall just east of the Civil

United States Department of the Interior
National Park Service

National Register of Historic Places
Continuation Sheet

Brookfield Cemetery

Section number 7 Page 3 Brookfield, Worcester County, MA

War monument (Photo #4). An asphalt roadway leads south from the entry to the tool shed at the back of the cemetery. A third vehicle entry is located at a break in the stone wall near the eastern end, while an asphalt drive at the entry splits into four narrow roads that serve the eastern expansion of the cemetery.

Topographical and Landscape Features

The Brookfield Cemetery is divided by a system of paths and roadways that facilitate access to the burial sites. There are three major north-south roads (each related to a vehicle entrance in the stone wall) and seven smaller north-south paths. In addition, there is a primary east-west roadway connecting the north-south routes along the southern edge of the cemetery and a secondary east-west path that crosses the older (west) section of the cemetery.

The site itself slopes gently from west to east and from north to south. A grassy marsh extends along the eastern edge of the oldest (18th century) section and adjacent burials are supported by a stone retaining wall. The stone vault (1861) which served as a temporary repository for burials is built into the knoll at the head of the marsh. Mature trees include oak, maple, hemlock, and pine. The paths and roadways are grass or dirt in the western (18th century) and central (19th century) sections, and asphalt or gravel in the eastern (20th century) section.

Within the older sections of the cemetery, the mounded burials and family plots are significantly higher than the adjacent compacted roadways. In the newer (20th century) sections, the burials and roadways maintain a more consistent topography.

A small level parking area was created by filling and grading the south end of the cemetery in 1962. The adjacent tool shed, a one-story wood frame structure set on blocks, was erected in 1975 to replace an earlier building nearby (now demolished). A concrete sidewalk was installed between the north wall and the main road (Route 9) in 1965. A steel flagpole was installed adjacent to the Civil War monument in 2000, replacing a similar pole installed in 1933.

**United States Department of the Interior
National Park Service**

**National Register of Historic Places
Continuation Sheet**

Brookfield Cemetery

Section number 7 Page 4 Brookfield, Worcester County, MA

The undeveloped southern section of the cemetery (roughly 2/3 of the parcel) is a low flood plain with streams, marshes, and areas of exposed bedrock. Small streams meander through cattails, dense brush and young trees, but the undeveloped section is devoid of significant landscape features and displays no evidence of historical use.

Expansion Sequence

The cemetery shows evidence of expansion in three stages, each roughly equal in size. The system of roadways and paths encompasses all sections and there are no fences, walls, or other distinct separations delineating each area. All three sections of the cemetery are still in active use, although burials in the older areas are limited by space.

The colonial burying ground for the Town of Brookfield was established in 1714 and was defined in 1756 as a five acre lot (the westernmost third of the current developed area). The old burying ground is slightly higher in elevation than the rest of the cemetery due to natural topography and the density of burials. The area is bordered by the stone wall on the north, a retaining wall overlooking the wetland on the east, undeveloped land (brush and trees) on the south, and a hedgerow and partial stone wall on the west. Grass paths roughly outline the perimeter of the burying ground and bisect at the center. Burials are mostly arrayed in north-south rows and are marked by vertical stone slabs 1 foot to 4 feet high with carving on one side. A few obelisks, one table stone, and one small tomb are situated at the northeast corner of the section overlooking the town vault and the wetlands. There are a few delineated family plots and family members in non-delineated plots are also buried in close proximity. Large areas of the old burying ground are unmarked, suggesting that some of the older markers may have deteriorated, collapsed, or been removed or buried over time, or that graves may never have been marked at all.

The middle section of the cemetery (Photo #3), characterized by small knolls and terraces and a greater variety of monuments, was developed in the picturesque manner of a "garden"

United States Department of the Interior
National Park Service

National Register of Historic Places
Continuation Sheet

Section number 7 Page 5 Brookfield Cemetery
Brookfield, Worcester County, MA

cemetery after 1861 and includes a prominent Civil War memorial (dedicated 1890) (Photo #4). The section is bordered by the entry gate and stone wall on the north, the Civil War monument and adjacent asphalt roadway on the east, the maintenance and parking areas on the south, and the compacted dirt roadway and adjacent wetlands on the west. Two secondary dirt and grass roadways run north-south (parallel to the perimeter roadways), dividing the section roughly into thirds. The topography slopes gently to the south and west with burials arrayed in north-south rows and in rectangular family plots delineated by posts and curbing. The types of markers are more varied and include vertical tablets and slabs, rectangular headstones, columns, and obelisks, ranging from a few inches to twelve feet in height. Most of the markers in the middle section are marble or granite, although there are a few zinc and pressed metal monuments.

The easternmost section was developed in the 1920s and expanded in 1937, 1941-42, 1952, and 1996. It is much flatter than the other sections and represents the aesthetic of the Modern Cemetery movement of the early 20th century. The section is bordered by the stone wall and hedgerow on the north, an open field on the east, a maintenance and spoils area on the south, and an asphalt roadway on the west. Four secondary roadways run north-south through the section to facilitate access to the burial sites. The burials are arrayed in north-south rows facing the adjacent roadways (east or west). There are several family plots marked by a common monument flanked by secondary stones. Most of the markers in the eastern section are granite blocks one to four feet high, but there are also many flat stones set flush with the lawn.

Burials are mixed throughout the Brookfield Cemetery with a great deal of variation in the size and orientation of plots. There are no areas specifically designated for veterans, children, non-Christians, or cremated remains, but the chronology of burials results in some noticeable clusters (e.g., war casualties). Family plots (often including several generations of an extended family) and sequential burials are characteristic throughout the cemetery.

One undated partial plan of the cemetery (probably c. 1930) shows a small "Town Lot" at

United States Department of the Interior
National Park Service

National Register of Historic Places
Continuation Sheet

Section number 7 Page 6 Brookfield Cemetery
Brookfield, Worcester County, MA

the southeast corner of the wetlands that may have been reserved for paupers and transients. Since there are no visible markers on the lot, the number of burials is currently unknown.

Markers and Monuments

N.B.: Reference to particularly significant markers and monuments is hampered by the lack of a consistent system for designating roadways and burial plots in the Brookfield Cemetery, but the developed area of the cemetery is small enough that most key stones can be located on the basis of a general directional reference. Please refer to the District Data Sheet for details.

By virtue of its geographic location in the center of the state, Brookfield absorbed burial practices and carving styles from several distinct cultural regions in the 18th century. The older section of the Brookfield Cemetery includes gray slate markers from the coastal region of eastern Massachusetts, brown sandstone markers from the Connecticut River Valley of western Massachusetts and central Connecticut, and markers of granite, schist, and quartzite from the quarries of central Massachusetts and eastern Connecticut.

The carvings on 18th century gravestones are somewhat idiosyncratic, although they share a common style and vocabulary derived from English Puritan theology and culture. The most common motifs carved on the 18th century gravestones in Brookfield are meandering vines (representing eternal life and persistent memory), skulls and death's heads (memento mori), and soul effigies in the form of stylized heads with wings and/or crowns (representing salvation and the eternity of the soul). Some of the stones are engraved with inspirational verse as well as iconographic motifs. The following characteristic example marks the grave of Lucy Williston (d. 1782):

*Sleep precious dust while here confined in Earth
Till the glad spring of nature's second Birth
Then quit the transient winter of the Tomb*

United States Department of the Interior
National Park Service

National Register of Historic Places
Continuation Sheet

Section number 7 Page 7 Brookfield Cemetery
Brookfield, Worcester County, MA

And rise and flourish in immortal Bloom

The earliest 19th century gravestones in the Brookfield Cemetery retain the basic form and carving style of 18th century prototypes, but the vogue for neoclassical iconography is evident. Several gray slate slabs maintain the traditional form and profile, but are carved with motifs of willows (representing life and memory) and urns (representing the vanity of earthly life).

Interments from the period 1810-1880 are almost all marked by white marble gravestones and monuments (Photo #'s 5 and 6). The change in material represents a clear stylistic preference, but also the development of native quarries in western Massachusetts and Vermont and the development of more extensive trade networks (particularly after completion of the Western Railroad in 1840). The upright slab style of marker quickly lost favor and most new burials were marked with a simple marble tablet. The vocabulary of mourning in the 19th century burials is more conventional with pedestals, columns, shafts, obelisks, and three-dimensional urns (draped or undraped) inscribed with family information and sentimental verses. Urns and willows predominate, but other motifs include the pointing hand (a reference to the heavenly destination) and the seated lamb (commonly used to mark the children's burials, but also a reference to Christ).

While the monumental entry gate of 1873 represents the peak of the sculptural style in the Brookfield Cemetery, the dedication of the Civil War monument in 1890 represents the end of that phase. The free-standing cast metal monument consist of a high polygonal base with dedications and memorial tablets affixed to each face. A tall square column rising from the base supports a three-dimensional figure of a Union sentinel.

After 1890, the burials in the Brookfield Cemetery are marked by conventional headstones of black, gray, or red granite (polished or unpolished) and by low tablets set flush with the ground. The majority of late 19th and 20th century stones are inscribed with the name of the deceased, the birth and death dates, and familial relationships (e.g. "Beloved Mother"). A small

**United States Department of the Interior
National Park Service**

**National Register of Historic Places
Continuation Sheet**

Brookfield Cemetery

Section number 7 Page 8 Brookfield, Worcester County, MA

number of stones are inscribed with verses, tributes, or decorative motifs.

The only vault tomb in the Brookfield Cemetery is the town vault (1861), which was used to hold remains in winter while awaiting burial. The town vault is a simple cavity set into the knoll of the northwest section of the cemetery. The face and roof are carved granite and an iron door is attached at the front. The lintel above the door is inscribed with the date of construction (1861). The side and back of the vault are covered by the knoll.

Significant Burials

The Brookfield Cemetery is the final resting place of numerous individuals who played significant roles in Brookfield history. (Please refer to Section 8 for additional biographical details.) At least five Congregational ministers are buried in the Brookfield Cemetery. The most notable are Rev. Thomas Cheney (d. 1747, ae 57), who was pastor for more than 30 years, Rev. Jabez Upham (d. 1760 and honored with the only table stone in the cemetery), and the Rev. Nathan Fiske (d. 1799, ae 67), who passed away in his 42nd year of ministry to the 3rd Church (Brookfield Center).

Veterans of the Revolutionary War are buried throughout the 18th and 19th century sections of the cemetery. Among them are Colonel James Converse (d. 1811), Colonel Seth Banister (d. 1819), and Jason Walker (d. 1843).

Casualties of the Civil War are buried throughout the central 19th century section and in family plots in the older northwest section. Two hundred sixty-six Brookfield volunteers served in the Civil War and thirty-eight were killed in action or died from injuries. Among them were James K. Sargent (d. 1862 at Antietam, ae 19), John C. McClure (d. 1863 at Alexandria, ae 21), Corp. Henry W. Watson (d. 1864 at Richmond, ae 19), and Abner Wolcott (d. 1867) whose grave stone lies adjacent to the Civil War monument.

Community leaders from all periods of Brookfield history are also interred in the

United States Department of the Interior
National Park Service

National Register of Historic Places
Continuation Sheet

Brookfield Cemetery

Section number 7 Page 9 Brookfield, Worcester County, MA

cemetery. Among the many notable names are eminent attorney Pliny Merrick (d. 1814), the Hon. Oliver Crosby (d. 1818), Dr. Tilly Rice (d. 1824), and the leading benefactors of the cemetery expansion, Otis Hayden (d. 1872) and William A. Banister (1890).

Also scattered throughout the cemetery are records of unusual deaths and notable events. The death of Margaret Bromfield from smallpox (1761) recalls one of the persistent plagues of the early settlement. The notorious murder of Joshua Spooner (d. 1778) is recalled by the inscription on a modern stone which now marks his grave:

Joshua Spooner, murdered March 1, 1778 by three soldiers of the Revolution, Ross, Brooks and Buchanan, at the instigation of his wife Bathsheba. They were all executed at Worcester, July 2, 1778

(Spooner's mutilated body was stuffed down the well and later retrieved. To this day, no grass will grow on his grave.)

Photography and Publication

Photographic records of significant stones in the Brookfield Cemetery are a particularly rich source of documentation. Several of the Brookfield grave markers have been described and illustrated in standard reference works. The stones selected for photography and publication are mostly 18th century stones by known carvers with representative or characteristic iconographic motifs. Since many of the stones have become less legible over time, the photographs are the most reliable source for study.

The seminal publication by Harriette M. Forbes, Gravestones of Early New England (1927) includes several Brookfield examples:

Joseph Ayres	1740	by William Young	(not illus.)
Joshua Nichols	1759	by William Young	(opposite p. 76)
Robert Cutler	1760/61	by William Young	(opposite p. 76)
Sarah Moore	1761	by William Young	(opposite p. 80)

United States Department of the Interior
National Park Service

National Register of Historic Places
Continuation Sheet

Section number 7 Page 10 Brookfield Cemetery
Brookfield, Worcester County, MA

The fundamental reference on New England gravestones is Dr. Alan Ludwig's Graven Images (1966). The third edition (1999) includes examples of several gravestones from Brookfield:

Robert Cutler	1761	by William Young	(pl. 118B)
Ephraim Walker	1777		(pl. 89)
Samuel & Mary Hinckley	1792		(pl. 88 A&B)
Dorothy Walker	1804		(pl. 48A)

Another standard reference, Chase & Gabel's Gravestone Chronicles (1997) includes a footnote reference to one Brookfield example (p. 175, not illus.):

Mary Cheney	1764	by Ebenezer Howard
-------------	------	--------------------

American Heritage Magazine (February 1960, p. 41) includes a photograph of a Brookfield stone with an angel motif.

There are also repositories of unpublished photographs of Brookfield gravestones. The H.M. Forbes Collection of Gravestone Photographs at the American Antiquarian Society, Worcester, Massachusetts, includes many of the images used in Gravestones of Early New England (1927) as well as unpublished examples.

The Phillips Library Collection of the Peabody Essex Museum, Salem, Massachusetts, includes images of gravestones photographed in the early 20th century by Edwin Haviland Miller. Among the photos are several important Brookfield gravestones:

Lieut. Ephraim Walker	1777
Captain Thomas Gilbert	1793
Persis Hinckley	1793
Dorothy Walker	1804

The Winterthur Museum and Library in Winterthur, Delaware, is the repository for photographs by Dr. Allan Ludwig, author of Graven Images (550 prints, c. 1960) and Daniel Farber, one of the founders of the Association for Gravestone Studies (340 prints, c. 1954-1991). The Farber Collection is divided into two segments (manuscripts and decorative arts), but both contain Brookfield images:

United States Department of the Interior
National Park Service

National Register of Historic Places
Continuation Sheet

Brookfield Cemetery

Section number 7 Page 11 Brookfield, Worcester County, MA

Captain William Old	1749	
Robert Cutler	1761	by William Young of Tatnuck
Lieut. Ephraim Walker	1774	attrib. Sikes family of Connecticut
Job Hinckley	1783	
Mrs. Esperance Hastings	1789	
John Rice	1792	
Dorothy Walker	1804	attrib. Sikes family of Connecticut

The American Antiquarian Society in Worcester, Massachusetts, also holds a collection of gravestone photographs by Daniel and Jessie Lie Farber (available on CD-ROM). Many of the images were used by Chase and Gabel in Gravestone Chronicles I & II (1997).

The photograph collections are important because they show the gravestones in raking natural light that highlights the carving and inscriptions and because they provide a record of condition at that particular point in time.

Current Condition

The cemetery is maintained by the Town of Brookfield and by families who own particular plots. The condition of the cemetery is generally good with trees, shrubs, and lawn areas maintained with reasonable care. Most of the visible damage has resulted from environmental conditions and routine maintenance practices.

The stone markers and monuments exhibit normal weathering and decay. Many of the older slate tablet stones are tilted and delaminating. Many of the 19th century marble markers have been stained and eroded by acid rain. Many of the stones and markers are chipped and abraded at the height of the power mower. The family plots are still visible, but most of the iron chains and railings that formerly delineated the areas have been removed over time. The stone curbs and copings are remain, but many sections are skewed, fallen, partially buried, or removed.

The most obvious elements missing from the cemetery are the iron fences, rails, chains, and gates that demarcated many of the family plots and sections. Vestigial pins, eyes, and rust

**United States Department of the Interior
National Park Service**

**National Register of Historic Places
Continuation Sheet**

Section number 7 Page 12 Brookfield Cemetery
Brookfield, Worcester County, MA

stains indicate their former presence, although very few are now in evidence.

The normal effects of age and weathering contribute to the time-worn and historic sense of the cemetery. Some of the stones are now completely illegible, while many others can only be read for a brief period each day in the appropriate raking light. The slow and unstoppable deterioration of the grave markers is an apt analogy for the fading memory and mouldering remains sheltered in each grave. Time passes and all must come to dust. "As I am now, so you must be" and "Death is a debt to heaven due, which I have paid and so must you" are two of the more common verses encountered in the Brookfield Cemetery.

Restoration Plans

By nominating the Brookfield Cemetery to the National Register of Historic Places, the Town of Brookfield hopes to promote broader appreciation of the historic and artistic significance of this community resource. As the value and condition of the cemetery become more widely known, the Town intends to solicit public and private funds for restoration and maintenance.

(End of Section 7)

**United States Department of the Interior
National Park Service**

**National Register of Historic Places
Continuation Sheet**

Section number 8 Page 1 Brookfield Cemetery
Brookfield, Worcester County, MA

NARRATIVE STATEMENT OF SIGNIFICANCE

Brookfield Cemetery, West Main St., Brookfield, possesses integrity of location, design, setting, materials, workmanship, and association, and meets National Register criteria A and C on the local level. Brookfield Cemetery occupies a significant place in the history of the town as the town's only public cemetery from about 1714 to the present and thus qualifies under Criterion A. Because of town division, residents of at least six present towns are interred in Brookfield Cemetery. The cemetery contains the graves of early ministers, manufacturers, and other prominent citizens, including many whose homes lie within the Brookfield Common district. Family relationships and status differentials are evident, particularly in the 19th century sections. The cemetery represents a sustained civic commitment to provide proper burial. Particularly in the 19th century, it expresses increasing formality and elaborateness, culminating in the erection of a massive gate in 1873 and a Civil War monument in 1890. The presence of the Civil War monument adds importance to the cemetery and helps it remain a focus of community pride.

Under Criterion C, The Brookfield Cemetery is a significant historical and artistic resource that represents the distinctive characteristics of 18th, 19th, and early 20th century burial grounds and cemeteries in Massachusetts. The original 18th century burial ground features closely ranked burials without division. The grave markers are native sandstone, slate, granite, and quartzite carved with the exuberant and characteristic iconography of New England Puritan culture. Several of the grave markers are particularly significant because they represent the work of known 18th century stonecarvers. The persistent cultural imagery and the wide range of carving styles make 18th century New England gravestones a significant and distinguishable entity. The most important Brookfield examples have been published and described in major reference works.

Historical Background

**United States Department of the Interior
National Park Service**

**National Register of Historic Places
Continuation Sheet**

Brookfield Cemetery

Section number 8 Page 2 Brookfield, Worcester County, MA

The complex and rather unusual historical development of the present town of Brookfield has had a direct effect on the evolution of the cemetery. Early English travelers between Massachusetts Bay and the Connecticut River Valley noted the attractive agricultural lands of the Quaboag Valley. A group of colonists, predominantly from Ipswich, obtained a grant, known as Quaboag Plantation, in 1660 and began settling five years later. In 1673 the plantation, located more than 20 miles from the nearest European village, was incorporated as the town of Brookfield. The isolated settlement, centered on Foster's Hill, now West Brookfield, grew slowly until 1675, when it was attacked during King Philip's War and abandoned.

Brookfield still lay on an exposed frontier, and resettlement, though beginning in the 1680s, proceeded cautiously. In 1701 the town was expanded to an eight-mile square entity, and this grant was confirmed in 1719. Not until 1718 was Brookfield granted rights as a fully self-governing town. Three years earlier the inhabitants had begun erecting a church, situated on Foster's Hill, not far from the meetinghouse that had been burned in 1675.

A tendency toward fragmentation arose early in the sprawling, hilly town of Brookfield. In 1742 a chunk of territory in the southwest portion of town was set off as part of the new town of Western, now Warren. This left the meetinghouse near the western border and created additional discord within the remaining town. Inhabitants of the northern section formed a new (second) parish in 1750, but this only intensified disputes over the location of the meetinghouse in the remaining (south) parish.

Eventually the congregation split over this issue, and in the mid-1750s new churches were built on Banister's Hill (now Brookfield) and "the plain" (now West Brookfield). The boundaries of precincts (administrative units) coincided with the parishes, and for unknown reasons the General Court designated the precinct centered on Banister's Hill as the third. In time the terms precinct and parish became interchangeable and, although it may have had stronger continuity with the original

United States Department of the Interior
National Park Service

National Register of Historic Places
Continuation Sheet

Brookfield Cemetery

Section number 8 Page 3 Brookfield, Worcester County, MA

organization, the Banister's Hill congregation became known as the third parish.

In accord with common practice, organization of precincts was a preliminary stage toward the formation of separate towns. North Brookfield (former second precinct) was organized as a town in 1812, and in 1848 West Brookfield (former first precinct) was formed. Even then, the process of division was not complete, and East Brookfield became a separate town in 1920. The result of this confusing pattern of development, as summarized by Rev. Abijah P. Martin, author of the Brookfields section of Jewett's 1879 History of Worcester County, was that "the most ancient events in the town's history belong to the youngest of the three towns, as they now exist [prior to the separation of East Brookfield]; and that part which bears the name of the original town is the youngest of the three in order of settlement and parochial organization."

Early Burying Grounds

Burial practices at Quaboag Plantation and early Brookfield are not well documented. Four people are known to have died before the 1675 attack, and a modern historian, Louis E. Roy, affirms that they were laid to rest in "a small burying ground some distance behind the meeting house, along the road leading away from the town."¹ He also surmises that victims of the Indian attack were buried in the same location, for a total of 16 graves. Prior to around 1720, interments presumably continued to take place at this "old burying ground" on Foster's Hill.

Early Development of the Brookfield Cemetery: Town Burying Ground

In 1714, while still under the governance of a "prudential committee," the townspeople set aside a plot of land for use as a burying ground. This action was confirmed by town meeting in July

¹Quaboag Plantation alias Brookefield, 73.

**United States Department of the Interior
National Park Service**

**National Register of Historic Places
Continuation Sheet**

Brookfield Cemetery

Section number 8 Page 4 Brookfield, Worcester County, MA

1718, a few months before the town was granted full rights of self-government.² The land set aside at that time lies in the oldest (northwest) section of the present cemetery and has thus remained in use as a cemetery for nearly 300 years. Burials may have begun as early as 1720, although no surviving gravestones bear so early a date. Since the plot was dedicated for this use prior to the division of the town, it presumably contains burials from at least six present towns (four Brookfields, plus Warren and New Braintree).

When the town split into three parishes and precincts in the 1750s, it became necessary to divide the "ministerial lands," which had been reserved to provide additional income to the minister. The burying ground, located close to the boundary between the first and third precincts, lay within a tract of approximately 125 acres of ministerial land extending from the Quaboag River north to the road that generally preceded present Rt. 9.

Probably in anticipation of the division, the townspeople voted in October 1756 to stake out five acres within the ministerial lot for use as a burying place. Acting on the recommendation of a committee, the town accepted a division of the ministerial lands in 1758 under which the tract encompassing the burial ground was divided between the first and third precincts. The burial ground actually fell within, but was excluded from, the first precinct's portion. In the following year the three ministers surrendered any rights they had to the former ministerial lands, and in 1760 the town accepted the five-acre burial ground, as surveyed by James Whitcomb.

Most or all of the former ministerial lot around the burying ground apparently remained in public ownership. Town meeting minutes show that periodically efforts were made to lease this land, presumably for agricultural use. (The wetland portion of the tract could produce valuable fresh meadow hay.) The town meeting of May 14, 1787 chose a committee of three to lease the burying

²J.H. Temple, History of North Brookfield, 83.

United States Department of the Interior
National Park Service

National Register of Historic Places
Continuation Sheet

Section number 8 Page 5 Brookfield Cemetery
Brookfield, Worcester County, MA

ground for a three-year term at vendue (public auction).

In addition to providing a source of revenue, townspeople hoped that the lessee would fence the burying ground. Despite approval of building a permanent wall around the area, nothing was done, and the 1787 town meeting voted "to estimate the sum of money that Capt. Upham pay the Town instead of the wall he was to build for the Burying ground." At the close of the 18th century, the area remained without a permanent fence.

Through the close of the 18th century, Brookfield, situated on a main road from the coast to the Connecticut Valley, remained one of the wealthiest and most important towns in Worcester County and had been a leader in the struggle for independence. In 1791 it claimed a population of about 3100--1000 more than the shire town of Worcester. As far as is known, all Brookfield burials continued to take place in the third precinct burial ground.

Rev. Thomas Cheney, Brookfield's first settled minister, who died in 1747, is buried to the right of the early entrance to the cemetery. Four of his successors, Nathan Fiske, first ordained minister of the third parish; Thomas Snell; John Fiske; and Micah Stone are also interred there, as are wives and other family members. One grave that has become legendary is that of Joshua Spooner, a respected resident of the town. He was murdered March 1, 1778, by three unemployed soldiers, at the instigation of his much younger wife, Bathsheba, who was pregnant by one of them. All four were executed for the crime. Bathsheba Spooner, reputedly the last woman to be hanged in Massachusetts, was refused burial in consecrated ground and according to legend was secretly buried somewhere on her sister's land.

Expressing the increasing affluence and civic-mindedness of the 19th century, Brookfield inhabitants sought to improve and regularize management of their burying ground. A committee appointed by a town meeting in 1808 reported "that the Town should as soon as may be convenient compleat a good Wall adjoining the post Road and make a good and convenient gate for People to

United States Department of the Interior
National Park Service

National Register of Historic Places
Continuation Sheet

Brookfield Cemetery

Section number 8 Page 6 Brookfield, Worcester County, MA

pass and repass to said burial ground and also to rebuild so much of the Fence on the East side of said burial ground, as may be compleated with the Rents now due . . ." The meeting approved a motion to use these rents to build and repair the fence. This indicates that the practice of renting space in the burial ground was already established, and also that the area was partially fenced.

Another clause of the article proposed granting the burial ground to the inhabitants of the third parish. The committee recommended against this, for the reason that "there are many People in the other Parishes that have buried their Friends in said ground." However, in 1814, after North Brookfield had split off, a similar article was approved, with the provision "reserving the liberty for such Families as now have a right to bury in said ground." In addition, some of the previous opposition was probably diluted by the opening of a separate burying ground in West Brookfield, with the first interment there occurring in 1809.

When the south precinct was split by the separation of West Brookfield in 1848, the burying ground remained entirely within Brookfield. A parish committee had apparently been responsible for conducting burials and for routine upkeep, and on March 7, 1853, the parish voted to "relinquish its rights in the Burying Ground that is so far as the fencing, improving, ornamenting, care and superintendence is concerned, to the Town of Brookfield . . ."³ The tract of land seems to have remained largely intact in public ownership, except for a "small piece" set off to Seth Banister in 1787. Although the record is not clear, small purchases by the town in 1866 and 1921 may have been intended to recover this land and square off the boundaries of the cemetery tract.

Victorian Town Cemetery

With the burying ground now exclusively the concern of one town, and against a background

³History of the First Parish Church, Brookfield, Ma.

**United States Department of the Interior
National Park Service**

**National Register of Historic Places
Continuation Sheet**

Section number 8 Page 7 Brookfield Cemetery
Brookfield, Worcester County, MA

of elaborate Victorian funerary ritual, Brookfield soon took measures to improve management of the cemetery. Over the next several years, town meetings approved a series of measures to make administration of the site more efficient and to render its appearance more formal and dignified. As this process advanced, the character of the cemetery moved steadily away from its origins as a humble, utilitarian town burying ground in which the gravestones often expressed Puritan religious values.

In 1850 the town voted to procure a hearse and hearse house and in the following year paid \$112 for two hearse houses (plus \$6 for the foundations) and \$115 for the hearse. The location of the houses was not stated, but one was probably in East Brookfield. With the departure of West Brookfield, the remaining town contained two distinct villages, one on Banister's Hill and the other in East Brookfield. Generally the town attempted to equalize facilities between the two villages, although it rejected proposals to alternate town meetings.

A committee appointed in 1853 "to examine the burying grounds" recommended in the following year "that a good and permanent Stone Wall be made upon the south and east sides of said ground against land of Luther Stowell and David Perry." Its report found that "the north and west sides are now well fenced." In 1854 \$200 was spent for the walls, which at prevailing rates could have accomplished considerable work. By 1858 another \$408 had been spent to erect a "permanent fence" around the burial ground.

Another article on the April 1858 warrant proposed appointment of a committee "to arrange and stake off the Old burying ground, into proper sized lots and designate them by numbers, that the same may be properly assigned to individuals for the purpose of burial therein." The committee was formed and in 1860, acting on its report, the town appointed another committee to perform the survey. Completed by April 1861, the survey and division into family plots marked a significant step away from the communal aspirations of the early settlers and toward greater individualism.

The town meeting that took place on April 1, 1861--just days before the firing on Fort Sumter-

United States Department of the Interior
National Park Service

National Register of Historic Places
Continuation Sheet

Brookfield Cemetery

Section number 8 Page 8 Brookfield, Worcester County, MA

-made two further decisions that were critical in the transition to a more formal cemetery. First was the designation of a standing committee "to take charge of the burying ground." Previously, for more than a century, management of the burying ground had been conducted by temporary special committees, probably formed in response to observed problems. The standing committee evolved into the cemetery commission that has managed cemetery affairs ever since.

Another major and lasting improvement was the construction of a receiving tomb. The town appropriated a total of \$600 for two tombs, one in each village. They were built in 1861 under the supervision of Emmons Twichell, a member of the cemetery committee. There was clearly a faction in town that opposed building the tombs. In 1859, acting on the recommendation of a committee, the town had rejected a proposal to build a tomb. Instead, it voted to procure a bier and pall for each village, and this was presumably done. In June 1861, two months after approving the tomb, an article was introduced at a special town meeting to rescind the earlier vote, but it was not adopted. This may have represented a last stand by some who cherished the simplicity of the old burying ground. One who may have endorsed such sentiments was Rev. Lyman Whiting, a native of North Brookfield. Presenting an historical oration at the 200th anniversary observance of the founding of Brookfield in 1860, Dr. Whiting observed that in the old burying ground "In the true friendliness of fellow mortality, dust mingles with dust in common grave-yards, rather than in selfish, isolated little enclosures scattered over all the lands." Significantly, in 1867 town reports began referring to the site as a "cemetery," and the ancient term burying ground, now an unwelcome reminder of more straitened times, fell into disuse.

The committee formed to construct the tombs reported proudly in April 1863 that they "have been built in the most thorough and enduring manner." Furthermore, the committee, "after consulting with many of the largest taxpayers in the Town," erected granite gateposts with new gates at the cemeteries. All this work in the two villages was accomplished for a total expenditure of \$588.

The wave of industrialization that surged over Massachusetts in the early 19th century largely

**United States Department of the Interior
National Park Service**

**National Register of Historic Places
Continuation Sheet**

Brookfield Cemetery

Section number 8 Page 9 Brookfield, Worcester County, MA

bypassed Brookfield. Although the town lay along the Quaboag River, the absence of suitable waterpower sites deterred textile manufacturing. Leatherworking became important, with the first boot and shoe factory established in 1828. By the Early Industrial Period (1830-70) Brookfield had lost its former status as a local or regional core, despite its location on the Western Railroad, which arrived in 1839, and on a major highway. It remained, however, a prosperous agricultural community, with a population of 2660 and a valuation of \$1,244,769 in 1875. Ten years later the population rose above 3000.

Increasing wealth, the decline of Puritan restraint, the designation of separate family plots, the availability of professionally made and engraved monuments, joined with the massive social emphasis on proper memorialization, fostered a dramatic increase in ornate monumentation. This resulted in a distinctly visible contrast between the old burying ground and the sections of the cemetery developed in the mid- and late 19th century.

With the means and willingness to display their wealth, prominent citizens erected elaborate monuments, enclosures and gravestones. Many of these conspicuous memorials represent high artistic achievement. Shoe manufacturers and other residents of outstanding homes in the Brookfield Common historic district are buried in the cemetery. Charles Fales, owner of a boot factory, occupies a family plot. Emmons Twichell, a shoe manufacturer who supervised the transformation of the cemetery, lies within a distinctively walled family plot. Members of the Banister family, which owned the area that is now the town Common, occupy another family plot. Among the other locally prominent individuals buried in the Brookfield cemetery are Pliny Merrick, founder of the town library, and Oliver Crosby, a wealthy landowner who represented the town in the General Court and built perhaps the most impressive residence on the Common.

The movement to make the cemetery a dignified expression of civic pride and respectability culminated in the erection of the entrance gate in 1873. This substantial granite arch was the gift of

**United States Department of the Interior
National Park Service**

**National Register of Historic Places
Continuation Sheet**

Brookfield Cemetery

Section number 8 Page 10 Brookfield, Worcester County, MA

William A. Banister and Otis Hayden. Banister, a Brookfield native, made his fortune in the dry goods business in New York City and in his later years spent Summers in Brookfield. Hayden, though not a native, resided in Brookfield more than 50 years. He had died December 28, 1872. William Banister survived until 1890, and both men are buried in the same lot. In 1874 the town paid J.S. Sherman \$148.78 for work on the cemetery wall, probably in the area adjacent to the gate.

Undoubtedly influenced by famous cemeteries such as Mount Auburn, Brookfield residents apparently tried to a limited degree to emulate their tasteful, parklike atmosphere of repose. While they did not hire a landscape architect or follow a formal plan, they introduced plants and maintained natural contours. Family plots often displayed decorative features that enhanced the picturesque effect. The town may have contributed to this beautification effort. In 1856 voters approved spending town funds to plant willows along the "Causeway" over the Quaboag River. Perhaps cognizant of the tree's symbolism in representing mourning, the town may have later been responsible for planting the willows along the crossing of Willow Brook, just beyond the northwest corner of the cemetery.

The most memorable day in the history of the Brookfield cemetery was July 4, 1890, when the Civil War monument was dedicated. A large crowd followed 160 veterans to the site of the Grand Army lot, located in what was then the northeast corner of the cemetery. After the formal dedication, the procession marched to the Town Hall for further exercises, culminating in the singing of "America" by the assembly. Veterans of all America's wars are buried in the cemetery, and the graves are marked where possible. At least 33 veterans of the Civil War are known to be interred, the last, who died at the age of 87, joining his comrades in 1933. Placing the monument within the cemetery brings Memorial Day observances there and probably makes townspeople more aware of the cemetery than is true of towns that chose the more frequent location on the common or near the town hall.

United States Department of the Interior
National Park Service

National Register of Historic Places
Continuation Sheet

Brookfield Cemetery

Section number 8 Page 11 Brookfield, Worcester County, MA

Modern Cemetery

In the 20th century the predominant trend at the cemetery was the gradual opening up of new sections to the east and south. Meanwhile, in keeping with changing tastes, gravestones became more standardized and less ornate, so that the newer sections appear plainer and have less vertical relief.

After the leather processing industry declined in the 1880s, three woolen mills flourished in Brookfield. However, the town remained largely agricultural through the first half of the century, with dairying the dominant activity. As Worcester County became more industrial, Brookfield's relative importance within the county steadily shrank. In 1920, after the separation of East Brookfield, the remaining town showed a population of only 2216, in a county that had over 455,000 inhabitants. With little industry, Brookfield did not attract a large immigrant population. In 1915 the foreign-born population was less than 20%. This is evident in the cemetery, where the family names remained predominantly old-stock Yankee well into the 20th century. Only in the latter decades of the century, as Brookfield became more residential in character, did members of ethnic groups whose families had earlier come into the region as factory and agricultural workers, become a substantial part of Brookfield's population.

Major expansions of the cemetery took place in the 1920s and the 1940s. By the mid-1930s there were 1006 burial lots, containing over 2250 monuments, headstones and markers. One family plot contains reinterments and monuments transferred in 1934 from North Dana, in one of the towns taken for the construction of Quabbin Reservoir. In 1941-42, 61 additional plots were laid out in the new easterly section and 40 more in the "open field westerly of the tool house," according to town annual reports. In 1952, 66 truckloads of fill created more new plots in the eastern section. With ease of maintenance undoubtedly a consideration, roadways laid out in the new areas were straight and parallel.

Under the management of the cemetery commission, characterized by long tenures, town funds

**United States Department of the Interior
National Park Service**

**National Register of Historic Places
Continuation Sheet**

Brookfield Cemetery

Section number 8 Page 12 Brookfield, Worcester County, MA

were regularly appropriated for cemetery maintenance and improvement. In 1937 as a representative year, cemetery workers filled in and leveled 102 sunken graves, turfed around four monuments, trued 16 monuments to an upright position, cemented 12 headstones to base, cleaned 464 monuments and markers, excavated for ten cement foundations for monuments, removed from the ground 135 stone posts four to five feet in length to which iron fences had once been attached, raised and moved three deep markers, and white-lined 1232 letters and numerals.

Except for grass, plantings seem to have been allowed to fare for themselves during the early part of the 20th century, but in the 1930s more attention began to be devoted to this topic. One stimulus for this shift in emphasis was the severe cutting of vegetation by the State Highway Department. In the Winter of 1929-30 the Department asked permission to trim the trees along the wall at "Cemetery Curve" to allow the sun to shine through and free the curve of ice. To the dismay of the cemetery commission, highway crews proceeded to cut back a distance of 200 feet and trimmed some trees up to a height of 30 feet. After receiving protests from the town, the district engineer made restitution by planting numerous replacement trees and shrubs. Some of these plantings probably still survive.

The 1938 hurricane caused considerable devastation, bringing down or breaking off some 45 trees. Most of these were old trees, so that the new plantings of 1930 proved fortuitous. In 1939 a New Deal agency, the Civilian Conservation Corps, helped repair the hurricane damage and dynamite stumps. Removing massive trees and their root systems probably had the unanticipated benefit of creating more burial plots and stabilizing existing graves and monuments.

Encouraging grass and the resultant mowing became and has remained a major concern of the cemetery work force. Annual reports indicate that a water system was being installed in the early 1920s, but it is not clear whether this was an entirely new system or an addition. The commission purchased its first power mower in 1928 and in 1930 reported that it had been able for the first time to

United States Department of the Interior
National Park Service

National Register of Historic Places
Continuation Sheet

Section number 8 Page 13 Brookfield Cemetery
Brookfield, Worcester County, MA

mow the entire cemetery and outside the wall, "except for two swamp sections." In a reversion to 18th century practice, the commission earned some income in 1932 by renting what was called "the pasture"--presumably the lower section toward the river.

Cemetery commissioners undertook regular improvements to roads and other facilities. Roads were added as new sections were opened, and the commission pursued a long-term effort to provide a hard surface for these roadways. In 1937 the middle avenue in the new eastern part was extended about 80 feet, and a crossover was built to the western avenue. More new avenues were laid out in 1942-44. As recently as 1996, a new road, Number 5, was constructed with grindings from a Rt. 9 reconstruction.

Cemetery workers also devoted considerable effort over the years to maintaining walls, gates and other features. In 1937 a motorist crashed into the cast iron gates at the main entrance, "tearing off two of them and breaking them up badly." Whether or not related to this incident, the annual report for 1940 shows that a new foundation was built for the easterly arch at the granite gate. A 30-foot steel flagpole was set in concrete at the soldiers' monument in 1933, and this pole was replaced in 2000. A new sidewalk along the frontage was constructed in 1965. Increasing amounts of equipment led to the building of a new toolshed, probably the one now present, in 1975.

Draining and filling wetlands has provided a persistent challenge to cemetery managers. Although a finger of wetland has been retained to provide a picturesque feature in the western part of the cemetery, historical records indicate that other wet areas have been eliminated. Annual reports from the early 1930s show that over 1000 feet of trenches was dug in the area south of the receiving vault. More than 200 feet of trench was tiled and buried, while the remainder was left open. The result, as stated in the 1933 report was to make "the unsightly meadow and bog-hole an open plat of lawn nicely grassed over." The various cemetery expansions, particularly in the early 1950s, required large amounts of fill to create usable sites. Furthermore, it was reported in 1962 that "A large area of swamp land was

**United States Department of the Interior
National Park Service**

**National Register of Historic Places
Continuation Sheet**

Brookfield Cemetery

Section number 8 Page 14 Brookfield, Worcester County, MA

filled by the Highway Dept. to make a parking area at the lower part of the cemetery."

The presence of wetland has a direct bearing on the cemetery's future prospects. Although the area actually used for cemetery purposes is only approximately one-third of the municipally owned tract, the apparent abundance of land may be deceptive. Much of the remainder is wet or, as the 2000 annual report pointed out, characterized by exposed bedrock. While, at the present rate of interments, there is ample space for some time to come, the cemetery may eventually encounter space problems. The 2000 report advised that there may be a need to designate the area containing surface rock "strictly for cremations."

Historical Cemetery Styles

The Brookfield Cemetery is a significant historical and artistic resource that represents the distinctive characteristics of 18th, 19th, and early 20th century burial grounds and cemeteries in Massachusetts. The original 18th century burial ground (northwest portion of the current cemetery) features closely ranked burials without division. The grave markers are native sandstone, slate, granite, and quartzite carved with the exuberant and characteristic iconography of New England Puritan culture. The stones also represent the work of several known stonecarvers of the 18th century.

The middle section of the cemetery represents the aesthetic of the Victorian garden cemetery exemplified by Mount Auburn Cemetery (Cambridge, Mass., 1831), Greenwood Cemetery (Brooklyn, NY, 1838), and Greenwood Cemetery (Philadelphia, Penn., 1838). The more extensive layout and more careful landscaping reflected in the expansion of the Brookfield Cemetery allowed sculptural monuments to be used to greater effect. Family plots (some outlined and some not) are arrayed throughout the 19th century section, often with a large family monument surrounded by smaller stones and enclosed by curbing. Neoclassical mourning motifs

United States Department of the Interior
National Park Service

National Register of Historic Places
Continuation Sheet

Section number 8 Page 15 Brookfield Cemetery
Brookfield, Worcester County, MA

are evident in the widespread use of white marble and in the large number of carved pedestals, shafts, columns, obelisks and urns. Many of the simpler tablet stones are carved with standards neoclassical motifs of mourning figures (male and female), weeping willows, and urns.

The eastern section of the Brookfield Cemetery represents the aesthetic of the Modern Cemetery movement after 1900. To facilitate maintenance and management, the arrangement of burial plots is more regular. Family groupings are evident, but they are not set off by curbing or fences. Large sculptural monuments are rare with most burials marked by standard rough or polished granite headstones. The newer section also features many stones set flush with the ground in order to facilitate mowing and discourage vandalism.

Stonecarvers and Known Makers

Several of the grave markers in the Brookfield Cemetery are particularly significant because they represent the work of known 18th century stonecarvers. The persistent cultural imagery and the wide of carving styles make 18th century New England gravestones a significant and distinguishable entity. The most important Brookfield examples have been published and described in some of the major reference works (cf. Bibliography).

Known Carvers of Brookfield Gravestones (published references)

William Young (1711-1795), "the thistle-carver of Tatnuck [Worcester]" (Gillon, Early New England Gravestone Rubbings, Plates 50, 57, 58, 62, 169; and Ludwig, Graven Images, Plates 48A, 88 A&B, 89, 118B)

Beza Soule (1750-1835) of Brookfield, and related family of stonecutters (Gillon Early New England Gravestone Rubbings, Plate 115; and Ludwig, Graven Images, p. 355)

Ebenezer Howard (1734-1777+) of Newton (Chase & Gabel, Gravestone Chronicles)

United States Department of the Interior
National Park Service

National Register of Historic Places
Continuation Sheet

Brookfield Cemetery

Section number 8 Page 16 Brookfield, Worcester County, MA

Jonathan Worster (1707-1754) and his son Moses Worster (1739-1772+), both of Harvard, Mass. (Ludwig, Graven Images, p. 371)

Sikes family of Connecticut (Ludwig, Graven Images, p. 412-416)

Known Carvers of Brookfield Gravestones (unpublished notes of Peter Terry)

Amy Carey, Boston, Mass.
Collins family, Columbia, Conn.
B.H. Kinney, Worcester, Mass.
C.P. Risling (location unknown)
C. Sanford, Ware, Mass.
S. Soule, North Brookfield, Mass.
Tateum, Milford, Massachusetts
William Young, Worcester, Mass.

Most of the 18th century gravestones are upright slabs of native slate, sandstone, granite, or quartzite with an arched or shaped top. The carved face of the stone typically features side borders of vines, thistles, flowers, fruit, or geometric motifs. The arched top section may include a number of carved motifs such as memento mori (skulls, death's heads, hourglasses), stylized faces known as soul effigies (sometimes depicted with wings or crowns), salvation motifs (birds, trees), and geometric elements (pinwheels, scrolls, cross hatching). The center panel of the stone is reserved for the name, dates, and earthly station of the deceased. The lower section often includes a memorial tribute or a brief verse.

There is no scholarly consensus on whether the symbols and iconography of the 18th century carved stones have a direct religious significance, a broader secular connotation, or are simply intended to add beauty and interest to the stone. It is also important to note that many of the stones (including some 18th century examples and most of the 19th & 20th century examples) may have been partially pre-carved prior to their selection for a particular burial. Meandering

**United States Department of the Interior
National Park Service**

**National Register of Historic Places
Continuation Sheet**

Brookfield Cemetery

Section number 8 **Page** 17 Brookfield, Worcester County, MA

vines, soul effigies, and even some standard verses may not have been specific to the deceased. In addition, the practice of back-dating stones and replacing deteriorated stones has been well documented in standard gravestone studies. Therefore, the date of burial does not always represent the date of the gravestone or marker.

(End of Section 8)

United States Department of the Interior
National Park Service

National Register of Historic Places
Continuation Sheet

Section number 9 Page 1 Brookfield Cemetery
Brookfield, Worcester County, MA

MAJOR BIBLIOGRAPHICAL REFERENCES

Brookfield History

Annual Reports of the Town of Brookfield.

Crane, E.B. History of Worcester County, Massachusetts. (New York: 1924).

Eddy, Charles W. Brookfield Illustrated with Pen and Camera. (Ware, MA: 1886).

Hurd, D. Hamilton. History of Worcester County, Massachusetts. (Philadelphia: 1889).

Jewett, C.F. History of Worcester County, Massachusetts. (Boston: 1879).

Kingsley, E. & F. Knab. Picturesque Worcester. (Springfield, MA: 1895).

Nelson, John. Worcester County: A Narrative History. (New York: 1934).

Roy, Louis E. Quaboag Plantation alias Brookfield. (1965).

Systematic History Fund. Vital Records of Brookfield, Massachusetts to the end of the year 1849. (Worcester: Franklin P. Rice; 1909).

Maps & Plans

1830 Stebbins, *Map of Brookfield, Massachusetts* (corporate boundaries and major roads)

1855 Fagan, *Map of Brookfield, West Brookfield and North Brookfield*

1870 Beers, *Atlas of Worcester County, Massachusetts*

1885 Walker, *Atlas of Brookfield, West Brookfield, and North Brookfield, Massachusetts*

1898 Richards, *Atlas of Worcester County, Massachusetts*

United States Department of the Interior
National Park Service

National Register of Historic Places
Continuation Sheet

Brookfield Cemetery

Section number 9 Page 2 Brookfield, Worcester County, MA

1904 Walker, *Atlas of Massachusetts*

1909 Walker, *Atlas of Massachusetts*

1922 Walker, *Atlas of Massachusetts*

n.d. Plan of lots, Brookfield Cemetery (central section only, probably c. 1930)

Cemeteries & Gravestone Art

(N.B.: Asterisks denote sources particularly relevant to the Brookfield Cemetery)

Benes, Peter. The Masks of Orthodoxy: Folk Gravestone Carving in Plymouth County, Massachusetts, 1689-1805. 1977.

*Benes (ed.), Peter. Puritan Gravestone Art I: The Dublin Seminar for New England Folklife, Annual Proceedings 1978. Boston: Boston University; 1976.

*Benes (ed.), Peter. Puritan Gravestone Art II: The Dublin Seminar for New England Folklife, Annual Proceedings 1978. Boston: Boston University; 1978.

*The Boston Experience: A Manual for Historic Burying Grounds Preservation. Boston Parks & Recreation Department, 1989.

*Chase, Theodore and Laurel K. Gabel. Gravestone Chronicles I & II: Some Eighteenth Century Gravestone Carvers and Their Work. Boston: New England Historic Genealogical Society; 1997.

Coffin Margaret M. Death in Early America: The History and Folklore of Customs and Superstitions of Early Medicine, Funerals, Burials, and Mourning. 1976.

Colvin, Howard. Architecture and the After-life. 1991.

*Curl, James Stevens. A Celebration of Death. New York: Charles Scribners Sons; 1980.

Deetz, J.F. & E.S. Dethelsen. *Death's Head, Cherub, Urn, and Willow* in Natural History, no. 76, pp. 29-37. 1967.

United States Department of the Interior
National Park Service

National Register of Historic Places
Continuation Sheet

Brookfield Cemetery

Section number 9 Page 3 Brookfield, Worcester County, MA

*Duval, Francis Y. and Ivan B. Rigby. Early American Gravestone Art in Photographs: 200 Outstanding Examples. New York: Dover Publications, Inc.; 1978.

Folklore Forum: The Folklore of Death and Burial. Folklore Forum, 1998.

*Forbes, Harriette Merrifield. Gravestones of Early New England the Men Who Made Them, 1653-1800. Boston: Riverside Press of Houghton Mifflin; 1927 (reprint 1955).

French, Stanley. *The Cemetery as Cultural Institution: The Establishment of Mount Auburn and the Rural Cemetery Movement in American Quarterly*, no. 26, pp. 37-59. 1974.

*Gillon, Edmund Vincent Jr. Early New England Gravestone Rubbings. New York: Dover Publications, Inc.; 1966.

*Gillon, Edmund Vincent Jr. Victorian Cemetery Art. New York: Dover Publications, Inc.; 1972.

Grimmer, Anne E. A Glossary of Historic Masonry Deterioration Problems and Treatments. U.S. Dept. of the Interior / National Park Service, 1984.

Halporn, Roberta. Lessons From the Dead: The Graveyard as a Classroom for the Study of the Life Cycle. 1979.

Jackson, Kenneth T. and Camilo Jose Vergara. Silent Cities: The Evolution of the American Cemetery. 1989.

*Jacobs, G. Walker. Stranger Stop and Cast an Eye: A Guide to Gravestones and Gravestone Rubbing. Brattleboro, VT: The Stephen Greene Press; 1973.

Keister, Douglas. Going Out in Style: The Architecture of Eternity. 1997.

Linden-Ward, Blanche. Silent City on a Hill: Landscapes of Memory and Boston's Mount Auburn Cemetery. 1989.

*Ludwig, Allan. Graven Images: New England Stonecarving and Its Symbols, 1650-1815. Hanover, NH: University Press of New England; 1966 (Third edition by Wesleyan

United States Department of the Interior
National Park Service

National Register of Historic Places
Continuation Sheet

Section number 9 Page 4 Brookfield Cemetery
Brookfield, Worcester County, MA

University Press, 1999).

Meyer, Richard E. (ed.). Cemeteries and Gravemarkers: Voices of American Culture. 1989.

Mitford, Jessica. The American Way of Death. 1963.

*Olde-Time New England: Special Issue on Gravestone Carving, Vol. LXIV, No. 2 (October-December 1973). Boston: Society for the Preservation of New England Antiquities; 1973.

Sellars, Richard West. *Vigil of Silence: The Civil War Memorials in History News*, vol. 41, pp. 19-23. 1986.

*Slater, James A. "The Colonial Burying Grounds of Eastern Connecticut and the Men Who Made Them", in Memoirs of the Connecticut Academy of Arts and Sciences, Vol. XXI (July 1987). Hamden, CT: Archon Books; 1987.

Sloane, Charles. The Last Great Necessity: Cemeteries in American History. 1995.

*Stannard, David E. The Puritan Way of Death: A Study in Religion, Culture and Social Change. 1977.

Strangstad, Lynette. A Graveyard Preservation Primer. AASLH/AGS, 1988.

Tashjian, Dickran and Ann. Memorials for Children of Change: The Art of Early New England Stonecarving. 1974.

*Terry, Peter (Brookfield Historical Commission). "Brookfield Cemetery" Massachusetts Historical Commission inventory form (Form E); December 1986.

Wallis, Charles L. American Epitaphs: Grave and Humorous. 1973.

*Watters, David H. "With Bodilie Eyes": Eschatological Themes in Puritan Literature and Gravestone Art. Ann Arbor, MI: UMI Research Press; 1981.

*Watters, David H. (ed.) Markers III: The Journal of the Association for Gravestone Studies. [Includes: *Where the Bay Meets the River: Gravestones and Stonecutters in the River*

United States Department of the Interior
National Park Service

**National Register of Historic Places
Continuation Sheet**

Section number 9 Page 5 Brookfield Cemetery
Brookfield, Worcester County, MA

Towns of Western Massachusetts, as well as Speaking Stones: New England Grave Carving and the Emblematic Tradition, and also "And the Men Who Made Them": The Signed Gravestones of New England.] 1985.

Wells, Charles Chauncey. Boston's Copp's Hill Burying Ground Guide. 1998.

Wilson, Susan. Garden of Memories: A Guide to Historic Forest Hills [Boston]. 1998.

Zielinski, A. K. Conservation of Cemeteries: The Treatment, Repair and Maintenance of Cemetery Objects and Their Environment. 1988.

(End of Section 9)

**United States Department of the Interior
National Park Service**

**National Register of Historic Places
Continuation Sheet**

Section number 10 Page 1 Brookfield Cemetery
Brookfield, Worcester County, MA

VERBAL BOUNDARY DESCRIPTION:

The boundaries of the nominated district are shown as a penciled line on the accompanying Assessors Maps of the Town of Brookfield, Map 6B, Parcel 10 (continued on Map 7B). Starting at the northwest corner of the cemetery and the main road (Route 9), the cemetery boundary runs southeast along the highway boundary a distance of approximately 1,000 feet, then continues south for a distance of approximately 1,800 feet to the railroad right-of-way, then runs northwest along the railroad corridor a distance of approximately 1,000 feet, then returns north and north-northeast a distance of approximately 2,000 feet to the point of beginning.

BOUNDARY JUSTIFICATION:

The boundaries of the National Register nomination delineate the developed and undeveloped areas of the Brookfield Cemetery as it has been used from the mid-18th century to the present, a total of 43 acres.

The northern boundary follows the stone wall and frontage along Route 9 (approx. 1000 ft.). The eastern boundary follows the eastern edge of the parcel (including the 1942 expansion) to the railroad right-of-way along the Quaboag River. The southern boundary parallels the northern along the railroad corridor. The western boundary is defined by a stone wall and hedgerow along the western edge of the parcel.

The parcels that border the cemetery on the west, north, and east are privately owned and represent a range of commercial, residential, and agricultural uses. The cemetery parcel is bounded on the south by the Conrail railroad tracks adjacent to the Quaboag River.

(End of Section 10)

**United States Department of the Interior
National Park Service**

**National Register of Historic Places
Continuation Sheet**

Property Owners **Page** 1 Brookfield Cemetery
Brookfield, Worcester County, MA

Owners, Brookfield Cemetery NRHP district

Map 6B-Parcel 10 and Map 7B

Town of Brookfield
Town Hall
Brookfield, MA 01506

Tel. 508-867-8004

(End of Property Owners list)

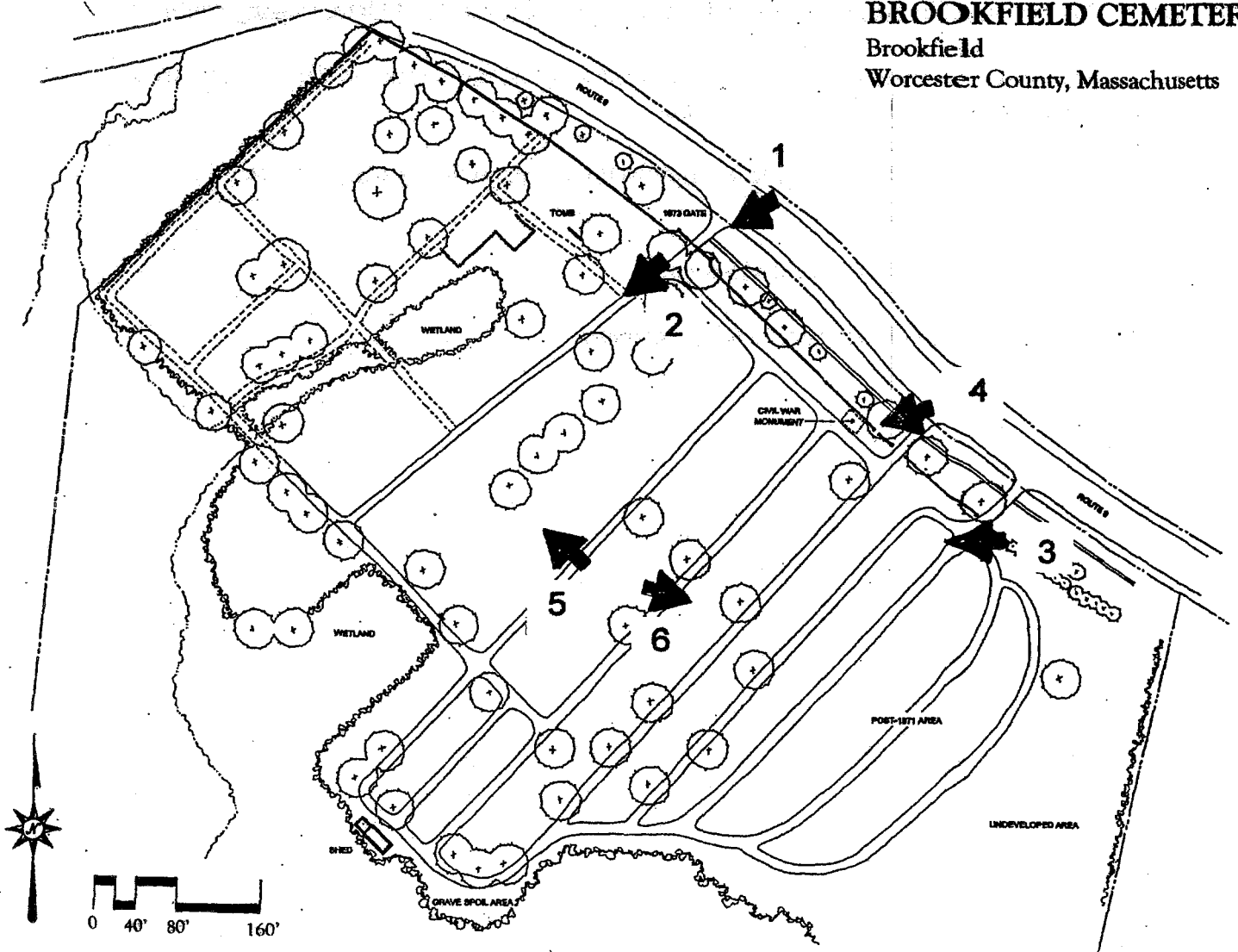
United States Department of the Interior
National Park Service

National Register of Historic Places
Continuation Sheet

Brookfield Cemetery
Brookfield, Worcester County, MA
Photographs Page 2

PHOTOGRAPH LOCATIONS

BROOKFIELD CEMETERY
Brookfield
Worcester County, Massachusetts



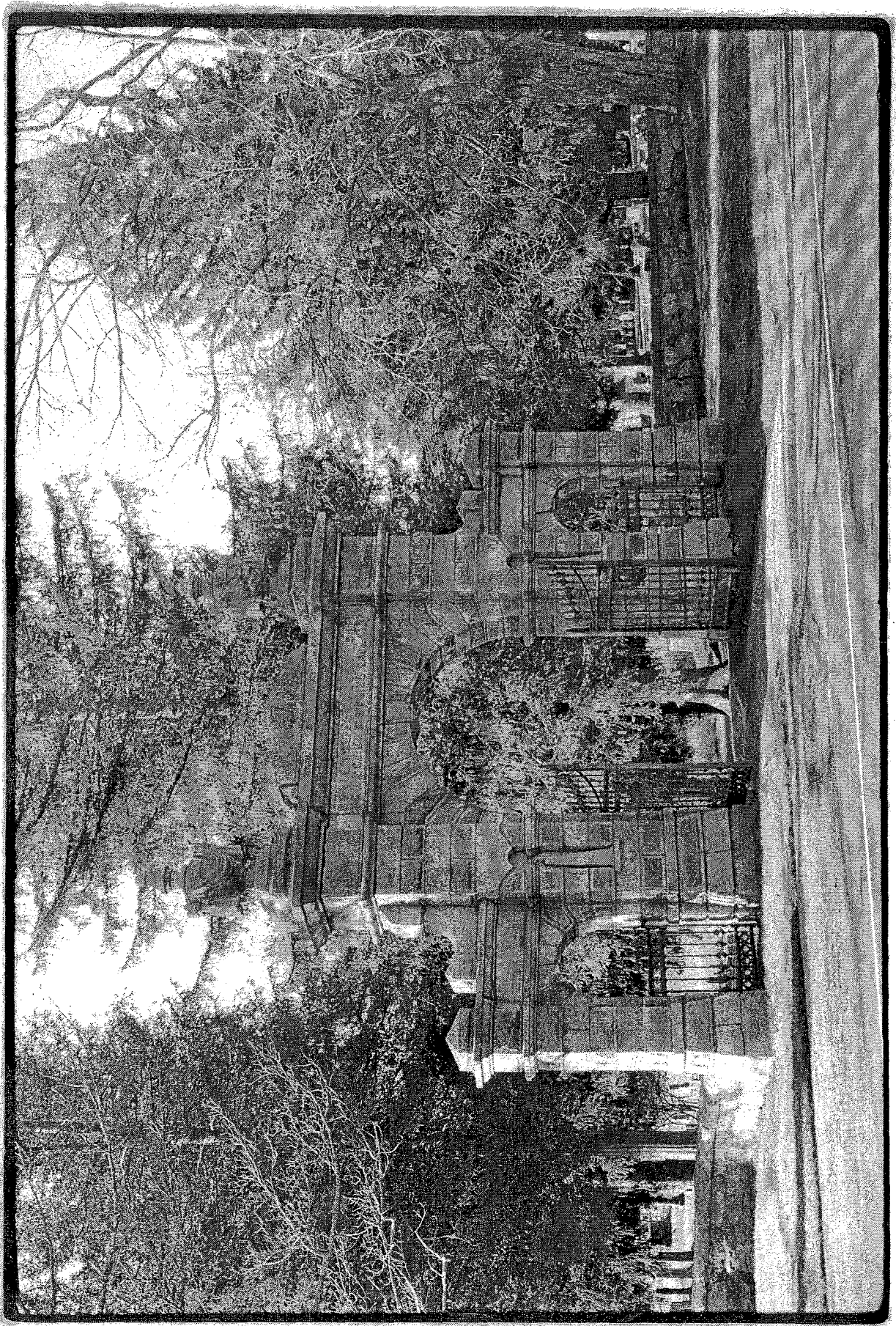
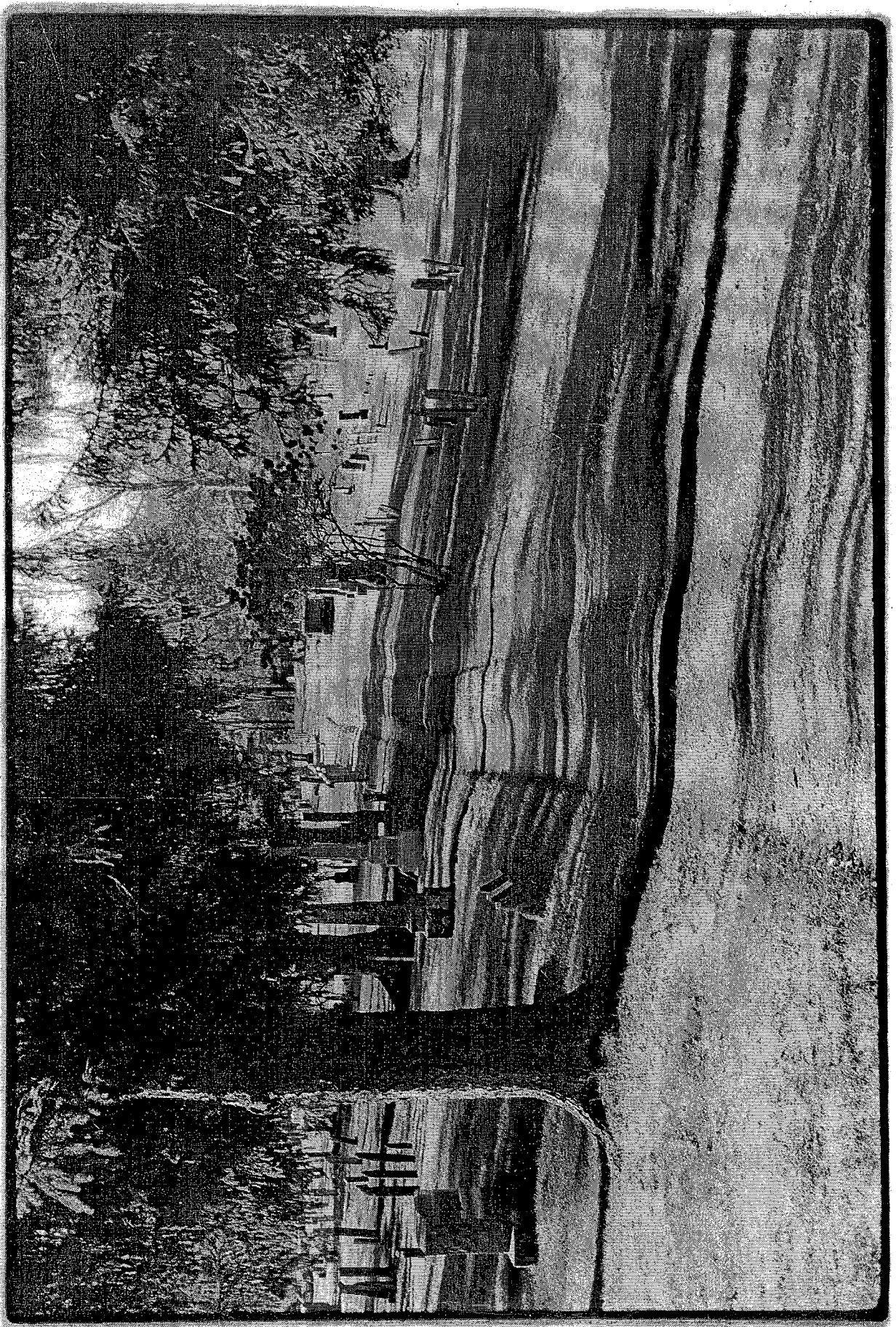


PHOTO #1

SPROCKFIELD CEMETERY
SPROCKFIELD, WORCESTER COUNTY, MASSACHUSETTS
PHOTOGRAPHER: VARENY JONENSTAL - DECEMBER 2001

THE 1873 GATE TAKEN FROM THE NORTH EDGE OF ROUTE 9,
WORKING SOUTH.



Copyrighted material

PHOTO #2

BROOKFIELD CEMETERY

BROOKFIELD, WORCESTER COUNTY, MASSACHUSETTS

PHOTOGRAPHER: LARRY LOWENTHAL - DECEMBER 2001

THE TURF AND PIRT CEMETERIAL GOLF PATH TAKEN FROM
INSIDE THE 1890S GOLF COURSE, WORKING SOUTH

PHOTO #3

SPRINGFIELD CEMETERY

SPRINGFIELD, NORFOLK COUNTY, MASSACHUSETTS

PHOTOGRAPHER: LARRY LONENFAL - DECEMBER 2001

THE CEMETERY LANDSCAPE TAKEN FROM THE NORTH
EDGE OF THE MIDDLE SECTION, LOOKING WEST ACROSS
THE 18TH AND 19TH CENTURY SECTIONS.

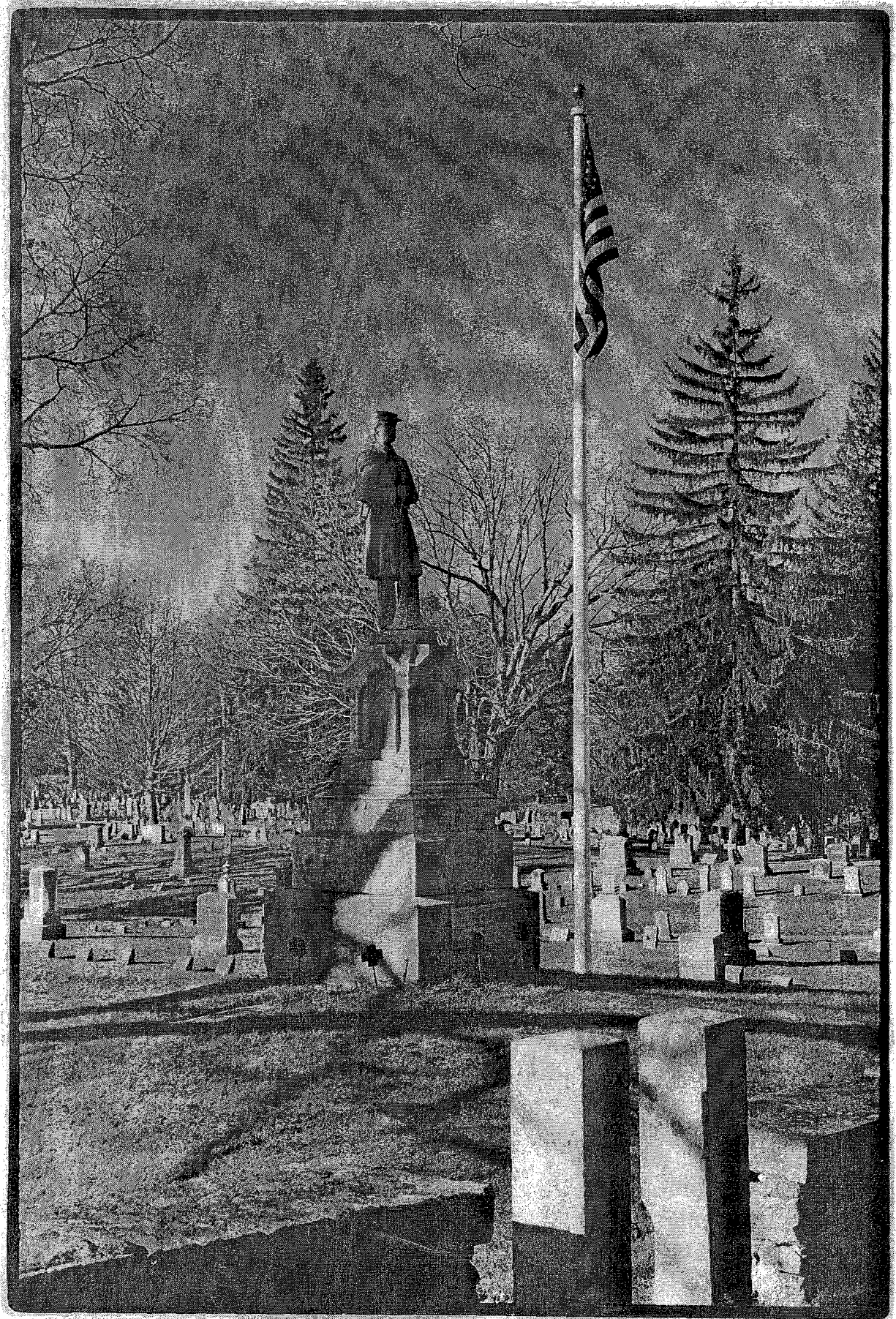


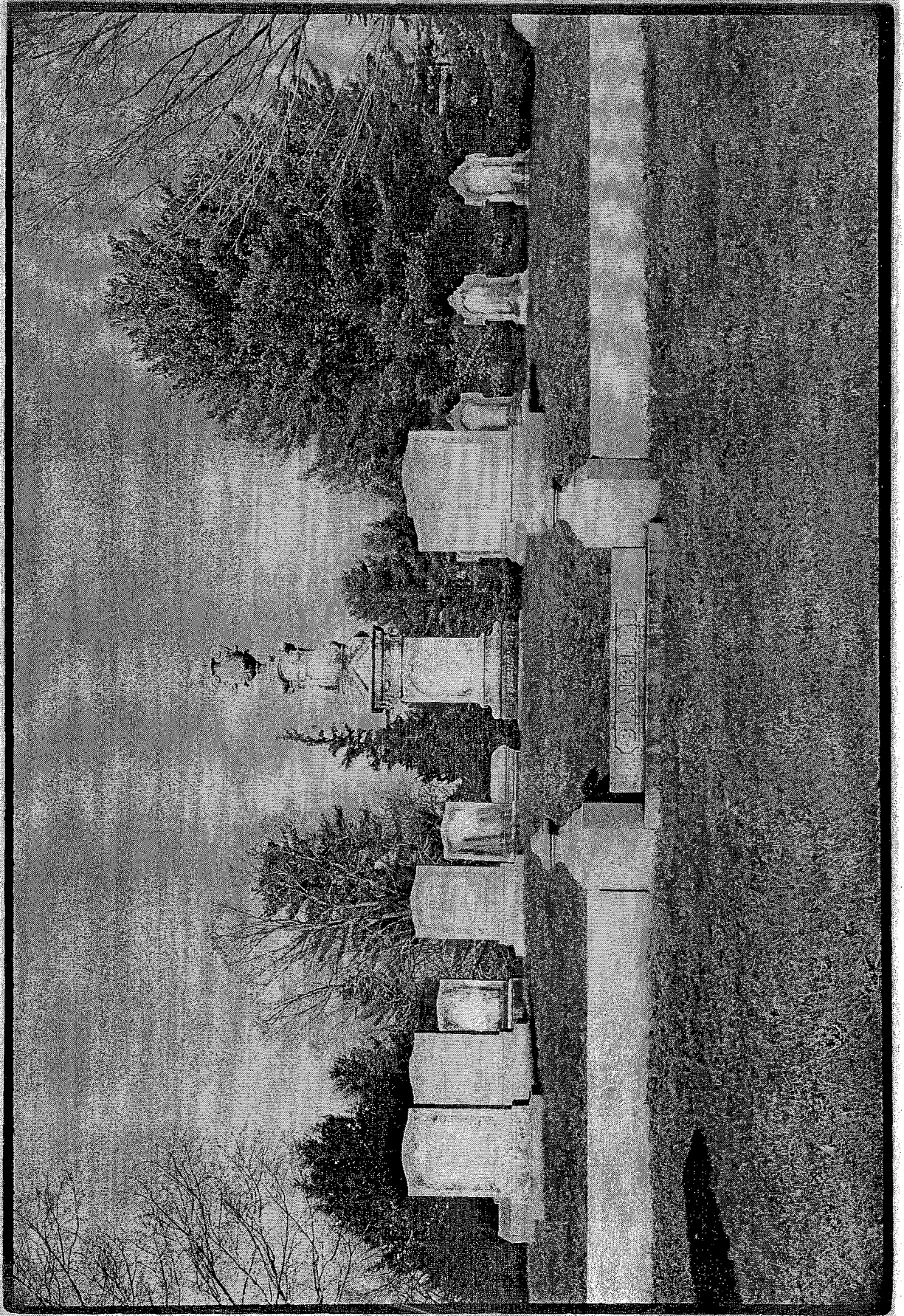
PHOTO # 4

BROOKFIELD CEMETERY

BROOKFIELD, WORCESTER COUNTY, MASSACHUSETTS

PHOTOGRAPHER: LARRY LOWENTHAL, DECEMBER 2001

THE 1891 CIVIL WAR MONUMENT TAKEN FROM THE CENTER
CEMETERY ENTRANCE, LOOKING SOUTHWEST.



PLM #5

BROOKFIELD CENTER
BROOKFIELD, WILMINGTON, MASSACHUSETTS
PHOTOGRAPHER: VAREY IDENTICAL - FEBRUARY 2001

THE BLANCHARD FAMILY PLOT, WORKING WEST

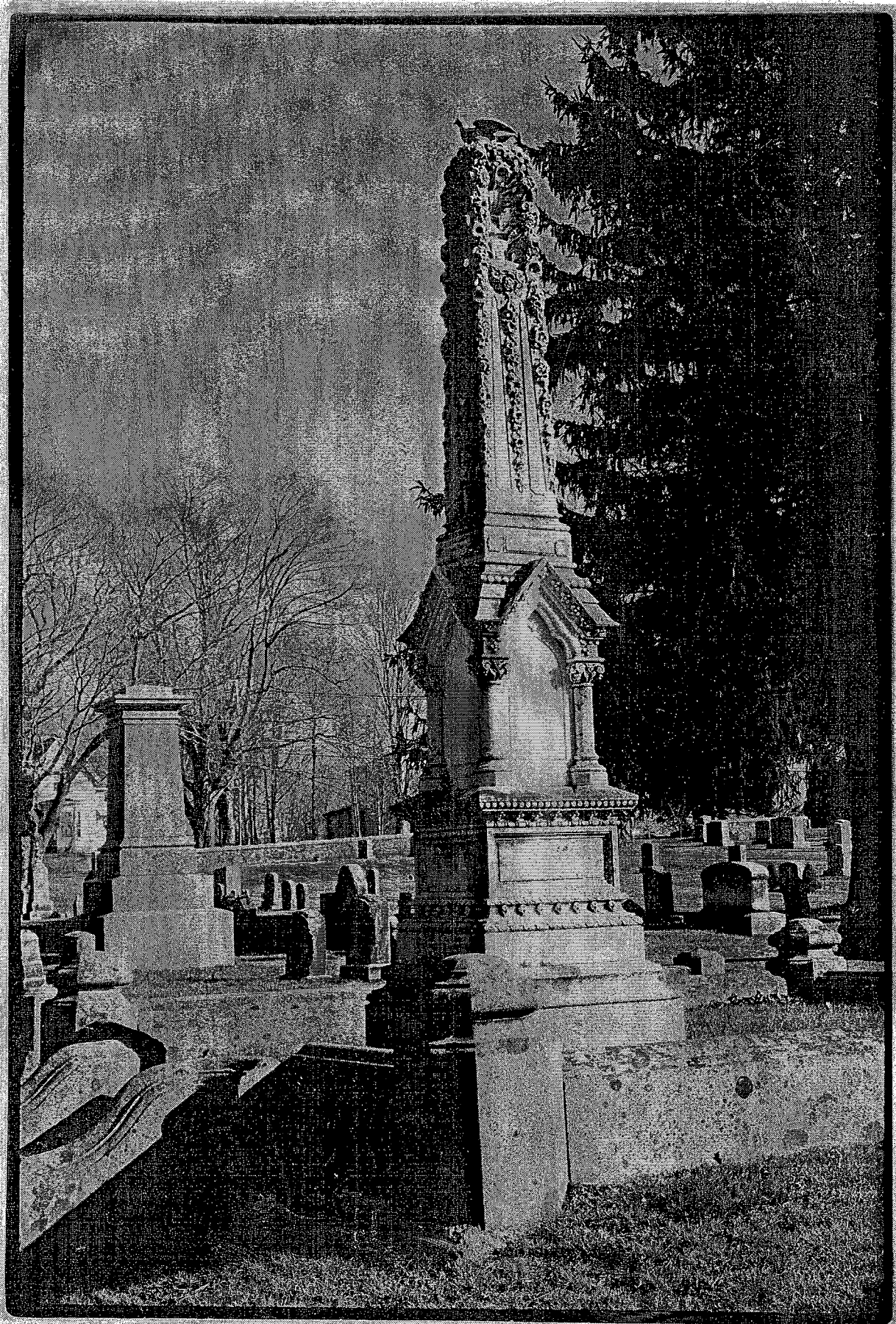


PHOTO #6

BROOKFIELD CEMETERY

BROOKFIELD, WORCESTER COUNTY, MASSACHUSETTS

PHOTOGRAPHER: LARRY LOWENTHAL - DECEMBER 2001

THE EDWIN RICE FAMILY PLOT, LOOKING NORTHEAST.

**United States Department of the Interior
National Park Service**

**National Register of Historic Places
Continuation Sheet**

Slides

Page 1

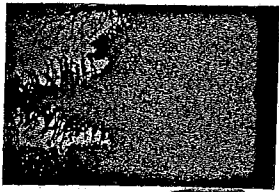
Brookfield Cemetery
Brookfield, Worcester County, MA

LIST OF SLIDES

- #1: The 1873 granite arch entryway taken from the south side of Route 9 looking southwest.
- #2: The Civil War monument, dedicated in 1890, taken from the northern cemetery edge looking southwest.
- #3: The 1861 Town Tomb, taken from the cemetery interior, looking northward.
- #4: The plot of the Kimball family and adjacent wetland, taken from the cemetery interior, looking eastward.
- #5: The brownstone marker of Comfort Barns (d. 1748), taken from the cemetery interior looking eastward.

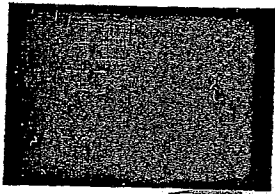
(End of Slides)

BROOKFIELD CEMETERY
BROOKFIELD, MA



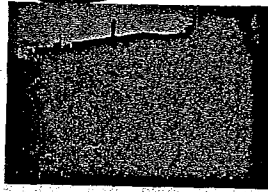
Kodak Picture
PROCESSING

#2 BROOKFIELD CEMETERY
BROOKFIELD, MA



Kodak Picture
PROCESSING

Kodak Picture



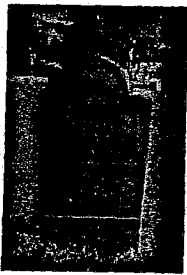
#3 BROOKFIELD CEMETERY
BROOKFIELD, MA

Kodak Picture



#4 BROOKFIELD CEMETERY
BROOKFIELD, MA

C. Barnes 1748



#5 BROOKFIELD CEMETERY
BROOKFIELD, MA

BROOKFIELD CEMETERY
 Brookfield
 Worcester County, Massachusetts

DATA SHEET

Note: All resources contained in the data sheet can be found on Town of Brookfield Assessors' Map #7B-10.

SECTION	RESOURCE	YEAR	MAKER	MATERIAL / FORM	NOTES	TYPE STATUS
	BROOKFIELD (MASS.) CEMETERY	1714 & later			43 acres	District
NW	Old Burying Ground (NW section)	1714			5 acres	Site C
N	First expansion (middle section)	1861				Site C
NE	Second expansion (east section)	c. 1920				Site C
NE	Third expansion (east section)	1942				Site C
S	Fourth expansion (south section)	1952				Site C
	ARCHITECTURAL ELEMENTS					
N	North Wall	1855		Fieldstone and granite		Struc. C
NW	West Wall	1855		Fieldstone		Struc. C
NW	Entrance Gate	1873		Granite & iron		Struc. C
NW	Town Vault	1861		Granite & iron	built into knoll	Struc. C
S	Maintenance Shed	1975		Wood		Bldg. NC
	LANDSCAPE ELEMENTS					
	Terrace & retaining walls	c. 1860		Dirt and stone		Struc. C
	Roadways	1920 & later		Dirt, gravel, asphalt		Struc. C
	Pathways	1861 & later		Grass & dirt		Struc. C
	SCULPTURAL ELEMENTS					
N	Civil War Memorial	1890		Zinc		Obj. C
N	Memorial Bench: Meth. Episc. Church	c. 1900		Marble		Obj. C
	GRAVESTONES & MARKERS					
N1	Abner Wolcott	1867		marble tablet (flat in ground)	Civil War veteran	Obj. C
N2	Daniel E. Adams	1888		granite obelisk		Obj. C
N3	Fales & Crosby	1899		granite obelisk	Family plot - 14 markers	Site C
N4	Edwin Rice	1897		marble column w/ garland, urn & bird	Family plot - 1 marker	Site C
N5	Willie Phipps Vizard	1873		marble tree cross & vine		Obj. C
N6	Butterworth	1882		granite posts	Family plot	Site C
N7	James K. Sargeant	1862		white bronze plinth	Civil War - at Antietam ae 19	Obj. C
N8	Zebediah Allen	1839		sandstone obelisk	Family plot - 24 markers	Site C
N9	Freedom N. Upham	1902		marble tablet		Obj. C
N10	Albert C. Blanchard	1871		marble plinth & urn	Family plot - 13 markers	Site C

BROOKFIELD CEMETERY

Brookfield

Worcester County, Massachusetts

DATA SHEET

N11	Jonas Allen	1885		granite plinth & border		Obj.	C
N12	Deacon Eleazer W. Estey	1906		polished granite ball on plinth		Obj.	C
N13	Esperience Hastings	1789		slate / effigy & vines		Obj.	C
N14	Zebediah Allen	1882		red granite obelisk	Family plot - 4 markers	Site	C
N15a	Colonel Seth Banister	1819		slate tablet	Rev. War veteran	Obj.	C
N15b	Major Liberty Banister	1849		marble tablet	Family plot - 11 markers	Site	C
N16	Daniel Hale	1867		marble obelisk	Family plot - 2 markers	Site	C
N17	Flanders & Barrows	1897		pink granite plinth & urn	Family plot	Site	C
N18	Cooley & Blanchard	1815		marble tablets	Family plot - 7 markers	Site	C
N19	Jason Walker	1843		marble tablet	Rev. War veteran	Obj.	C
N20	James Sherman	1888		marble plinth	Family plot - 2 markers	Site	C
N21	Caleb Marsh	1814		marble tablet	Family plot - 3 markers	Site	C
N22	Samuel Bemis	1869		granite plinth & curb	Family plot	Site	C
N23	Pliny Merrick	1814		sandstone block	Eminent lawyer, Harvard grad.	Obj.	C
N24	Henry L. Mellen	1881	Monu. Bronze Co.	white bronze obelisk		Obj.	C
N25	C. Fales	1866		granite obelisk	Family plot - 4 markers	Site	C
N26	Tilly Rice	1824		sandstone block	Mounded tomb	Obj.	C
N27	Town lot	n.d.		none visible	adjacent to wetland	Site	C
NW1	Corp. Henry W. Watson	1864		marble tablet	Civil War - at Richmond ae 19	Obj.	C
NW2	Lydia Kimball	1874		marble obelisk	Family plot - 2 markers	Site	C
NW3	George Clapp	1861		marble obelisk	Family plot	Site	C
NW4	John Robinson	1840		marble obelisk	Family plot - 3 markers	Site	C
NW5	Aaron Kimball	1866		marble obelisk	Family plot - 9 markers	Site	C
NW6	Emmons Twichell	1891		sandstone obelisk	Family plot - 22 markers	Site	C
NW7	Town Vault	1861		granite & iron	Built into knoll	Struc.	C
NW8	Abel Wheeler Reed	1872		marble plinth	Family plot - 3 markers	Site	C
NW9	Rev. Nathan Fiske	1799		slate / urn and vines		Obj.	C
NW10	Joshua Spooner	1778		marble tablet	Murder victim	Obj.	C
NW11	Rev. Jabez Upham	1760		slate table stone		Obj.	C
NW12	Dr. Thomas Weld	1756		slate tablet	Crown Point expedition	Obj.	C
NW13	Hannah Ayres	1748		slate / effigy & geom.		Obj.	C
NW14	Rev. Thomas Cheney	1747		slate / winged skull		Obj.	C
NW15	Ensign Robert Cutler	1761	William Young	slate / effigy & birds	pub: Forbes, Ludwig	Obj.	C
NW16	Capt. Thomas Buckminster	1765		sandstone / winged & crowned effigy		Obj.	C
NW17	Mrs. Martha Cooley	1768		sandstone / winged effigy	Broken stone	Obj.	C
NW18	Gilmore	1862		granite obelisk	Family plot	Site	C
NW19	Hayden & Banister	1872		granite plinth & curb	Family plot	Site	C

BROOKFIELD CEMETERY

Brookfield

Worcester County, Massachusetts

DATA SHEET

		1740	William Young	slate / effigy	pub: Forbes	Obj.	C
NW33	Joseph Ayres ae 85	1740	William Young	slate / effigy & vines	pub: Forbes	Obj.	C
NW34	Joshua Nichols ae 63	1759	William Young	slate / winged effigy	pub: Chase & Gabel	Obj.	C
NW35	Mary Cheney ae 34	1764	Ebenezer Howard	marble / winged effigy	Farber coll.	Obj.	C
NW36	Capt. Thomas Gilbert	1793		slate / effigy & crossbones	Farber coll.	Obj.	C
NW37	Capt. William Old	1749		slate / winged skull & vines	Smallpox victim	Obj.	C
NW38	Margaret Bromfield	1761					
	SUMMARY			CONTRIBUTING	NON-CONTRIBUTING		TOTAL
	Buildings			0	1	1	1
	Sites			38	0	38	38
	Structures			8	0	8	8
	Objects			59	0	59	59
	TOTAL RESOURCE COUNT			105	1		106

